



## Rowallan Road, SW6

£2,850 Per calendar month

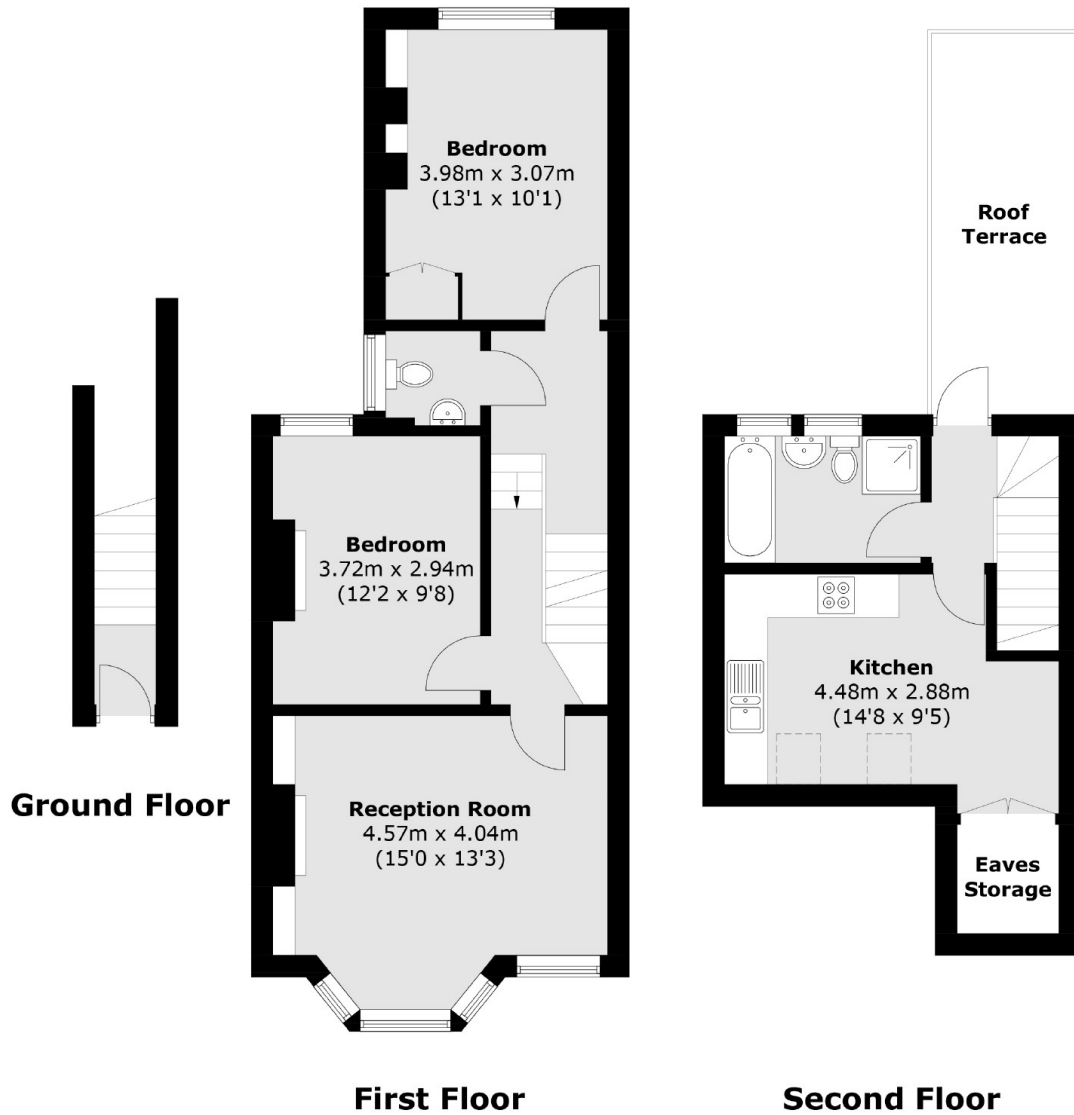
This split-level, two double bedroom apartment arranged over the first and second floors of a Victorian period conversion is ideally situated in Munster Village, close to all local amenities and transport links. The property benefits from a large reception room, eat in kitchen and private terrace.

Rowallan Road is located off Munster Road with many bus routes leading into the city. The closest underground stations are Parsons Green and Putney Bridge. Bishops Park is also close by and a range a local amenities.

### Features

- Two Double Bedrooms
- Eat In Kitchen
- Large Reception
- Spacious
- Split Level
- Private Terrace

# Rowallan Road, Fulham, SW6



Total area (approx.): 76.5 sq. m (823.3 sq. ft)  
(Excluding Eaves Storage)

Roof Terrace area: 10.5 sq. m (113.0 sq. ft)