

Apartment 24, offers in the region of £300,000

RICHMOND
VILLAGES

Part of Bupa

(Other charges apply)



2



2



EPC - C



2 bedroom ground floor apartment

We are delighted to offer for resale this charming two-bedroom apartment featuring delightful views across the Courtyard gardens. The property is perfectly situated within easy access of our on-site facilities, including the Garden Room Restaurant & Reception.

Specification

- Light and airy living room, with French doors to a private South-facing patio
- The modern kitchen adjoins the living space via a double-glazed door and features a range of eye and base level units with worktops and glass splashback behind the two-ring hob
- Large main bedroom, with fitted wardrobes
- Shower room with walk-in shower
- A well proportioned, second single bedroom
- Central heating radiators in all rooms
- Well stocked flower borders and lawns maintained by the Village Gardeners
- Allocated parking space for one car, where applicable

Important Notice: These particulars are intended to give a fair and substantially correct overall description. Other fees and charges apply, please contact the Village Advisers for further details. Properties are sold on a 125 year lease and this property has 106 years remaining.

01270 629 080

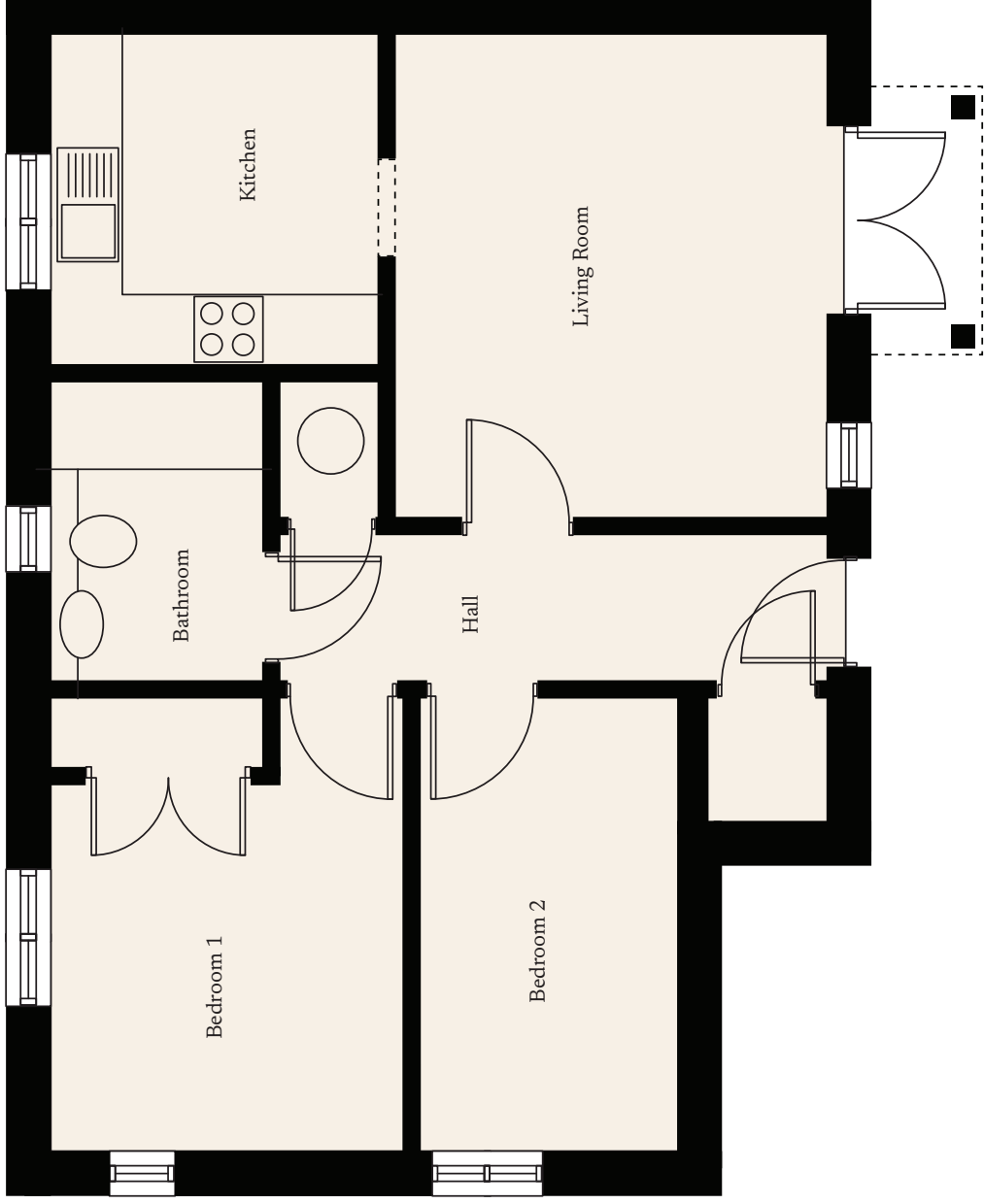
nantwich@richmond-villages.com

Richmond Villages Nantwich,
St Joseph's Way, Nantwich, Cheshire CW5 6LZ

Apartment 24

Ground Floor | 567ft²

Kitchen	2692 x 2641mm
	8'10" x 8'8"
Living Room	3886 x 3505mm
	12'9" x 11'6"
Bedroom 1	2972 x 2845mm
	9'9" x 9'4"
Bathroom	2388 x 1753mm
	7'10" x 5'9"
Bedroom 2	3658 x 2083mm
	12' x 6'10"



These particulars are intended to give a fair and substantially correct overall description.

Measurements have been taken at 1500mm ceiling height.

All dimensions are approximate. Bedroom measurements include the wardrobe if applicable. Room measurements include bay windows if applicable.

Furniture layout is to give an indicative impression. Although all efforts have been made to ensure its accuracy at time of print dimensions, fixtures, fittings, finishes and specifications are subject to change without notice.

The properties are sold unfurnished.

