



Guide Price

£475,000

Freehold

4x  3x  3x 

**Old Kent Road, Paddock
Wood, Tonbridge, Kent,
TN12**

Wards
Helping you move forwards



Main features

- Semi detached property close to local amenities and station with links into London
- Great opportunity to own a gorgeous home with large garden
- Parking and double garage
- Conservatory opening up onto rear garden

Accommodation

GROUND FLOOR

- Entrance Hall
- Lounge: 15'1 x 12'0 (4.60m x 3.66m)
- Dining Room: 13'0 x 10'9 (3.97m x 3.28m)
- Kitchen: 12'4 x 10'5 (3.76m x 3.18m)
- Conservatory: 19'5 x 9'5 (5.92m x 2.87m)
- Shower Room: 11'8 x 4'4 (3.56m x 1.32m)

FIRST FLOOR

- Landing
- Bedroom 2: 13'0 x 9'8 (3.97m x 2.95m)
- Bedroom 3: 13'0 x 11'0 (3.97m x 3.36m)
- Bedroom 4: 6'9 x 6'9 (2.06m x 2.06m)
- Bathroom: 8'5 x 6'9 (2.57m x 2.06m)

SECOND FLOOR

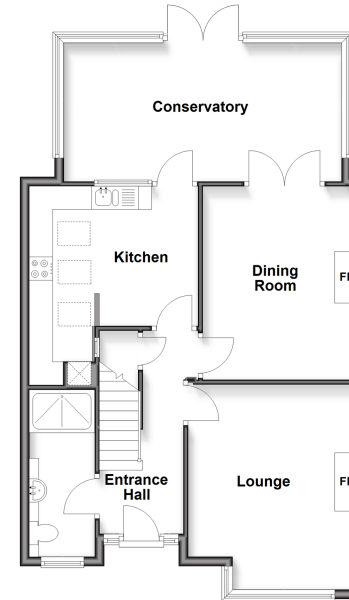
- Bedroom 1: 21'6 x 13'9 (6.56m x 4.19m)
- En suite Bedroom 1: 7'1 x 4'1 (2.16m x 1.25m)

OUTSIDE

- Double Garage
- Off Road Parking
- Rear Garden

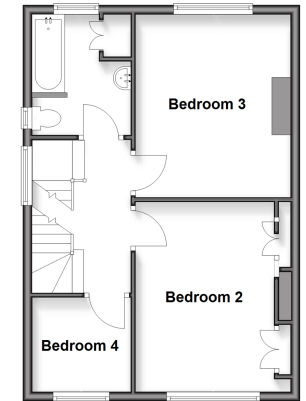
Ground Floor

Approx. 75.2 sq. metres (809.4 sq. feet)



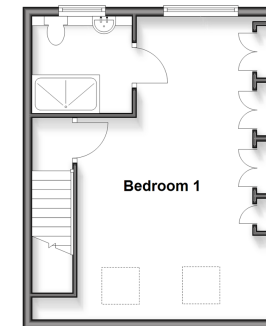
First Floor

Approx. 44.9 sq. metres (483.2 sq. feet)



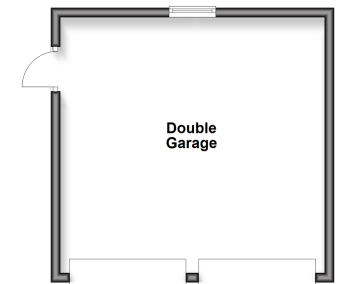
Second Floor

Approx. 34.0 sq. metres (365.9 sq. feet)



Outbuilding

Approx. 31.1 sq. metres (334.6 sq. feet)



Call Paddock Wood - 01892 836877 ■ wardsof Kent.co.uk

- Legal advice should be taken to verify fixtures/fittings, planning, alterations and/or lease details
- Appliances & services are untested, dimensions are approximate and floor plans are not to scale



13627528/20260226/RW/WA