



19 MILLERS CLOSE

GORING ON THAMES ♦ OXFORDSHIRE

19 MILLERS CLOSE

GORING ON THAMES ♦ OXFORDSHIRE

Goring Railway Station (London Paddington within the hour)

Streatley High Street / River 0.25 miles ♦ Reading 10 miles

(London Paddington 27 minutes) ♦ M4 (Junction 12) 10 miles ♦

Henley on Thames 13 miles ♦ Newbury 14 miles ♦ Oxford 17 miles

(Distances and times approximate)

A well-presented semi-detached property with 3 bedrooms in central village location within walking distance of shops and mainline station, with commuter trains into Reading, Oxford and London Paddington.

- ♦ Within a 10 Minute Walk From Train Station
- ♦ Goring Primary & Langtree School Catchment
- ♦ Riverside Walks & Amenities Close Walking Distance

♦ Entrance Hall with Cloakroom

♦ Lounge/Dining Room

♦ Kitchen with access to Patio Garden

♦ 2 Double Bedrooms with built-in wardrobes

♦ 1 Single Bedroom

♦ Bathroom with Bath and Overhead Shower

♦ Single Garage Plus Parking For 1 Car

♦ Rear Patio Garden



SITUATION

Goring-on-Thames lies serenely in the beautiful Thames Valley, set between the Chiltern Hills in Oxfordshire and the Berkshire Downslands opposite above the village of Streatley. The area is known geographically as the 'Goring Gap' and is designated an 'Area of Outstanding Natural Beauty'. Goring was awarded the prestigious 'Oxfordshire Village of the Year' and also the 'Britain in Bloom' competition several times including 2022. Local amenities include a primary school, an excellent range of interesting shops and restaurants, together with a riverside café, a gastropub with rooms, a lovely traditional pub, a full NHS practice, veterinary practice, dentist and library. The village hosts numerous popular and well attended annual events.

Importantly, a mainline railway station provides fast commuter services to London Paddington in 45 minutes. The central village 'Conservation Area' has a wealth of architecturally interesting properties, many listed and dating from around the 16th Century. Historically, Goring-on-Thames traces back to Saxon times. Streatley-on-Thames, on the Berkshire side of the river, is another picturesque village surrounded by hills and woodlands, now mainly owned by the National Trust. Fronting onto the river by the bridge crossing over to Goring-on-Thames is The Swan at Streatley, a luxury 4-star riverside hotel with adjoining Coppa Club, riverside Lobster Bar and gym.

The area is also extremely well served by an excellent range of state and private schooling, which includes not only the ever popular Goring-on-Thames Primary School and Langtree Secondary School in Woodcote, but also Cranford School, Moulisford Preparatory School, The Oratory Preparatory & The Oratory School, St Andrews Preparatory School, Pangbourne College,

Brockhurst & Marlston House, Downe House, Rupert House School, Shiplake College, The Abbey School, Bradfield College, The Manor Preparatory School, Abingdon School, Abingdon Preparatory School, Radley College and St Helen & St Katharine.

Elizabeth Line services commenced from Reading in 2022, which together with the completed electrification of the GWR line, has significantly improved travelling times to central London and the City, Heathrow and as far east as Essex.

PROPERTY DESCRIPTION

19 Millers Close is located in a quiet cul de sac, within close walking distance of all village amenities. Offering 3 bedroom accommodation, incorporating Georgian period style architectural features to the exterior, internally the property is well presented. To the ground floor is the entrance hall with cloakroom and sitting dining room all with wood flooring. The kitchen is fully fitted and has a back door for direct access onto the patio.

Upstairs are two double bedrooms with fitted wardrobes and a further single bedroom, all leading off the central landing along with the family bathroom with bath and overhead shower.

OUTSIDE

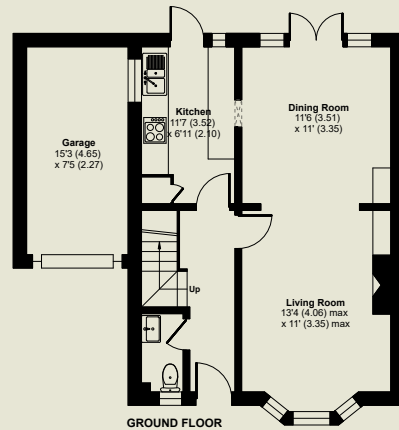
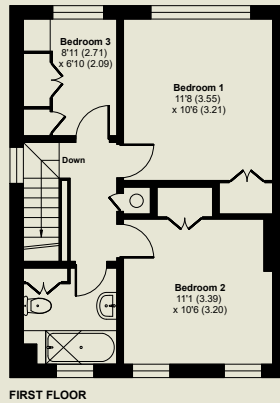
Across the main frontage to the property, there is a pretty border leading up to the front door and entrance to the property. The garage is attached and there is parking directly in front. At the rear of the property is an attractive courtyard garden with hedged borders. There is a side gate providing access from front to rear.



Millers Close, Goring, Reading, RG8

Approximate Area = 934 sq ft / 86.7 sq m
Garage = 114 sq ft / 10.5 sq m
Total = 1048 sq ft / 97.2 sq m

For identification only - Not to scale



Floor plan produced in accordance with RICS Property Measurement 2nd Edition, incorporating International Property Measurement Standards (IPMS2 Residential). © nphocom 2026. Produced for Warmingham Limited. REF: 1447102



GENERAL INFORMATION

Services: All mains services are connected to the property. Central heating and hot water from gas fired boiler.

Council Tax: D

Energy Performance Rating: D / 68

Postcode: RG8 9BS

Local Authority: South Oxfordshire District Council

VIEWING

Strictly by appointment through Warmingham & Co.

DIRECTIONS

From our offices in the centre of Goring, turn right and proceed up the High Street where immediately past the shops turn left into Cleeve Road. Continue straight over at the junction with Glebe Ride and the entrance into Millers Close will be found further along on the left hand side. Turn into Millers Close and number 19 will be found a short way along on the right hand side.

DISCLAIMER

The agent has not tested any apparatus, equipment, fittings or services so cannot verify that they are in working order. If required, the client is advised to obtain verification. These particulars are issued on the understanding that all negotiations are conducted through Warmingham & Co. Whilst all due care is taken in the preparation of these particulars, no responsibility for their accuracy is accepted, nor do they form part of any offer or contract. Intending clients must satisfy themselves by inspection or otherwise as to their accuracy prior to signing a contract.



Warmingham
www.warmingham.com

01491 874144

4/5 High Street, Goring-on Thames
Nr Reading RG8 9AT

E: sales@warmingham.com

www.warmingham.com