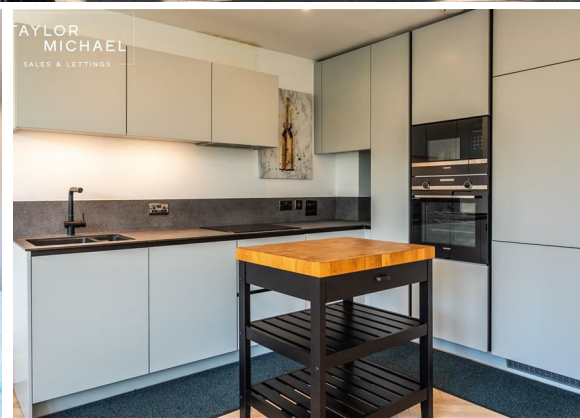




2 Bed  
Apartment  
located in

£2,400 Per month



TAYLOR  
MICHAEL  
STUDENTS

# Rox, Gloucester Place, Brighton, BN1 4AA

Approximate Gross Internal Area = 72.6 sq m / 781 sq ft



**Fourth Floor**

Illustration for identification purposes only, measurements are approximate, not to scale.  
Imageplansurveys @ 2026

Energy Efficiency Rating		
	Current	Potential
Very energy efficient - lower running costs		
(92 plus) <b>A</b>		
(81-91) <b>B</b>	85	85
(69-80) <b>C</b>		
(55-68) <b>D</b>		
(39-54) <b>E</b>		
(21-38) <b>F</b>		
(1-20) <b>G</b>		
Not energy efficient - higher running costs		
England & Wales	EU Directive 2002/91/EC	

## DIRECTIONS

## CONTACT

62 Church Road  
Hove  
East Sussex  
BN3 2FP

E: [lettings@taylormichael.agency](mailto:lettings@taylormichael.agency)  
T:  
<https://taylormichael.agency/>

**TAYLOR  
MICHAEL**  
STUDENTS