



Ashleigh Road

Mortlake, SW14

£3,500 per month
(£807.69 per week)

A well-presented and spacious home offering comfortable living in a popular residential area. The property has a bright reception room with good natural light, creating a welcoming space to relax or entertain.

The kitchen is modern and practical, with good storage and workspace, and connects well to a dining area. The bedrooms are a good size and provide a quiet place to unwind, with a family bathroom finished in a modern style. The property also benefits from useful storage and a private garden.

Ashleigh Road is in East Sheen, close to local shops, cafes, and everyday amenities. Richmond Park is nearby for open space, and Mortlake station provides direct trains into central London.

CHESTERTONS



Ashleigh Road

London, SW14

- Three Bedrooms
- Two Bathrooms
- Private Garden
- Permit Parking Available



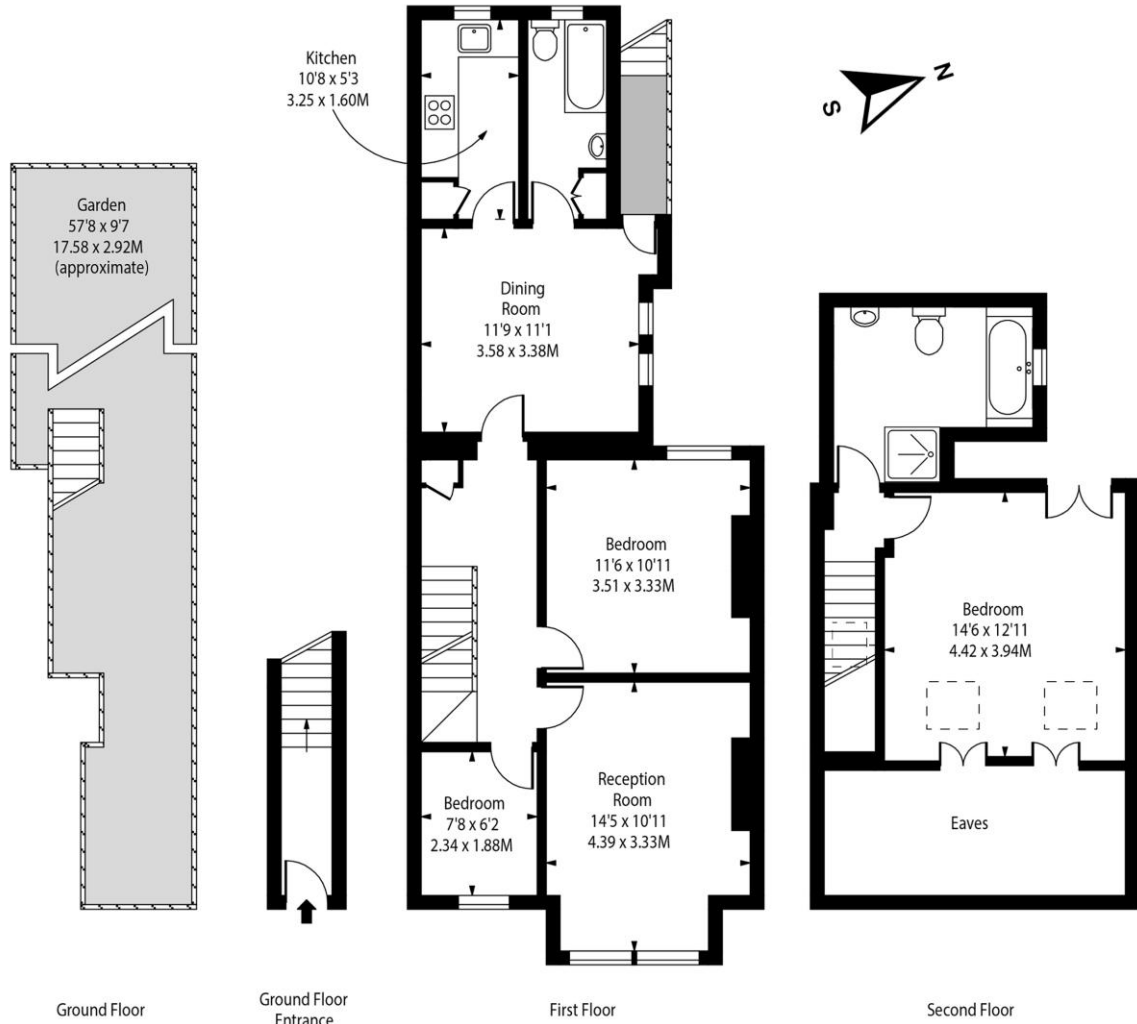
Minimum Term: 12 months
Deposit Required: £4,038.46
Local Authority: London Borough of Richmond upon Thames
Council Tax Band: D
EPC Rating: D
Part Furnished

Chestertons East Sheen Lettings

254a Upper Richmond Road West
East Sheen
London
SW14 8AG
sheenlettingsusers@chestertons.co.uk
02081040580
chestertons.co.uk

Additional tenant charges apply (fees apply to non-AST tenancies only)
Tenancy Agreement Fee: £300
References per Tenant/Guarantor: £60
Inventory check (approx. £100 – £250 inc. VAT)
chestertons.co.uk/property-to-rent/applicable-fees

Ashleigh Road, SW14



Approx Gross Internal Area 1182 Sq Ft - 109.81 Sq M

Includes Limited Use Area and Eaves Storage - 134 Sq Ft
 Drawn in Accordance with IPMS 3B: Residential
 Illustration For Identification Purposes Only - Not to Scale
www.homespacestudio.co.uk - Ref. No. 54391

