



2 Rooks End, Grove, Oxon, OX12 7FD

£1,850 PCM - 14th August 2026

- Immaculately presented, 3 bedroom, semi detached house
- Gas central heating
- Within easy distance of Wantage town centre, Milton Park and Harwell campus
- EPC Rating B. Council tax Band C
- Enclosed, west facing garden and door to single garage.

2 Rooks End, Grove OX12 7FD

Immaculately presented, 3 bedroom, semi detached house located within easy distance of Wantage town centre, Milton Park and Harwell campus. Fully fitted kitchen/dining room with gas hob, electric oven, fridge/freezer, and dishwasher. 2 double bedrooms, fitted wardrobe and en-suite shower to bedroom one, single bedroom. Family bathroom with shower over bath. Enclosed, west facing garden and door to single garage. All UPVC, gas central heating. Pets considered. EPC Rating B. Council tax Band C

The Ofcom Broadband Checker states there is:

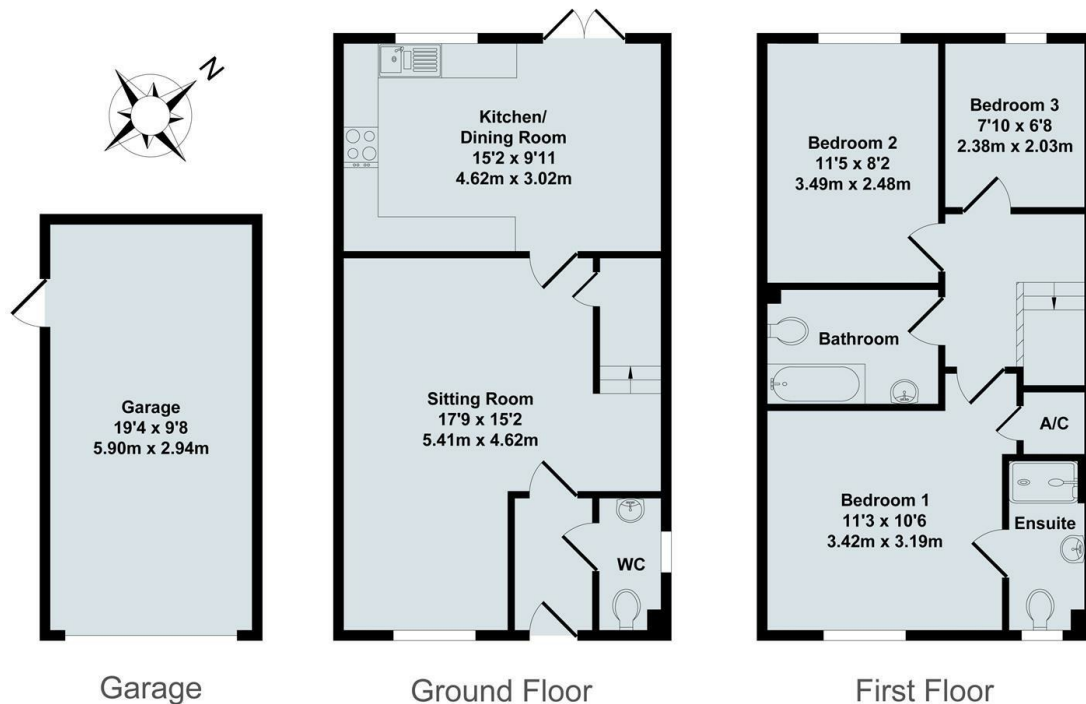
Ultrafast broadband has download speeds of greater than 300Mbps

When an application is agreed a holding deposit will be required of a maximum of one weeks rent



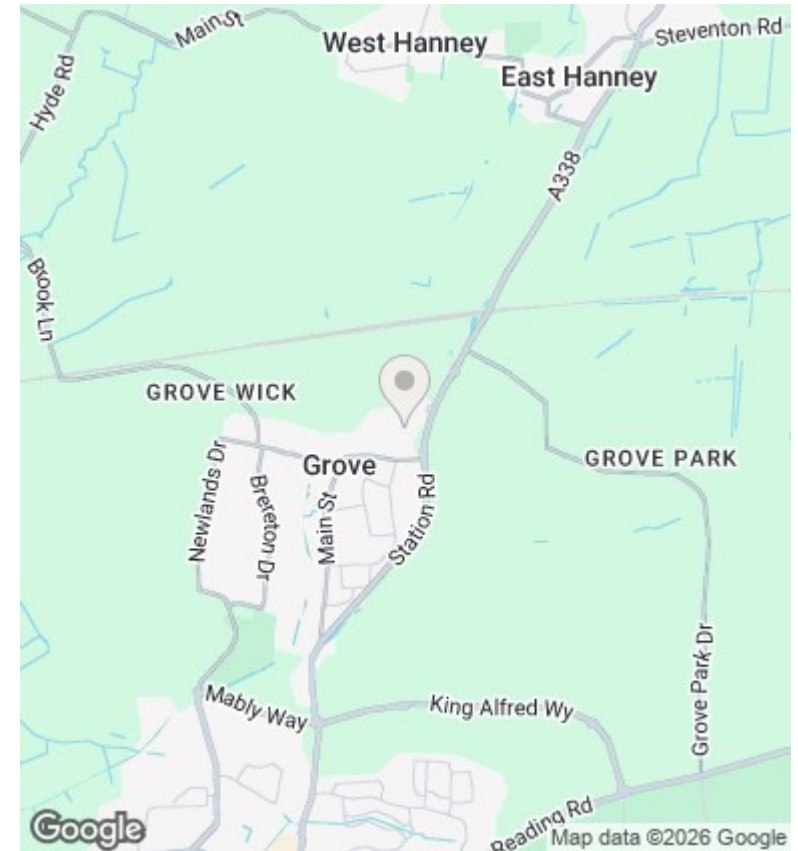
Council Tax Band: C





Total Approx. Floor Area 1035 Sq.Ft. (96.20 Sq.M.)

All items illustrated on this plan are included in the "Total Approx Floor Area"



Directions

Viewings

Viewings by arrangement only. Call 01235 773999 to make an appointment.

Council Tax Band

C

Energy Efficiency Rating		
	Current	Potential
Very energy efficient - lower running costs		
(92 plus) A		
(81-91) B	84	
(69-80) C		
(55-68) D		
(39-54) E		
(21-38) F		
(1-20) G		
Not energy efficient - higher running costs		
England & Wales	EU Directive 2002/91/EC	