

Location:

Ashfield Road is a quiet residential road located close to the amenities of Acton and Shepherd's Bush. Both Acton Central and Acton Main Line stations are close by for links to and from central London.

Key points:

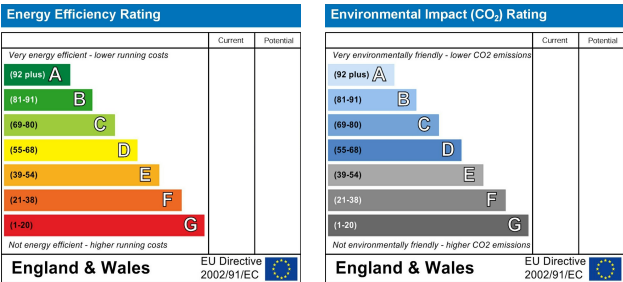
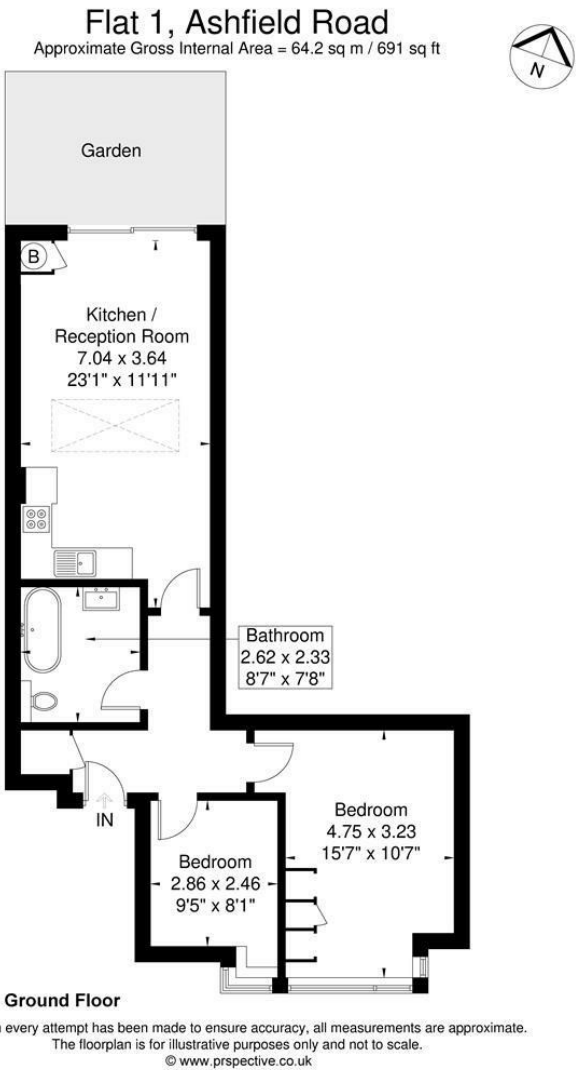
- 2 Bedrooms
- Luxury apartment
- Underfloor heating
- Private landscaped garden
- Italian designed kitchen
- Share of freehold
- Bespoke joinery
- Siemens appliances
- 10 year ICW warranty

Do Better:

Acton
sales@astonrowe.co.uk

57-59 Churchfield Road,
Acton, London, W3 6AY

020 8992 3600



Asking Price £580,000

Ashfield Road, London W3 7JJ

- 1 Reception Rooms
- 2 Bedrooms
- 1 Bathrooms



An exceptional two-bedroom, one-bathroom apartment located on the quiet and desirable Ashfield Road. This beautifully presented home offers a perfect blend of modern design and refined luxury, thoughtfully crafted with high-quality bespoke finishes throughout.

The apartment features a bright and spacious open-plan kitchen, living, and dining area, filled with natural light. Herringbone flooring adds elegance underfoot, while the Italian-designed kitchen is complete with sleek quartz worktops and premium Siemens appliances, creating a stylish and functional living space. Floor-to-ceiling bi-fold doors open onto the landscaped garden, seamlessly extending the living area outdoors. The home also benefits from underfloor heating throughout.

The principal bedroom includes fitted wardrobes, elegant panelled walls, and a sleek bathroom finished to a high standard with contemporary fittings and a clean, minimalist aesthetic. The second bedroom is a well-proportioned double, perfect for guests, family, or home office use.

Additional features include bespoke TV joinery units, built-in hallway storage, and handcrafted tiling that adds character to the entrance. High ceilings and well-planned storage throughout enhance the overall sense of space and comfort.

Ashfield Road is a peaceful residential street ideally located near the wide variety of shops, cafés, and amenities in both Acton and Shepherd's Bush. Acton Central and Acton Main Line stations are within easy reach, offering fast and convenient links to central London.

The current owner says:

The apartment benefits from share of freehold, fantastic storage throughout and a 10 year ICW buildings warranty.

What's better:

A luxury 2 bedroom, 1 bathroom garden apartment.

