

**Saltoun Road, Brixton, SW2**

2 bedroom flat - conversion to let

**£461 Per Week**

Furnished

## Property Details

A charming two double bedroom flat set on a beautiful Victorian terraced street in the heart of Brixton. The property features a spacious open-plan living and kitchen area, complete with stunning bay windows and an elegant feature fireplace, creating a bright and inviting space ideal for both relaxing and entertaining. Both double bedrooms are positioned towards the rear of the property, offering generous proportions, plenty of natural light, and a peaceful setting. Ideally located just a short walk from the vibrant Brixton High Street and under seven minutes from Brixton Underground station, the flat also benefits from being moments from Brockwell Park. This home truly offers the best of both worlds lively city living with beautiful green space close by.

**Council tax band C**      **EPC rating D (66)**

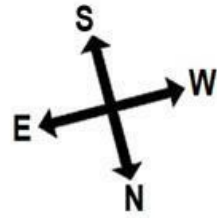
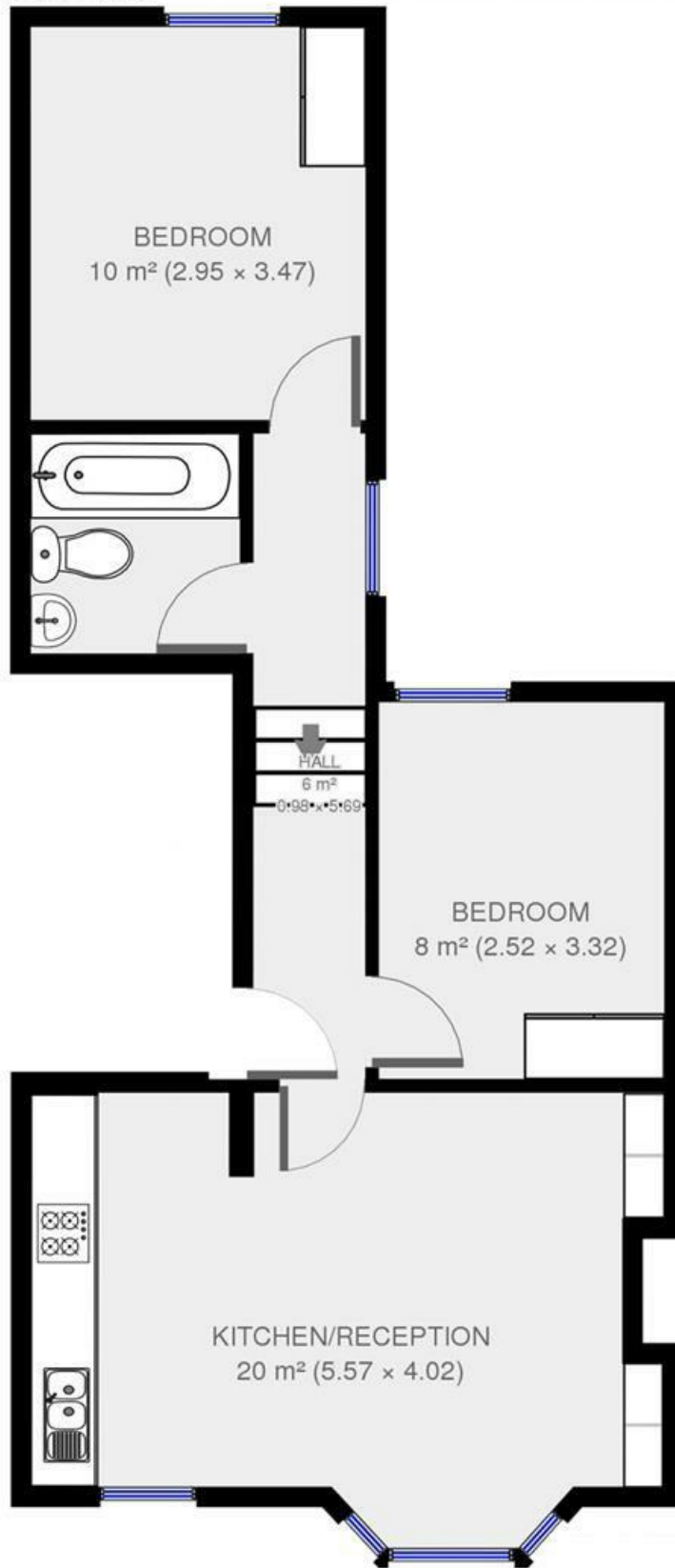
## Features

- Victorian
- Conversion Flat
- 2 Double Bedrooms
- Under a five minute walk to Brixton Underground
- Open plan kitchen / reception
- Within walking distance to Brockwell Park
- Light and airy throughout



Saltoun Road, Brixton, SW2

First Floor



2 bed flat.  
Approx internal area:

538 sqft 50 sqm

While we do try our very best, floor plans are produced as a guide only and we take no responsibility for the precise accuracy with which any property is represented

Saltoun Road

Saltoun Road, Brixton, SW2

