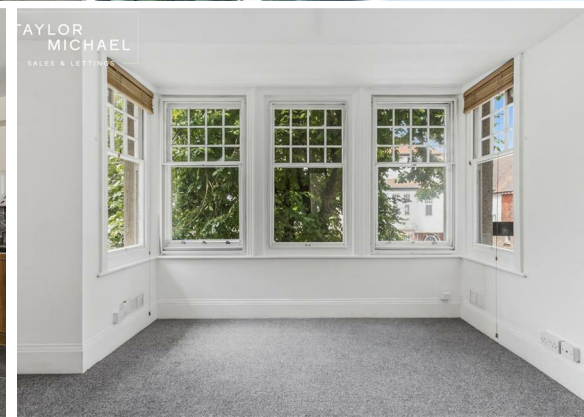




1 Bed
Studio
located in

£950 Per month



TAYLOR
MICHAEL

York Avenue, Hove, BN3 1FH

Approximate Gross Internal Area = 31.7 sq m / 341 sq ft

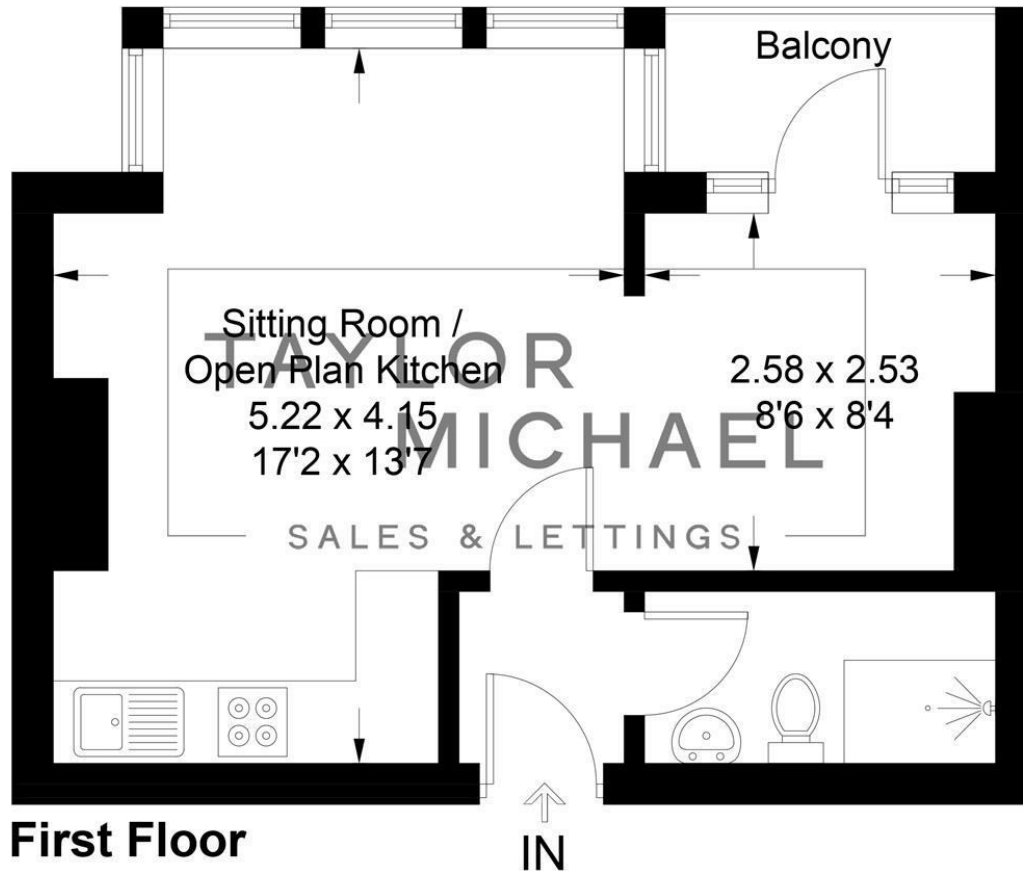


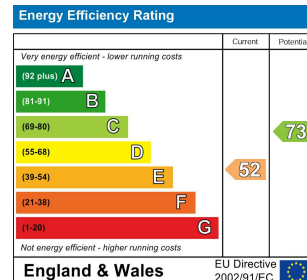
Illustration for identification purposes only, measurements are approximate, not to scale.
Imageplansurveys @ 2026

DIRECTIONS

CONTACT

62 Church Road
Hove
East Sussex
BN3 2FP

E: lettings@taylormichael.agency
T: 01273 600100
<https://taylormichael.agency/>



**TAYLOR
MICHAEL**