



## Stockwell Green, SW9

£2,400 Per calendar month

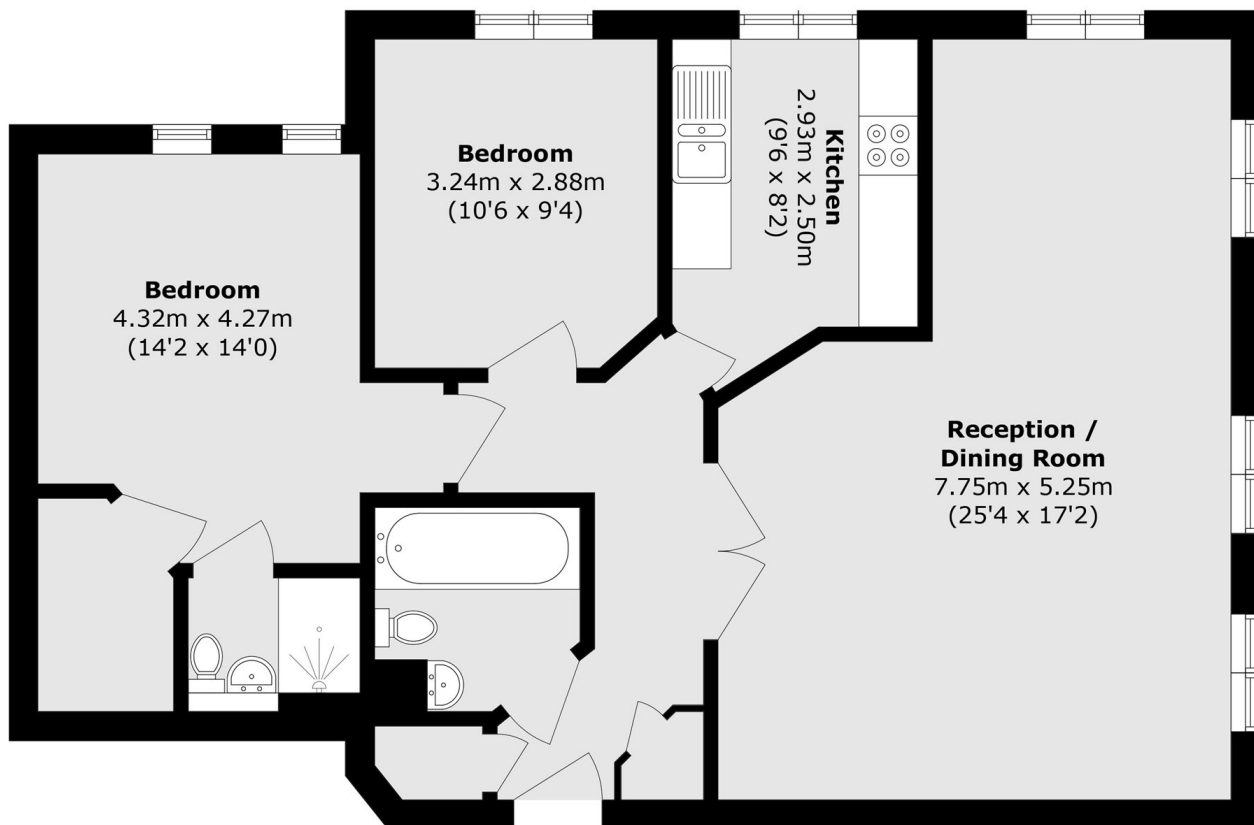
This modern two bedroom property comes with two bathrooms, a walk-in wardrobe, large reception room and modern kitchen. The property also offers private parking and the building's own gym.

Set within a private development in Stockwell. With Stockwell tube and Brixton Town Centre on your doorstep, the location is a dream for professional sharers.

### Features

- Two Double Bedrooms
- Gym In Building
- Two Bathrooms
- Large Reception Room
- Modern Kitchen
- Close To Transport

# Stockwell Green, London, SW9



Total area (approx.): 87.0 sq. m (936.5 sq. ft)