



CHICHELEY STREET, SE1

£800,000

This three bedroom apartment occupies the first floor of a purpose-built building, ideally situated just a stone's throw away from the Thames. With a generous layout and stunning views, this property benefits from access to a range of outstanding amenities, including a communal garden, a residents' gym, and a swimming pool.

- Offers In Excess
- Three Bedrooms
- 1,140 Square Foot
- Secure Underground Parking
- On-site Gym & Pool
- 24-Hour Concierge

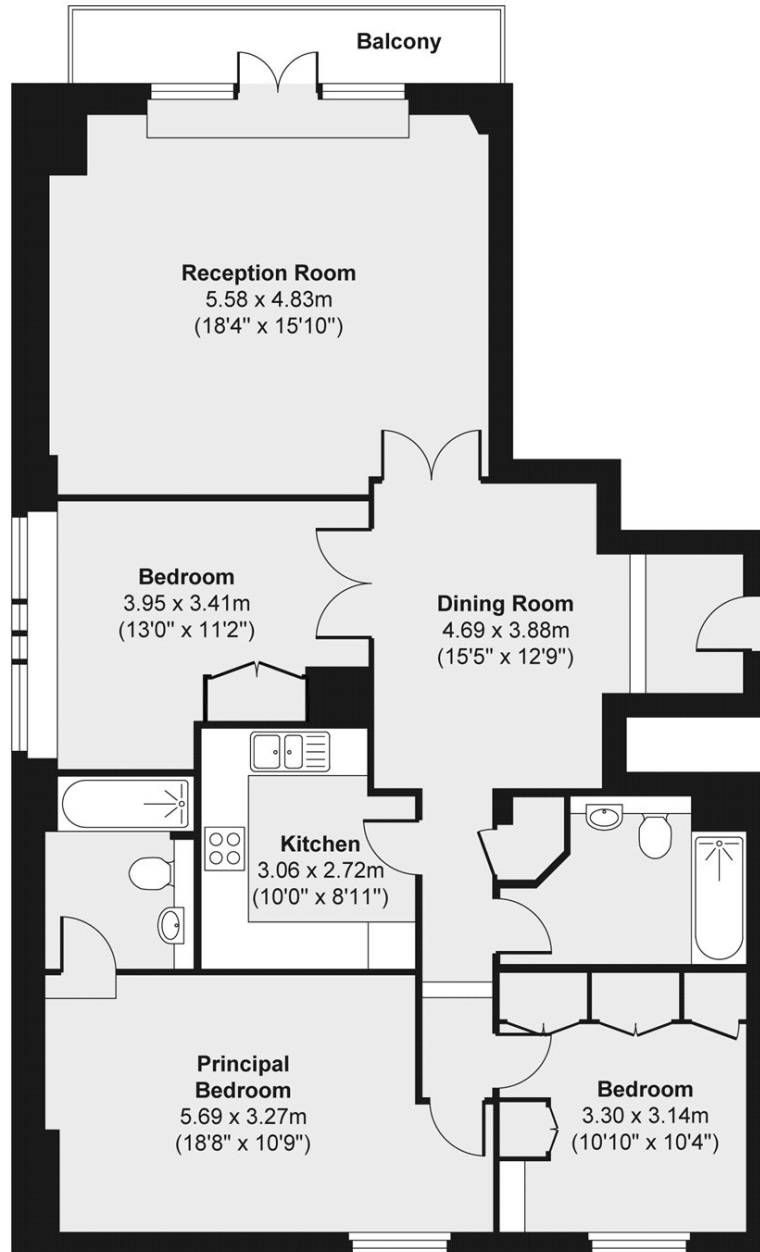


ABOUT THE HOME

Located, on the South Bank, tucked just back from the riverside and adjacent to Waterloo Satation, with incredible transport links across the city. Nearby are numerous attractions, restaurants and amenities.







Total area (approx.) 105.88 sq. m (1,140 sq. ft)
Balcony area (approx.) 5.10 sq. m (55 sq. ft)

LiFE RESIDENTIAL

252 Westminster Bridge
Road, London, SE1 7PD
Sales: 020 7476 0125
Lettings: 020 7620 1600

Energy Rating: D. We aim to make our particulars both accurate and reliable. However they are not guaranteed; nor do they form part of an offer or contract. If you require clarification on any points then please contact us, especially if you're traveling some distance to view. Please note that appliances and heating systems have not been tested and therefore no warranties can be given as to their good working order.