



**Thicket Mead, Midsomer Norton, BA3 2SL**

**£440,000**

- Three Bedrooms
- Views to The Rear
- Tenure - Freehold
- Modern Kitchen
- No Ongoing Chain
- Detached Bungalow
- Energy Rating - D
- Council Tax Band - D
- Driveway Parking for Several Vehicles
- Close to Local Amenities & Bus Routes

Situated in the popular area of Thicket Mead, Midsomer Norton, this delightful detached bungalow offers a perfect blend of comfort and convenience. With three well proportioned bedrooms, this property is ideal for families or those seeking a peaceful retreat.

The modern kitchen is a standout feature, providing a stylish and functional space for culinary enthusiasts. The spacious layout of the bungalow allows for a seamless flow between rooms, creating an inviting atmosphere for both relaxation and entertaining.

Accommodation comprises entrance hallway, sitting room, modern kitchen, two double bedrooms, spacious single bedroom and a family bathroom with bath and separate shower cubicle. Further benefits double glazing and gas central heating.

The property boasts a driveway, providing ample parking space, and an attractive garden that enhances the overall appeal. The garden not only offers a lovely outdoor space for gardening or leisure but also presents picturesque views, making it a perfect spot to unwind after a long day.

In summary, this charming bungalow in Midsomer Norton is a wonderful opportunity for those seeking a modern, spacious home in a desirable location. With its attractive features and convenient amenities, it is sure to appeal to a wide range of buyers.

Sitting Room 17'3 x 13' (5.26m x 3.96m)

Kitchen 12' x 11'10 (3.66m x 3.61m)

Bedroom One 13' x 11'10 (3.96m x 3.61m)

Bedroom Two 12' x 11'2 (3.66m x 3.40m)

Bedroom Three 11'10 6'7 (3.61m x 2.01m)

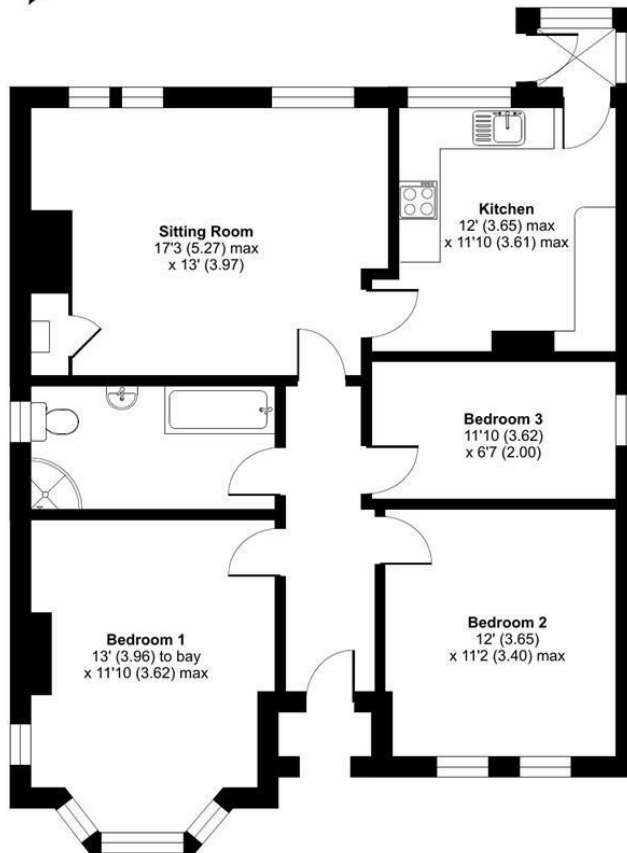
Bathroom





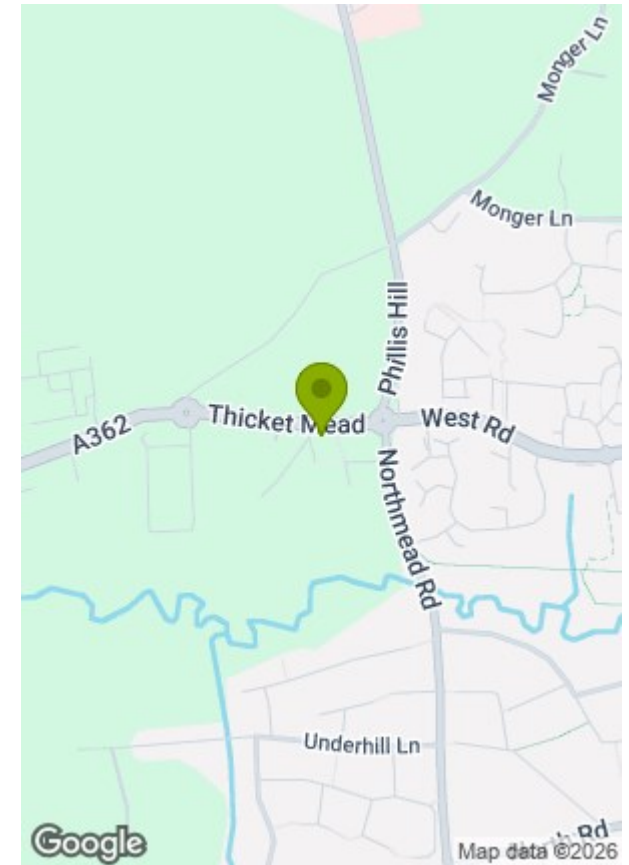
### Thicket Mead, Midsomer Norton, Radstock, BA3

Approximate Area = 915 sq ft / 85 sq m  
For identification only - Not to scale

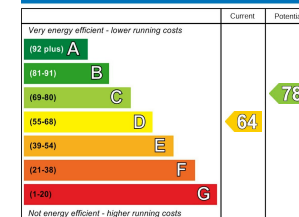


GROUND FLOOR

Floor plan produced in accordance with RICS Property Measurement Standards incorporating International Property Measurement Standards (IPMS2 Residential). © nichecom 2025. Produced for Barons Property Centre. REF: 1407649

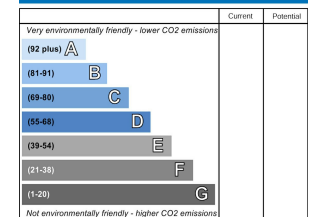


#### Energy Efficiency Rating



England & Wales EU Directive 2002/91/EC

#### Environmental Impact (CO<sub>2</sub>) Rating



England & Wales EU Directive 2002/91/EC

These particulars, whilst believed to be accurate are set out as a general outline only for guidance and do not constitute any part of an offer or contract. Intending purchasers should not rely on them as statements of representation of fact, but must satisfy themselves by inspection or otherwise as to their accuracy. No person in this firm's employment has the authority to make or give any representation or warranty in respect of the property.