

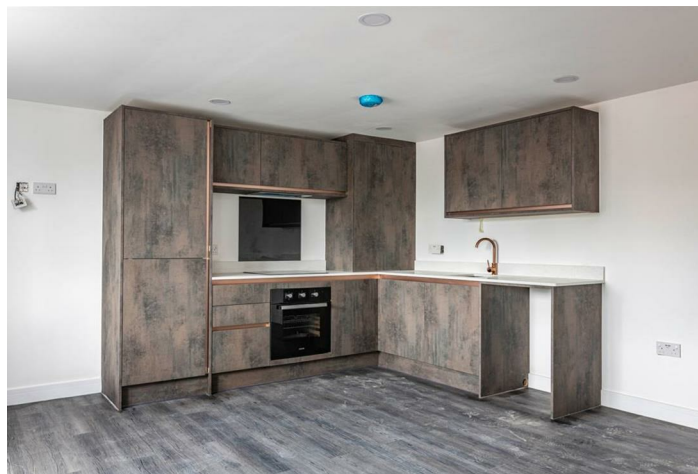
JOHNSONS & PARTNERS
Estate and Letting Agency



Ranmoor Road

Gedling, Nottingham, NG4 3FW

- Luxury Apartment
- Open Plan Living Area/ Kitchen
 - Parking Space
- Available Mid-August
- One Bed Apartment
- Contemporary Design
- Modern Throughout
 - First Floor



Local Authority
Council Tax Band A
EPC Rating B



Burton Joyce Office
111 Church Road, Burton Joyce,
Nottingham, NG14 5DJ

Contact
0115 855 66 22
lettings@johnsonsandpartners.co.uk
www.johnsonsandpartners.co.uk

Agents Note: Whilst every care has been taken to prepare these particulars, they are for guidance purposes only. All measurements are approximate and for general guidance purposes only and whilst every care has been taken to ensure accuracy, they should not be relied upon and potential buyers/tenants are advised to recheck the measurements.