

FLETCHERS

ESTATE AGENTS



Evershed Walk, W4

£1,500,000

A stunning ground floor two/three bedroom garden apartment in a prestigious gated development with concierge, underground parking, residents gym and a private west-facing garden.



The unique open-plan kitchen reception room is over 30 ft wide, with fantastic light coming in from floor to ceiling windows. There is a flexible office or second reception on the ground floor with garden access. The garden itself will get plenty of sun being west-facing orientation, and runs the full width of the property, making it perfect for entertaining. Upstairs there are two double bedrooms both with walk-in wardrobes, and these are accompanied by a luxurious shower suite and sauna.

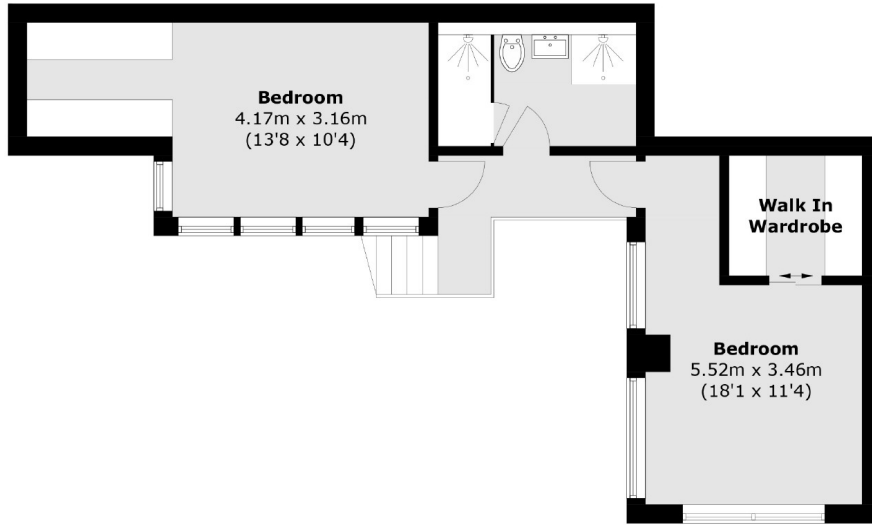
Chiswick Green Studios is a modern development within half a mile from Chiswick Park Station. There are plenty of independent shops, cafés and restaurants nearby at Turnham Green and Chiswick High Road.

- Three Bedrooms • Two Receptions • Floor/Ceiling Windows •
- Gated Development • Secure Underground Parking • West-Facing Garden •

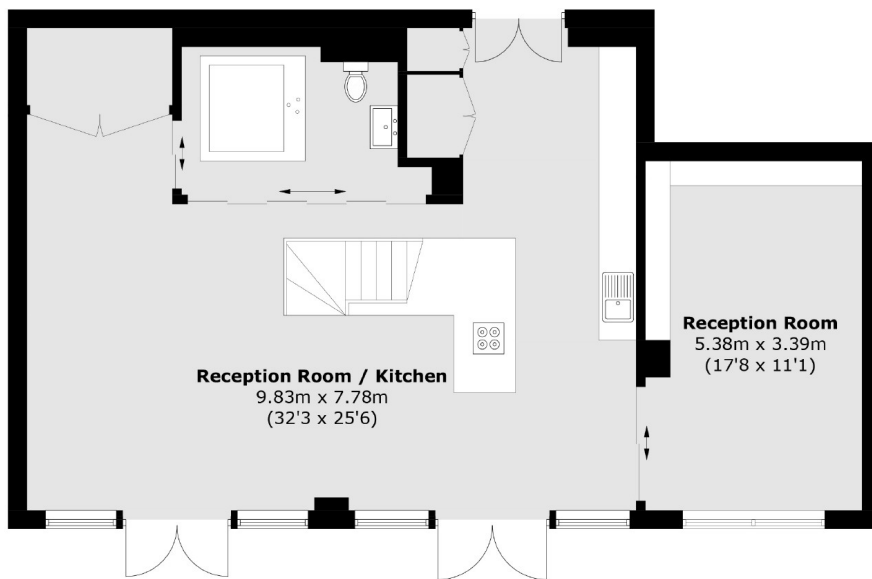


FLETCHERS

ESTATE AGENTS



First Floor



Ground Floor

Total area (approx.): 148.6 sq. m (1,599.5 sq. ft)

Fletchers Chiswick Turnham Green Sales
58 Turnham Green Terrace
London
W4 1QP
020 8987 3000
chiswicksales@fletcherestates.com

Energy Rating: C We aim to make our particulars both accurate and reliable. However they are not guaranteed; nor do they form part of an offer or contract. If you require clarification on any points then please contact us, especially if you're traveling some distance to view. Please note that appliances and heating systems have not been tested and therefore no warranties can be given as to their good working order