



Beehive Way, Bawdeswell, Dereham, NR20 4WH

welcome to

Beehive Way, Bawdeswell, Dereham

It is rare to find an A rated EPC property locally, but this modern detached house benefits from that and still has some NHBC cover. Accommodation including 3 bedrooms, 2 receptions rooms and is located in a popular village with amenities, gardens and garage.



Description

This modern detached village house still has the benefit of the NHBC cover and boasts an A rated EPC, indicating it is efficient to run with benefits including good insulation, air source heating (underfloor to downstairs), solar panels and triple glazing.

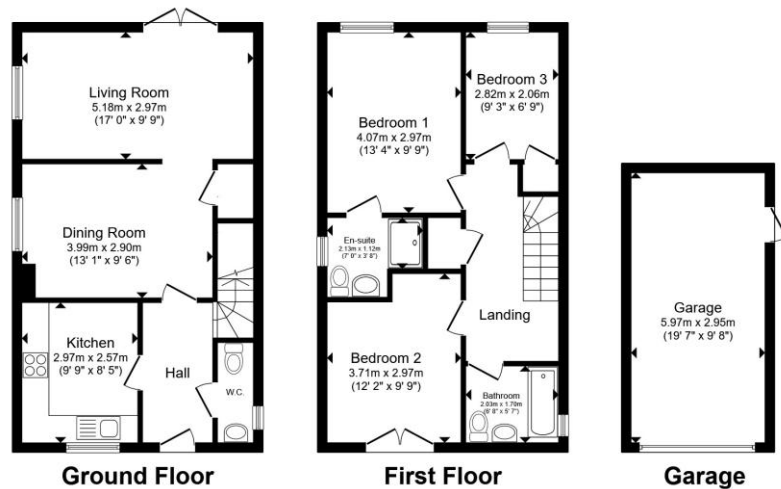
Excellent presentation, enclosed rear garden, open 'Green' outlook for front, driveway parking and garage.

Inside it offers 2 receptions with beam screen between dining and sitting spaces, 3 bedrooms with en-suite to main bedroom, family bathroom and ground floor cloakroom.

Situated in a small development within a village with a range of amenities including Morrison's local store, garden centre with cafe, first school and within catchment for the highly regarded high school and sixth form in the nearby historic market town of Reopham.

Canopy Entrance Porch

With entrance door to Hallway.



Total floor area 110.9 m² (1,193 sq.ft.) approx

This floor plan is for illustrative purposes only. It is not drawn to scale. Any measurements, floor areas (including any total floor area), openings and orientation are approximate. No details are guaranteed, they cannot be relied upon for any purpose and they do not form part of any agreement. No liability is taken for any error, omission or misstatement. A party must rely upon its own inspection(s). Powered by www.propertybox.io


william
h brown



view this property online williamhbrown.co.uk/Property/RPM103981



Hallway

Front door opens into hall with stairway leading off and natural wood doors opening to ground floor rooms.

Cloakroom

Suite comprising WC & wash basin, recess to wall with mirror & double glazed window.

Kitchen

Fitted range of base and wall units with work surfaces with tile surrounds and 1 1/2 bowl sink, range of appliances include electric hob with hood over, separate oven, dishwasher & fridge/freezer and space for washing machine. Recessed ceiling lights, concealed lighting, open outlook to the front and access on to Dining Room.

Dining Room

Side window, natural wood door to deep storage cupboard, stylish vertical beam screen to Lounge which opens off.

Lounge

Enjoying plenty of natural light and access out to the patio through double doors, a side window adds another aspect to the room.

First Floor Landing

Balustrade to stairwell and natural wood doors opening off, including cupboard with hot water cylinder.

Main Bedroom

Rear window overlooking garden and door to En-suite.

En-Suite

Part-tiled suite comprising WC, wash basin and shower cubicle. Recess with mirror, extractor, chrome towel rail, recessed lighting and window.

Bedroom Two

Double doors providing plenty of natural light and outlook to the 'Green' at the front with feature glass Juliet style 'balcony'.

Bedroom Three

Rear window overlooking garden and built-in wardrobe with natural wood double doors.

Bathroom

Part-tiled and with window, wide toiletry ledge, chrome towel rail and extractor. Suite comprising WC, wash basin and bath with mixer/shower tap.

Outside

Set behind a shingled bed to the front, with shrubs and brick paved approach path. A driveway offers parking in front of your Garage.

Side gate opens to the enclosed rear garden, which has a generous patio adjoining the house, with lawn beyond, shrub borders and personal door to Garage.

welcome to

Beehive Way, Bawdeswell, Dereham

- Excellent Presentation Throughout
- 3 Bedroom Modern Detached Village House
- Remainder of NHBC Cover
- A rated EPC
- Driveway Parking and Garage
- Village Amenities
- Range of Appliances Included

Tenure: Freehold EPC Rating: Awaited
Council Tax Band: D

offers in excess of

£300,000



Please note the marker reflects the
postcode not the actual property

view this property online [williambrown.co.uk/Property/RPM103981](https://www.williambrown.co.uk/Property/RPM103981)



Property Ref:
RPM103981 - 0002

1. MONEY LAUNDERING REGULATIONS Intending purchasers will be asked to produce identification documentation at a later stage and we would ask for your co-operation in order that there is no delay in agreeing the sale. 2. These particulars do not constitute part or all of an offer or contract. 3. The measurements indicated are supplied for guidance only and as such must be considered incorrect. Potential buyers are advised to recheck measurements before committing to any expense. 4. We have not tested any apparatus, equipment, fixtures or services and it is in the buyer's interest to check the working condition of any appliances. 5. Where an EPC, or a Home Report (Scotland only) is held for this property, it is available for inspection at the branch by appointment. If you require a printed version of a Home Report, you will need to pay a reasonable production charge reflecting printing and other costs. 6. We are not able to offer an opinion either written or verbal on the content of these reports and this must be obtained from your legal representative. 7. Whilst we take care in preparing these reports, a buyer should ensure that his/her legal representative confirms as soon as possible all matters relating to title including the extent and boundaries of the property and other important matters before exchange of contracts.

William H Brown is a trading name of Sequence (UK) Limited which is registered in England and Wales under company number 4268443, Registered Office is Cumbria House, 16-20 Hockliffe Street, Leighton Buzzard, Bedfordshire, LU7 1GN. VAT Registration Number is 500 2481 05.



william h brown



01603 873208



Reepham@williambrown.co.uk



4 Townsend Court, REEPHAM, NORWICH,
Norfolk, NR10 4LD



[williambrown.co.uk](https://www.williambrown.co.uk)