

Lydford Walk, Bristol, BS3 5LJ

£2,000 Per Month

Council Tax Band: B



Nestled in the cup-de-sac of Lydford Walk, Bedminster, Bristol, this delightful end-terrace house offers a perfect blend of comfort and convenience.

The property boasts, to the ground floor, a well-appointed bathroom, a good size lounge and a kitchen. Upstairs there are three bedrooms. One of the standout features of this home is the parking space available for one vehicle.

The location itself is a significant draw, with local amenities, schools, and parks within easy reach, making it a desirable area for families and professionals alike.

In summary, this end-terrace house on Lydford Walk presents an excellent opportunity for those looking to settle in Bristol. With its ample living space, convenient parking, and proximity to local facilities, it is a property that should not be missed.

A combined income in excess of £65,000 pa is required for this property.

Full referencing and ID checks will apply.

Monthly rent £2000

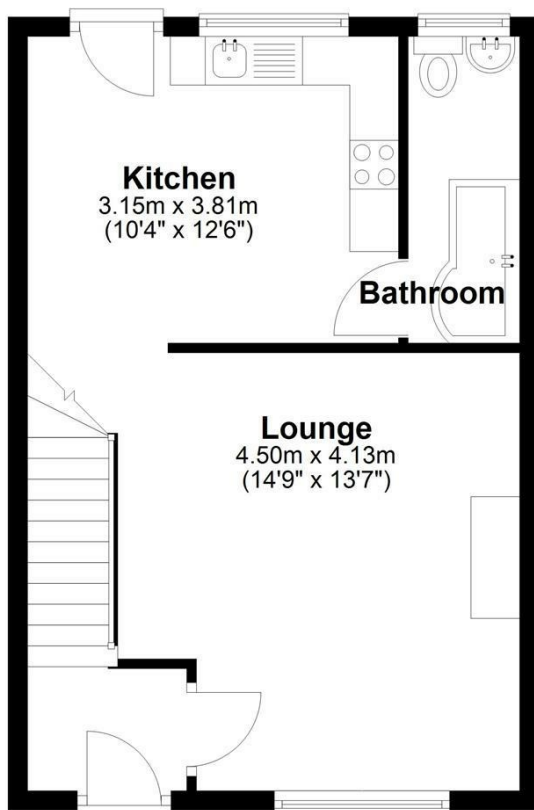
Deposit £2300

Holding deposit £460

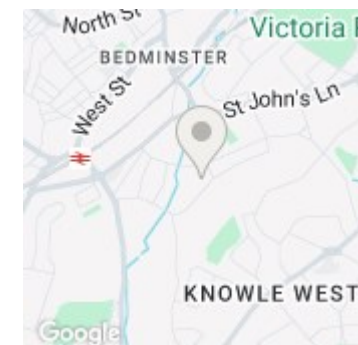
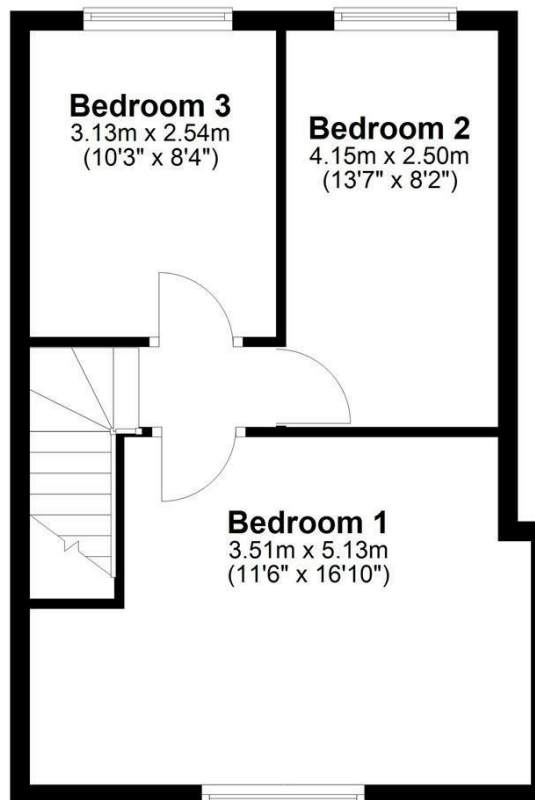


Open House Bristol North East

Ground Floor



First Floor



Energy Efficiency Rating		Current	Potential
Very energy efficient - lower running costs			
(92 plus)	A		
(81-91)	B		86
(69-80)	C	70	
(55-68)	D		
(39-54)	E		
(21-38)	F		
(1-20)	G		
Not energy efficient - higher running costs			
England & Wales		EU Directive 2002/91/EC	