



5 Edward Lisle Gardens

Tettenhall
WV6 8UB

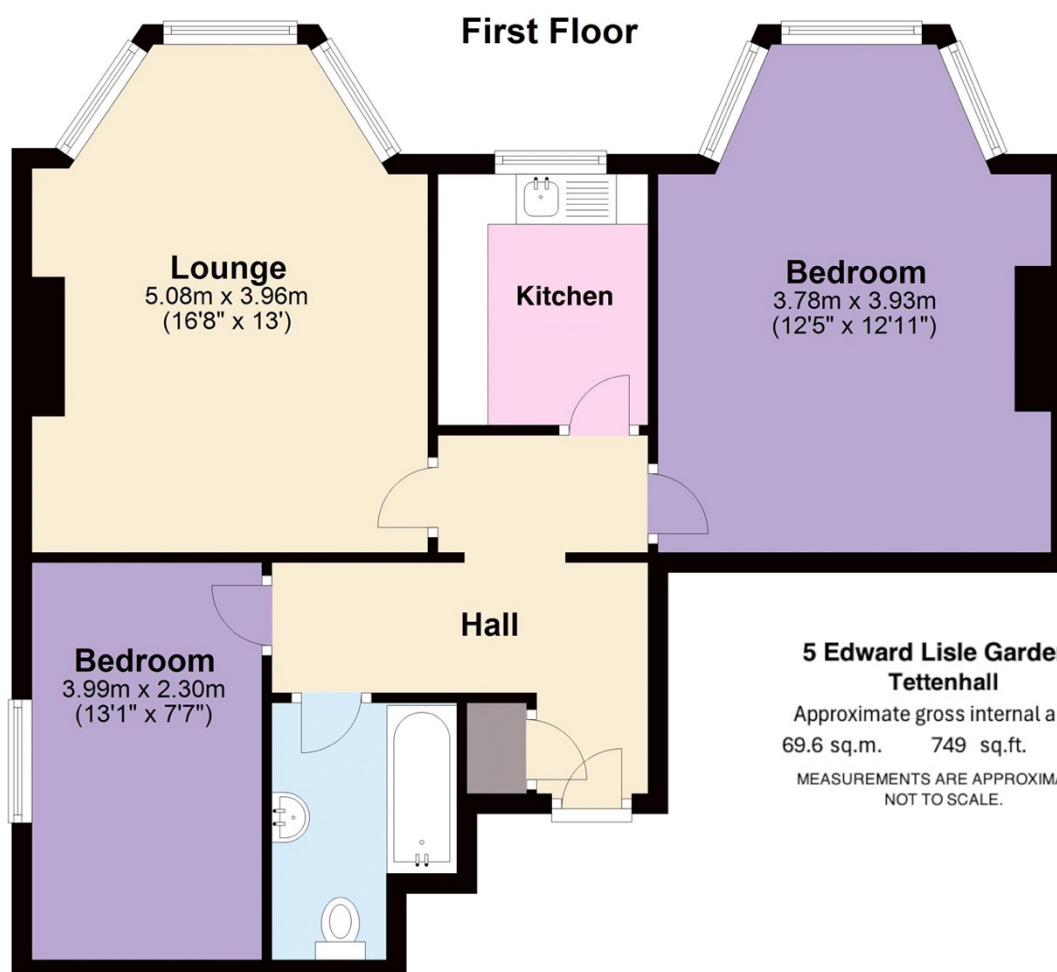
peterjames
PROPERTY



5 Edward Lisle Gardens

*** Apartment 5 * A beautifully presented two-bedroom first-floor apartment, situated within a stunning Georgian building on a secure, exclusive development overlooking Tettenhall's Upper Green * Spacious hall * Lounge with bay window * Master bedroom with bay window * Second double bedroom * Family bathrooms * Gated parking * Lovely communal gardens * Secure entry with intercom system ***

This delightful apartment offers elegant and versatile living accommodation with glorious views across Tettenhall's Upper Green. Positioned within the original Georgian wing of a modern development, it combines period charm, including high ceilings, with modern comforts. Just a short walk to Tettenhall village High Street, the property benefits from excellent local amenities including restaurants and coffee shops, making it a desirable and convenient home.



Fixtures & Fittings - All carpets and curtains are excluded from the sale but may be available by separate negotiation.