



 3

 1

 1

 D

**DavidJames**  
the estate agent

**Gunthorpe Drive, Nottingham, NG5 3DW**

**£975 Per Month**

# About This Property

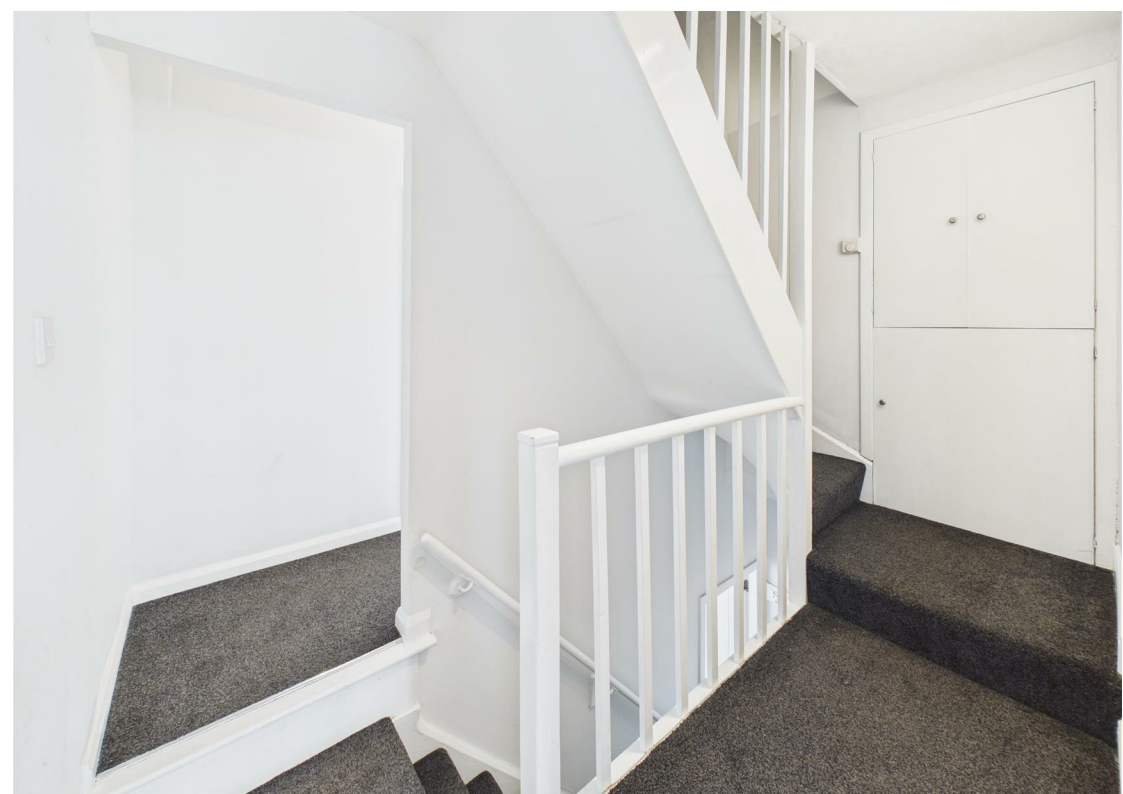
This well-presented three-bedroom mid-townhouse in the popular area of Sherwood offers comfortable and versatile living. The property features a spacious living room, along with a fitted kitchen complete with integrated cooking appliances. Upstairs, there are three bedrooms comprising two generous doubles and a versatile single room, ideal as a home office, nursery or guest space. The accommodation is completed by a three-piece bathroom suite with a shower over the bath. Externally, the property benefits from a rear garden with a large patio area, while to the front there is a driveway offering convenient off-road parking. Ideally located close to City Hospital, as well as a range of local amenities and excellent public transport links, this property combines practicality with a sought-after location.

Available From: Now  
Furnishing: Unfurnished  
EPC Rating: D  
Council Band: A



- Mid townhouse
- Spacious living room
- Fitted kitchen with integrated cooking appliances
- Two double bedrooms, versatile single bedroom
- Three-piece bathroom with shower over bath
- Full double glazing & gas central heating
- Rear garden with patio area
- Driveway providing off-road parking
- Close to City Hospital
- Excellent access to local amenities and public transport



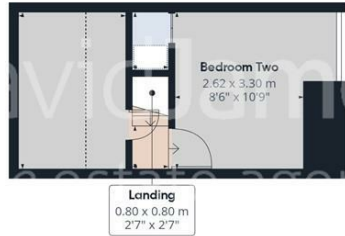




Floor 0 Building 1



Floor 1 Building 1



Floor 2 Building 1



Approximate total area<sup>(1)</sup>  
70.9 m<sup>2</sup>  
762 ft<sup>2</sup>

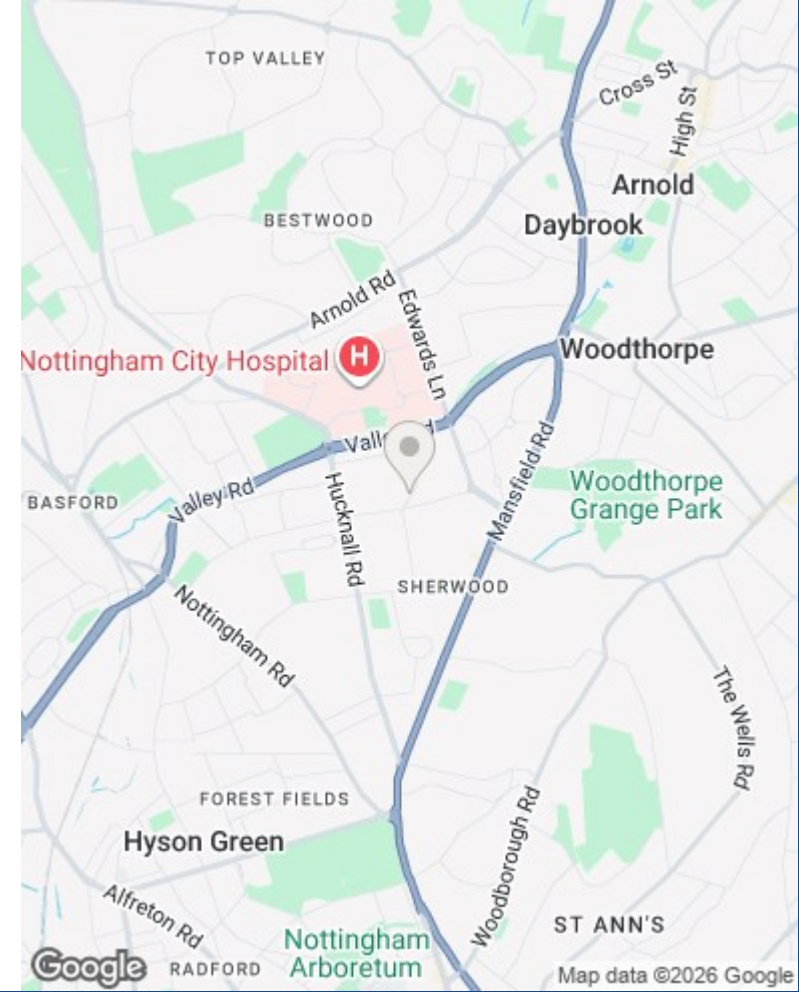
Reduced headroom  
4.7 m<sup>2</sup>  
51 ft<sup>2</sup>

(1) Excluding balconies and terraces

Reduced headroom  
----- Below 1.5 m/5 ft

Calculations reference the RICS IPMS 3C standard. Measurements are approximate and not to scale. This floor plan is intended for illustration only.

GIRAFFE360



These particulars are produced in good faith, are set out as a general guide only and do not constitute any part of a contract. No person in the employment of David James Estate Agents Ltd has any authority to make any representation whatsoever in relation to the property. All services, together with electrical fittings or fitted appliances have NOT been tested. All the measurements given in the details are approximate. Floor plans are for illustrative purposes only and are not drawn to scale. The position and size of doors, windows, appliances and other features are approximate only. The photographs of this property have been taken with a 10mm wide-angle lens. No responsibility can be accepted for any loss or expense incurred in viewing. If you have a property to sell you may wish to take advantage of our free valuation service. David James Estate Agents have established professional relationships with third-party suppliers for the provision of services to Clients. As remuneration for this professional relationship, the agent receives referral commission from the third-party company. David James Estate Agents receives the following commission from each third party supplier on a per referral basis: W A Barnes Ltd: £60 including VAT. All Moves UK Ltd: 18% including VAT of the invoice total (£107 including VAT average). MoveWithUs Limited: £188 including VAT (average).

**Council Tax Band: A**  
**Nottingham City Council**



David James Estate Agents  
45b Plains Road, Mapperley, Nottingham, NG3 5JU  
t: 0115 962 4213 e: lettings@david-james.com

