

Offered for sale with no forward chain is this well-presented three bedroom semi-detached home, situated in a popular road. The property is close to Stoke Road shops and the Town Centre and benefits from an enclosed rear garden, two bathrooms and a conservatory. An internal viewing is recommended.

**The Accommodation Comprises:**  
UPVC double glazed front door to:

**Entrance Hall**  
Stairs to First Floor, radiator, doors to:

**Lounge 11' 0" x 13' 2" (3.35m x 4.01m)**  
UPVC double glazed bay window to front elevation, living flame gas fire with decorative surround and hearth, radiator.

**Kitchen/Diner 11' 0" x 19' 7" (3.35m x 5.96m)**  
UPVC double glazed window to side elevation, fitted with a range of modern base cupboards and matching eye level units, work surface over, stainless steel sink unit with mixer tap, integrated double oven, gas hob with extractor hood over, integrated fridge/freezer, integrated dishwasher, cupboard housing combination boiler, breakfast bar, space for table and chairs, radiator, UPVC double glazed French doors to:

**Conservatory 10' 4" x 18' 0" (3.15m x 5.48m)**  
Polycarbonate roof, UPVC double glazed French doors to rear garden, UPVC double glazed windows to side and rear elevations, space and plumbing for washing machine, two radiators, door to:

**Shower Room 7' 11" x 3' 3" (2.41m x 0.99m)**  
Obscured UPVC double glazed window to side elevation, low level WC, wash hand basin with tiled splashback, shower cubicle with mains shower, ladder-style radiator.

**First Floor Landing**  
Access to loft space, door to:

**Bedroom One 11' 11" x 13' 2" (3.63m x 4.01m)**  
UPVC double glazed window to front elevation, radiator.

**Bedroom Two**  
UPVC double glazed window to rear elevation, radiator.

**Bedroom Three 8' 0" x 8' 0" (2.44m x 2.44m)**  
UPVC double glazed window to rear elevation, radiator.

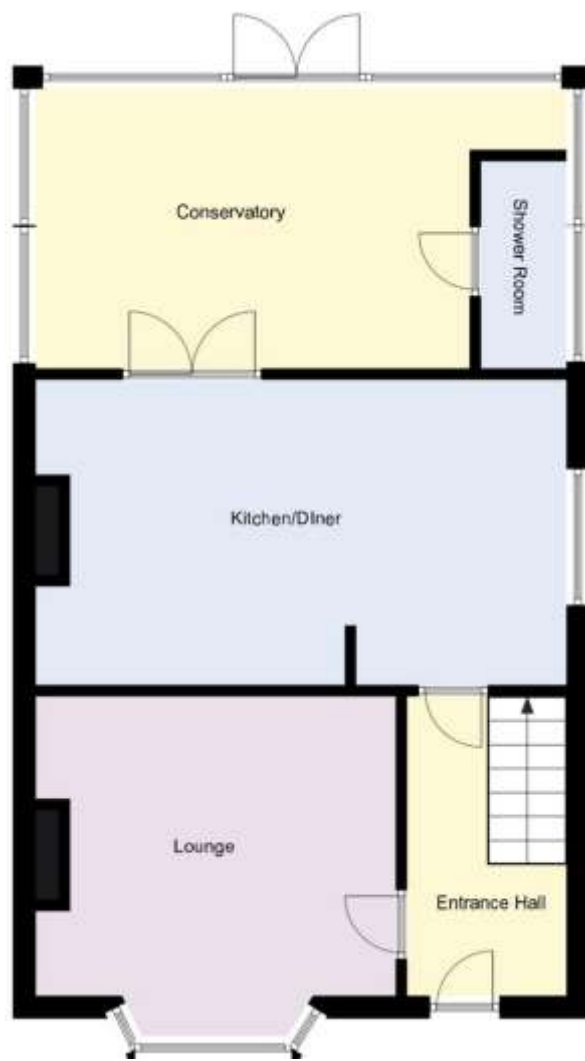
**Bathroom 8' 3" x 5' 11" (2.51m x 1.80m) max**  
Obscured UPVC double glazed window to front elevation, low level close coupled WC, pedestal wash hand basin, panelled bath with mixer tap and shower connection off, tiling to walls.

**Outside**  
The rear garden is a delightful feature of the home, enclosed by wood panel fencing, mainly laid to artificial lawn with decking and patio area, brick-built storage shed, flower borders, gate providing side pedestrian access.

To the front of the property is an area laid to block paving with decorative stone border, enclosed by timber gates and potential for off-roading parking (subject to relevant permissions).

**General Information**  
Construction: Traditional  
Water Supply: Portsmouth Water  
Sewerage: Mains  
Electric Supply: Mains  
Gas Supply: Mains  
Mobile & Broadband coverage: <https://checker.ofcom.org.uk>  
Flood Risk: [www.gov.uk/check-long-term-flood-risk](http://www.gov.uk/check-long-term-flood-risk)  
Tenure: Freehold  
Council Tax Band: B





**Disclaimer:** These particulars are set out as a general outline in accordance with the Consumer Protection from Unfair Trading Regulations 2008 (CPR's) and Business Protection from Misleading Marketing Regulations 2008 (BPR's) only for the guidance of intending purchasers or lessees, and do not constitute any part of an offer or contract. Details are given without any responsibility, and any intending purchasers, lessees or third parties should not rely on them as statements or representations of fact, but must satisfy themselves by inspection or otherwise as to the correctness of each of them.

We have not carried out a structural survey and the services, appliances and specific fittings have not been tested. All photographs, measurements, floor plans and distances referred to are given as a guide only and should not be relied upon for the purchase of carpets or any other fixtures or fittings. Gardens, roof terraces, balconies and communal gardens as well as tenure and lease details cannot have their accuracy guaranteed for intending purchasers. Lease details, service ground rent (where applicable) are given as a guide only and should be checked and confirmed by your solicitor prior to exchange of contracts.

No person in the employment of Fenwicks Estates Ltd has any authority to make any representation or warranty whatever in relation to this property. Purchase prices, rents or other prices quoted are correct at the date of publication and, unless otherwise stated, exclusive of VAT.

**Data Protection:** We retain the copyright in all advertising material used to market this Property.

**Money Laundering Regulations 2017:** Intending purchasers will be required to produce identification documentation once an offer is accepted.



£344,995

Peel Road, Gosport, PO12 1JS

\*DRAFT DETAILS\*

Fenwicks - Gosport Office: 02392 529889 [www.fenwicks-estates.co.uk](http://www.fenwicks-estates.co.uk)

**Fenwicks**  
THE INDEPENDENT ESTATE AGENT