



**Connells**

Broadmark Road  
Slough



### Property Description

A three bedroom end- terrace house situated in the popular Upton Lea area of Slough is now offered for sale. The property is within walking distance of local shops and in the catchments areas of two of Sloughs most popular schools of Iqra and Khalsa.

It benefits from 14 ft lounge, 14 ft integrated kitchen, Family bathroom, large garden, driveway offering off-street parking and potential to extend STPP & offers NO CHAIN.

### Entrance Hall

Radiator, laminate floor, stairs to first floor

### Lounge

Front aspect window, radiator, laminate floor

### Kitchen

Rear aspect window, range of wall & base units, single bowl sink drainer with mixer tap & cupboard under, four ring integrated gas hob with oven under, cookerhood, plumbing for washing machine, space for fridge freezer, wall mounted boiler, understair cupboard, radiator

### Bathroom

Rear aspect window, tiled bath with mixer tap & shower attachment, glass shower screen, wash hand basin with vanity unit, extractor fan, fully tiles

### First Floor

### Landing

Side aspect window, access to loft

### Bedroom One

Front aspect window, laminate floor, radiator

### Bedroom Two

Rear aspect window, laminate floor, radiator

## Bedroom Three

Rear aspect window, laminate floor, radiator

## Outside

### To The Front

Driveway, gate for rear access

### Rear Garden

Laid to lawn with patio area, shed

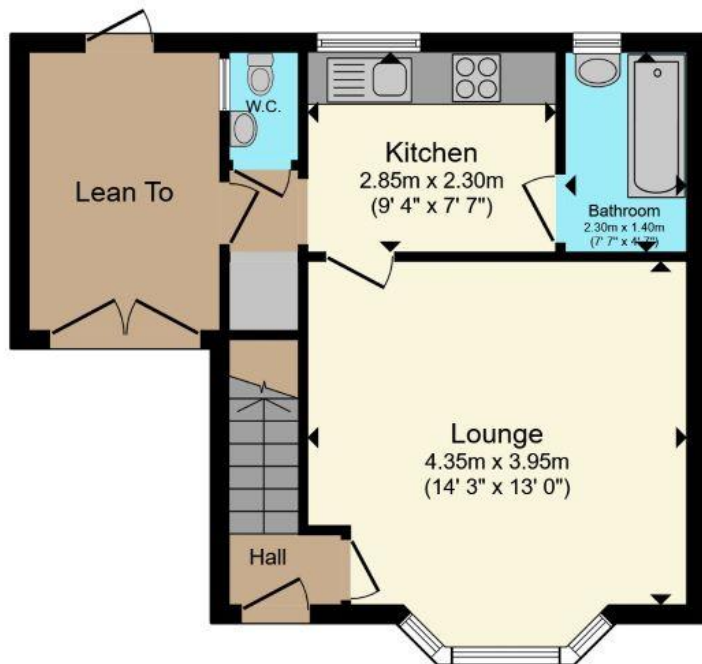
## Bathroom

Rear aspect window, tiled bath with mixer tap & shower attachment, glass shower screen, wash hand basin with vanity unit, extractor fan, fully tiles

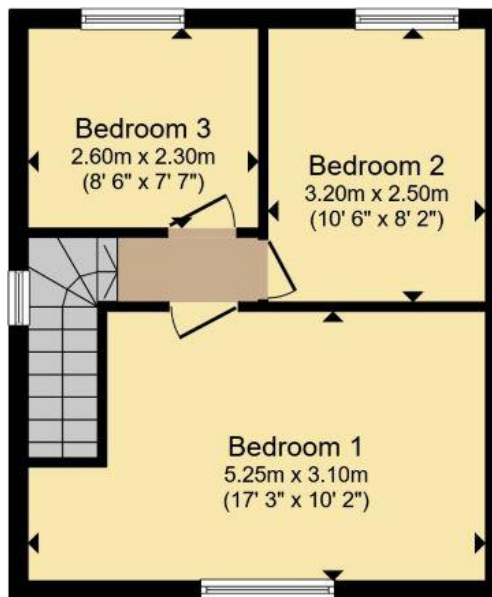
## Separate WC

Side aspect window, WC, wash hand basin, heated towel rail





**Ground Floor**



**First Floor**

Total floor area 74.9 m<sup>2</sup> (806 sq.ft.) approx

This floor plan is for illustrative purposes only. It is not drawn to scale. Any measurements, floor areas (including any total floor area), openings and orientation are approximate. No details are guaranteed, they cannot be relied upon for any purpose and they do not form part of any agreement. No liability is taken for any error, omission or misstatement. A party must rely upon its own inspection(s). Powered by [www.propertybox.io](http://www.propertybox.io)



To view this property please contact Connells on

**T 01753 810 870**  
**E [slough@connells.co.uk](mailto:slough@connells.co.uk)**

111 High Street  
 SLOUGH SL1 1DH

EPC Rating: D Council Tax  
 Band: C

**view this property online [connells.co.uk/Property/SGH310887](http://connells.co.uk/Property/SGH310887)**

Tenure: Freehold



1. MONEY LAUNDERING REGULATIONS Intending purchasers will be asked to produce identification documentation at a later stage and we would ask for your co-operation in order that there will be no delay in agreeing the sale. 2. These particulars do not constitute part or all of an offer or contract. 3. The measurements indicated are supplied for guidance only and as such must be considered incorrect. Potential buyers are advised to recheck measurements before committing to any expense. 4. We have not tested any apparatus, equipment, fixtures, fittings or services and it is in the buyers interest to check the working condition of any appliances.

Connells Residential is registered in England and Wales under company number 1489613, Registered Office is Cumbria House, 16-20 Hockliffe Street, Leighton Buzzard, Bedfordshire, LU7 1GN. VAT Registration Number is 500 2481 05.

**See all our properties at [www.connells.co.uk](http://www.connells.co.uk) | [www.rightmove.co.uk](http://www.rightmove.co.uk) | [www.zoopla.co.uk](http://www.zoopla.co.uk)**

Property Ref: SGH310887 - 0005