

1 Lime Tree Court Lime Tree Avenue, Hardwicke

Gloucester

Offers Over **£165,000**

1 Lime Tree Court Lime Tree Avenue

Hardwicke, Gloucester

Two Bedroom Ground Floor Apartment With No Onward Chain Located On Lime Tree Avenue, Hunts Grove!

The accommodation comprises of; Entrance hall, utility/airing cupboard, two DOUBLE bedrooms & open plan kitchen/living room.

Further benefits include; Gas central heating, a MHRV system, upvc double glazing, en-suite to bedroom one & an allocated parking space.

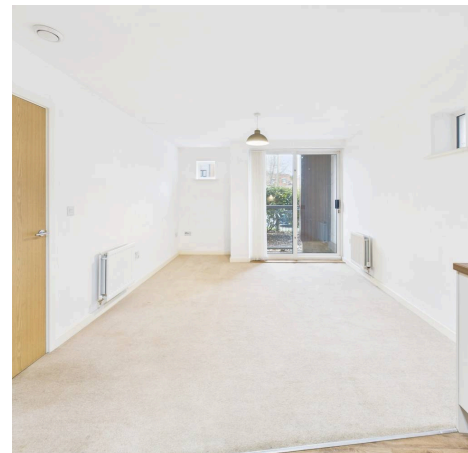
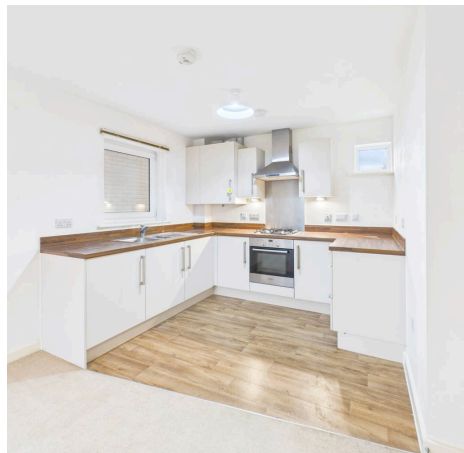
This property would make an ideal first time buy or investment!

Property for sale through Michael Tuck Estate Agents. Approximate rental value of £950 pcm, please contact Michael Tuck Lettings in Quedgeley for more details.

Call us today to arrange your viewing on 01452 543200.

Council Tax band: B | Tenure: Leasehold | EPC Energy Efficiency Rating: C | EPC Environmental Impact Rating:

- Upvc Double Glazing
- No Onward Chain
- Ideal First Buy
- Allocated Parking Space
- Open Plan Living Space
- Gas Central Heating
- En-Suite To Bedroom One
- Ground Floor
- Energy Rating C



Entrance Hallway

Bedroom One

13' 7" x 8' 10" (4.14m x 2.70m)

En-Suite

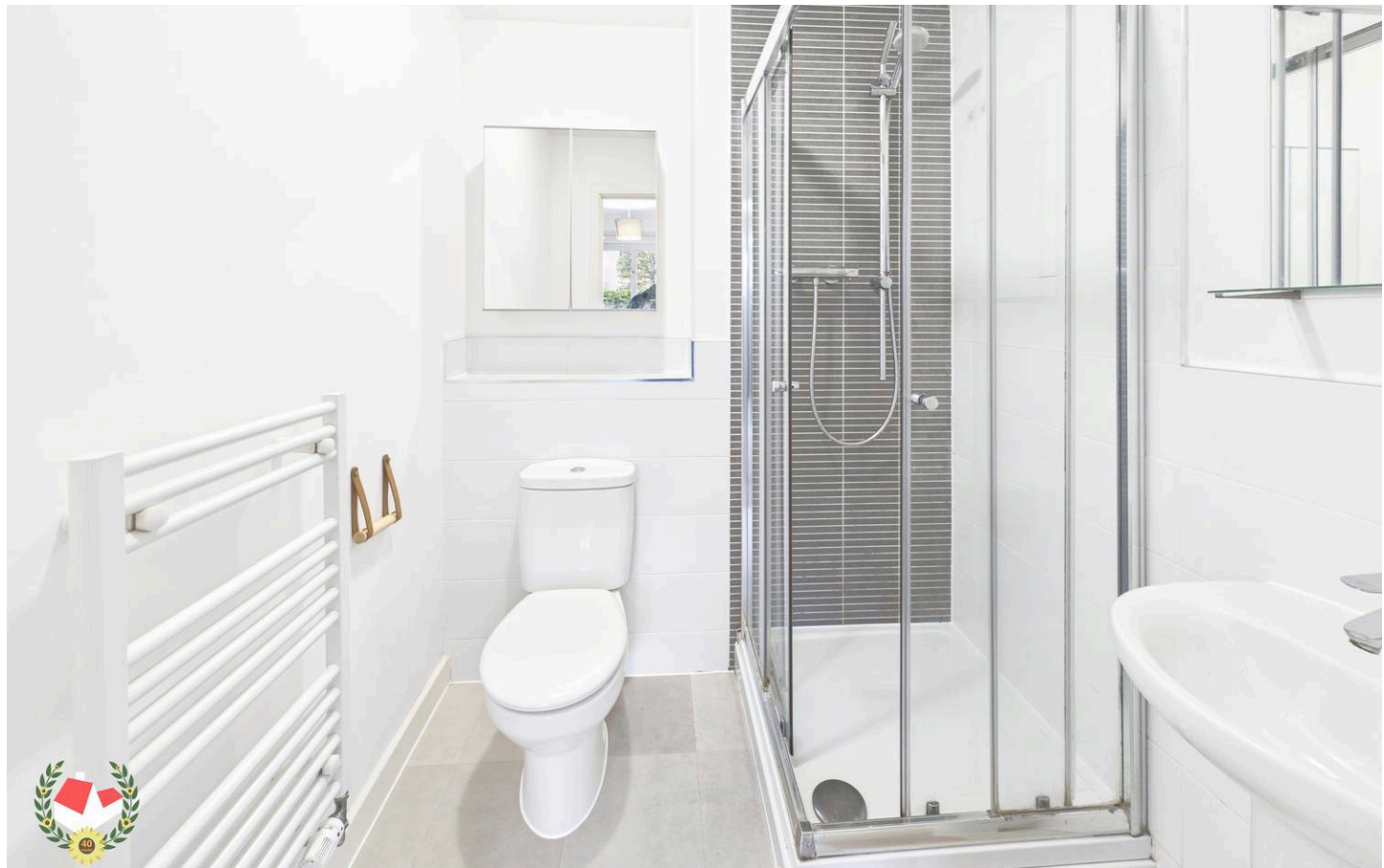
Bedroom Two

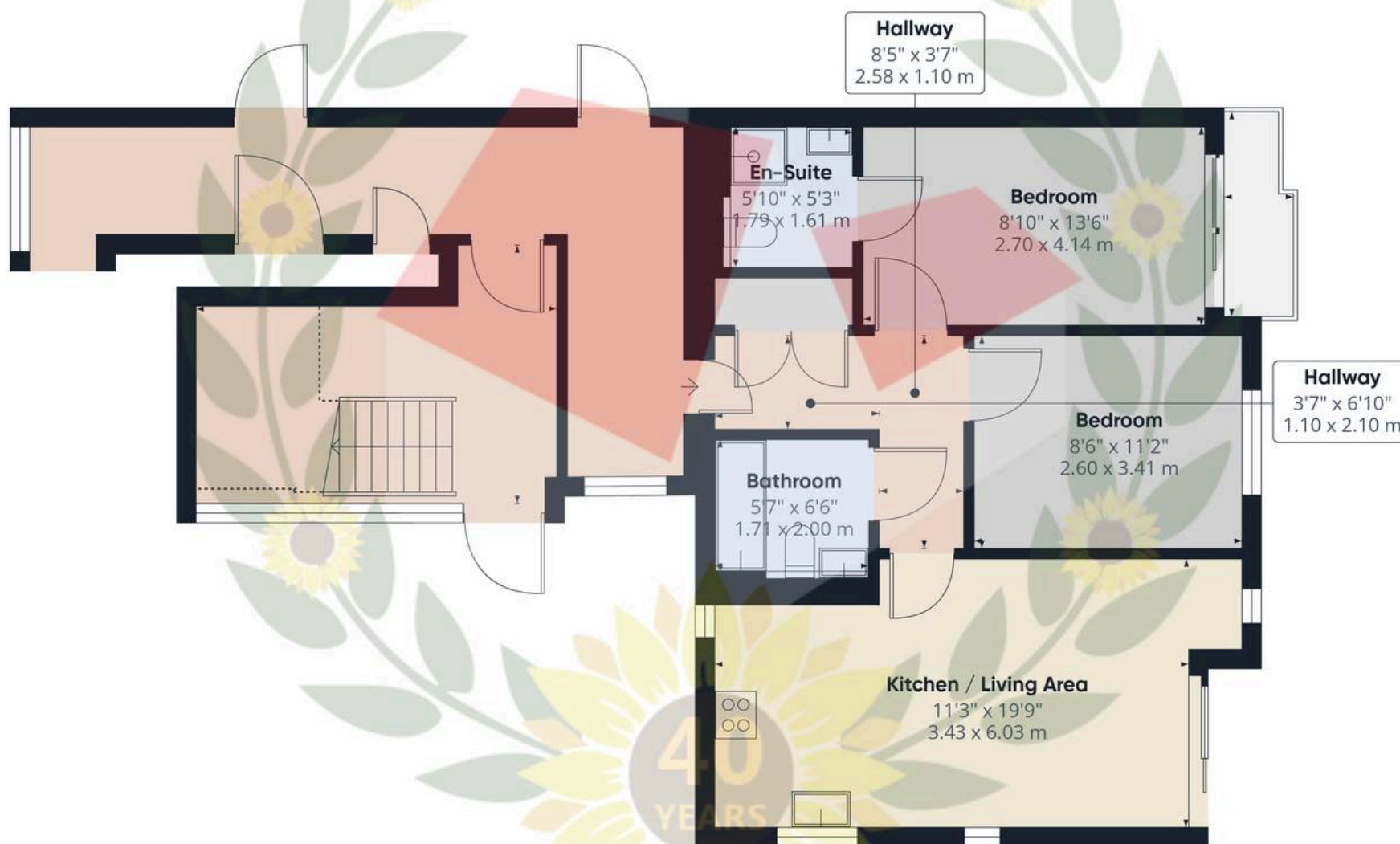
11' 2" x 8' 6" (3.41m x 2.60m)

Bathroom

Kitchen/Living Area

19' 9" x 11' 3" (6.03m x 3.43m)





Approximate total area⁽¹⁾

719 ft²
66.7 m²

Balconies and terraces

22 ft²
2 m²

Reduced headroom

56 ft²
5.2 m²

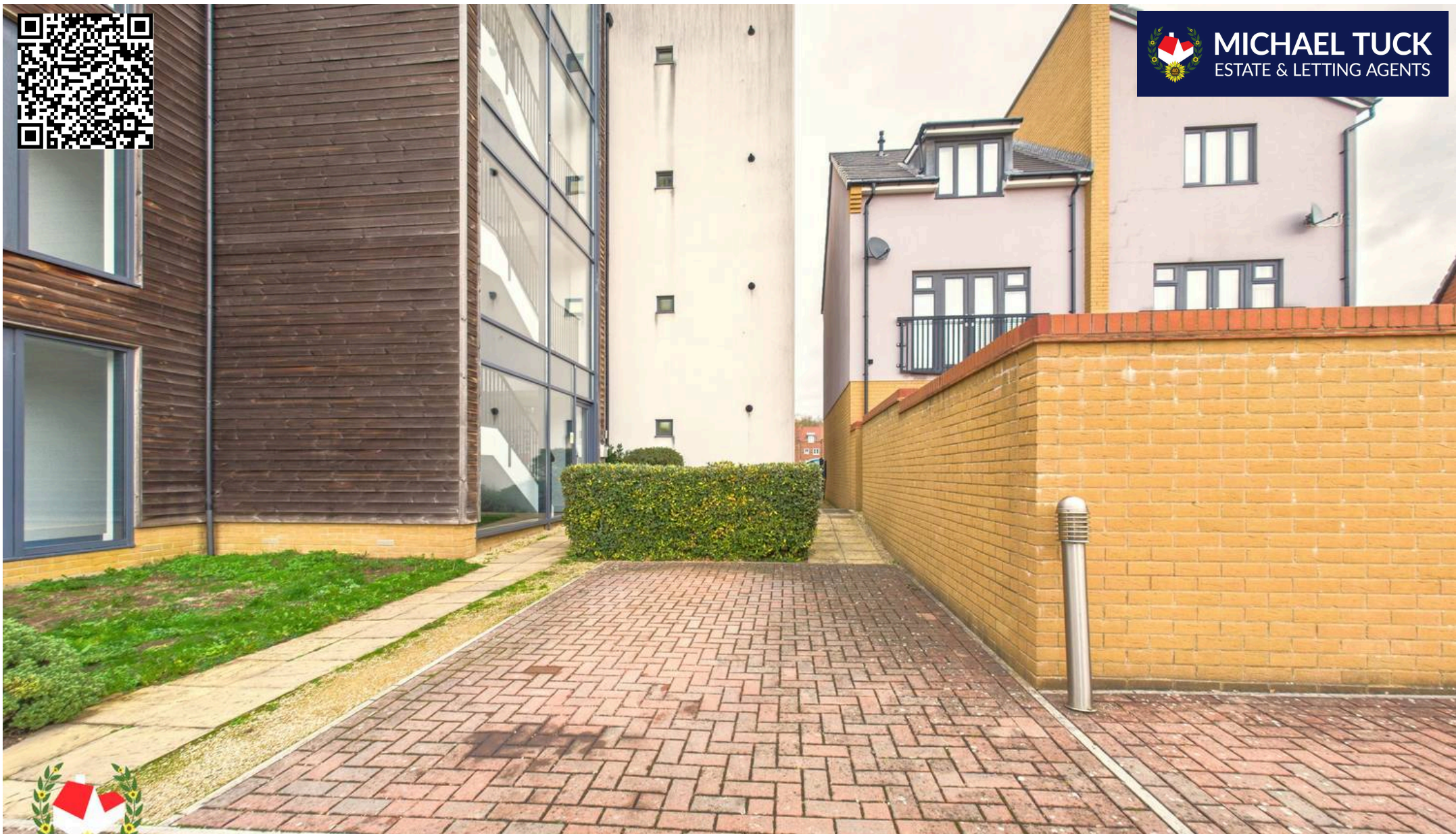
(1) Excluding balconies and terraces

Reduced headroom

Below 5 ft/1.5 m

Calculations reference the RICS IPMS 3C standard. Measurements are approximate and not to scale. This floor plan is intended for illustration only.

GIRAFFE360



Michael Tuck Quedgeley

1 School Lane, Quedgeley - GL2 4PJ

01452 543200 • estates.quedgeley@michaeltuck.co.uk • www.michaeltuck.co.uk/