

Buy your next home with Next Home

Leading Perthshire Estate Agency

7 Jura Way, Crieff, PH7 3FX

Offers Over £385,000


NEXTHOME
ESTATE & LETTING AGENTS

Buying with Next Home

7 Jura Way, Crieff, PH7 3FX

Many thanks for your interest with 7 Jura Way, Crieff, PH7 3FX.

Next Home Estate Agents dedicate themselves to be available when you are, offering an unbeatable service 7 days a week until 9pm.

We have the largest sales team in Perthshire, operating from our 5 offices throughout Perthshire and delivering more sales than any other estate agent.

Not only are we Perthshire's Number 1 choice but we are also local. One of the reasons we know the local markets so well is because we live here. So let us guide you through the selling and buying process.

If you're a first time buyer we have incentives to help get you onto the property ladder - our consultants can advise you through the whole process.

We offer free, no obligation mortgage advice to all our buyers.

If you have a property to sell, contact us to arrange a valuation. We are renowned in getting our customers moving quicker and at a higher price than our competitors. Put us to the test and get your free valuation today, call 01738 444342.

If you would like to be kept informed of other great properties like this one please register on our hot buyers list, where we will email you of new property listings and property open days.

Next Home your number 1 choice for property sales



FREE Valuations



We're open 7 days a week until 9pm



Registered Buyers



No obligation mortgage advice



Conveyancing Quotations



First Time Buyer with No Deposit



Next Home's Buying Guide



Next Home Open Days

About the Area

Situated within a modern residential development on the edge of the historic market town of Crieff, this property enjoys an excellent balance of peaceful surroundings and convenient access to a wide range of local amenities. Crieff is one of Perthshire's most desirable towns, renowned for its welcoming community, attractive streetscapes and outstanding countryside setting at the gateway to the Scottish Highlands.

The town centre is just a short distance away and offers an excellent selection of independent shops, cafés, restaurants, traditional pubs and supermarkets, alongside healthcare facilities, leisure amenities and highly regarded primary and secondary schooling. Crieff is well connected to Perth, Stirling and Glasgow via the A85 and surrounding road network, making it an ideal location for commuters while retaining the charm of a thriving country town.

Surrounded by some of Scotland's most spectacular scenery, Crieff is a haven for outdoor enthusiasts. The nearby **MacRosty Park** provides beautiful riverside walks and family recreation, while **Lady Mary's Walk**, **The Knock** and **Torlum Hill** offer scenic walking routes with panoramic views across Strathearn. Golfers are well catered for with the popular **Crieff Golf Club**, and the area also boasts excellent opportunities for cycling, fishing and country pursuits.

Crieff is home to several renowned visitor attractions, including the world-famous **Glenturret Distillery**—Scotland's oldest working distillery—and the prestigious **Glenturret Lalique Restaurant**, holder of two Michelin stars. The iconic **Crieff Hydro Hotel** offers an extensive range of leisure facilities, spa experiences, dining options and outdoor activities, while nearby **Drummond Castle Gardens**, regarded as one of Europe's finest formal gardens, provides a spectacular destination throughout the seasons.

Combining exceptional natural beauty, rich history and an outstanding range of amenities, Crieff continues to be one of Perthshire's most sought-after locations, offering an enviable lifestyle for families, professionals, retirees and those seeking a peaceful retreat within easy reach of Scotland's major cities.





NEXTHOME

ESTATE & LETTING AGENTS

Get to know about our newly listed properties 1st by
signing up to our Hot Buyers lists!

Visit www.nexthomeonline.com/buying

Property Summary

Next Home Estate Agents are delighted to present this exceptional four bedroom detached family home, built by the renowned Campion Homes and occupying an elevated position within a desirable modern development. Just one year old and presented in immaculate, move-in condition, this outstanding property offers spacious contemporary living, high-quality finishes and the reassurance of the remaining one-year Campion Homes warranty together with approximately nine years of the NHBC guarantee.

Finished to an exceptionally high standard throughout, the home is beautifully decorated in neutral tones, creating a bright and welcoming interior ready for immediate occupation. The generous layout has been thoughtfully designed for modern family living, with spacious accommodation complemented by quality fixtures and fittings throughout. The stylish kitchen is fitted with an excellent range of integrated Bosch appliances, including an induction hob, oven and microwave, while the home's efficient gas central heating system features independently controlled zones for the ground and upper floors, enhancing both comfort and energy efficiency.

There are four generously proportioned double bedrooms, with the principal and second bedrooms benefiting from built-in wardrobes with soft-closing doors. The west-facing upper rooms also enjoy attractive views towards the surrounding mountains, adding to the appeal of this superb home.

Externally, the property continues to impress with a large, fully enclosed private rear garden enjoying an easterly aspect, allowing sunlight throughout most of the day, with evening sunshine extending into part of the garden thanks to the generous spacing between neighbouring properties. A garden shed is included, while to the front there is a driveway providing parking for multiple vehicles, an integral garage and a 7.4kW electric vehicle charging point with an 8-metre tethered cable.

Combining quality craftsmanship, generous proportions and an enviable setting with excellent privacy between neighbouring homes, this outstanding property represents a superb opportunity to acquire a modern family home built to an exceptional standard.



Key property features

- ✓ 4 Double bedrooms
- ✓ Spacious accommodation throughout
- ✓ Finished to an exceptionally high standard
- ✓ Neutrally decorated throughout
- ✓ Elevated position
- ✓ Driveway & garage
- ✓ Gas central heating, solar panels, and double glazing
- ✓ Electric car charger point
- ✓ Private full enclosed garden
- ✓ Excellent storage













Next Home - 7 Jura Way, Crieff, PH7 3FX

An aerial photograph of a residential neighborhood, showing rows of houses with red brick walls and grey roofs. The image is overlaid with a semi-transparent blue filter. The houses are arranged in a grid-like pattern, with some featuring gardens and driveways. The overall scene is a typical suburban housing estate.

Have a property to sell?

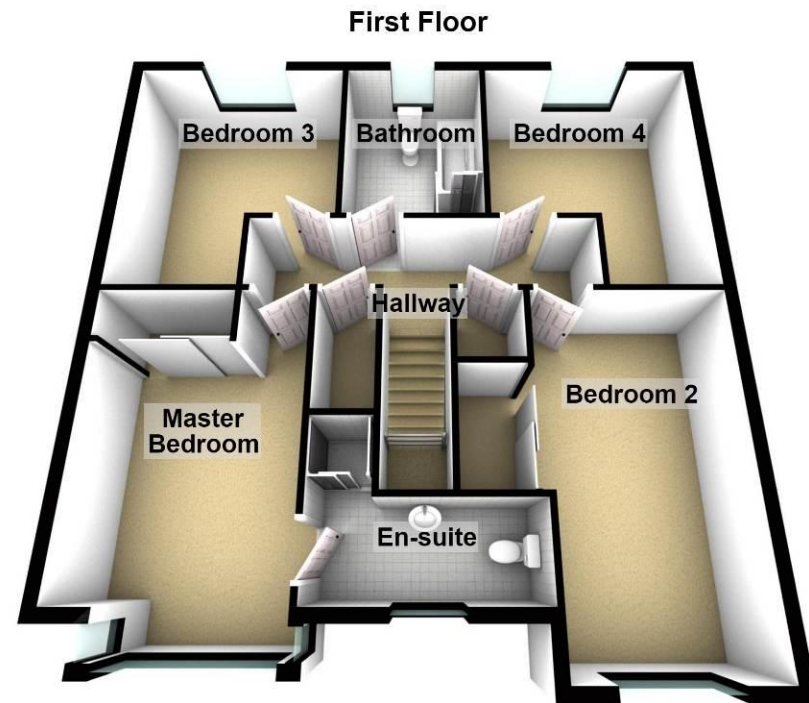
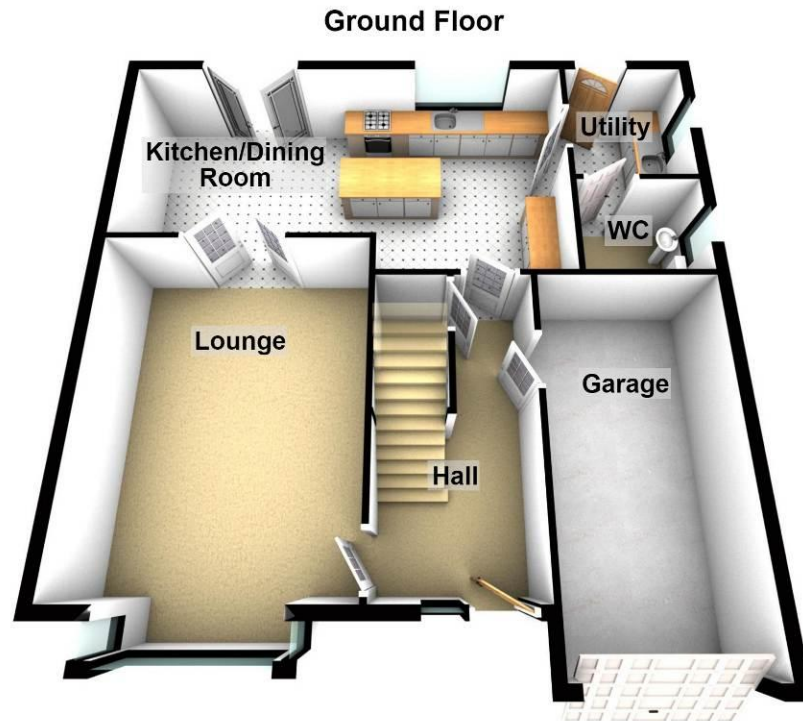
An expert from our local branch will provide you with the most accurate valuation.



NEXTHOME

ESTATE & LETTING AGENTS

Floorplans





Property Room Sizes

LOUNGE

19' 7" x 13' 6" (5.97m x 4.12m)

KITCHEN/DINER

12' 7" x 24' 1" (3.85m x 7.35m)

UTILITY ROOM

7' 7" x 6' 1" (2.32m x 1.86m)

WC

4' 8" x 6' 1" (1.44m x 1.86m)

GARAGE

18' 4" x 8' 10" (5.60m x 2.70m)

BEDROOM 1

17' 0" x 10' 2" (5.2m x 3.12m)

ENSUITE

7' 8" x 8' 11" (2.36m x 2.72m)

BEDROOM 2

12' 11" x 13' 0" (3.96m x 3.98m)

BEDROOM 3

13' 3" x 12' 0" (4.06m x 3.67m)

BEDROOM 4

13' 3" x 10' 10" (4.06m x 3.32m)

BATHROOM

9' 6" x 6' 11" (2.92m x 2.12m)

PLEASE NOTE: These particulars whilst believed to be accurate are set out as a general outline only for guidance and do not constitute any part of an offer or contract intending, purchasers should not rely on them as statements or representations of fact, but must satisfy themselves by inspection or otherwise as to their accuracy. No person in this firm's employment has the authority to make or give representation or warranty in respect of the property. All room sizes are approximate and for general guidance only. They cannot be relied upon for fitting carpets, furniture etc.



NEXTHOME

ESTATE & LETTING AGENTS

TO ARRANGE A VIEWING OF THIS PROPERTY PLEASE TELEPHONE YOUR LOCAL BRANCH BELOW:

63 – 65 George Street, Perth 01738 44 43 42

41 - 43 Allan Street, Blairgowrie..... 01250 39 80 02

47a Atholl Road, Pitlochry..... 01796 54 80 14

1a James Square, Crieff.....01764 65 00 44

211 High Street, Auchterarder.....01764 66 36 66

Email sales@nexthomeonline.co.uk

For more information about Next Home and our services please visit www.nexthomeonline.co.uk

The only Perthshire estate agent available 7 days until 9pm

PLEASE NOTE: These particulars whilst believed to be accurate are set out as a general outline only for guidance and do not constitute any part of an offer or contract intending, purchasers should not rely on them as statements or representations of fact, but must satisfy themselves by inspection or otherwise as to their accuracy. No person in this firm's employment has the authority to make or give representation or warranty in respect of the property. All room sizes are approximate and for general guidance only. They cannot be relied upon for fitting carpets, furniture etc.

Registered Office Argyll House, Quarrywood Court, Livingston, West Lothian EH54 6AX. Registered in Scotland No. SC264812. NEXTHOME (Scotland) Ltd is an appointed representative of Kinggate Law Limited, which is authorised and regulated by the Financial Conduct Authority for advising on and arranging mortgages and insurance, broking and debt counselling of consumer credit agreements.



Next Home are proud to be members of the Property Ombudsman Scheme