



## Cromwell Road, SW7

£598 Per week

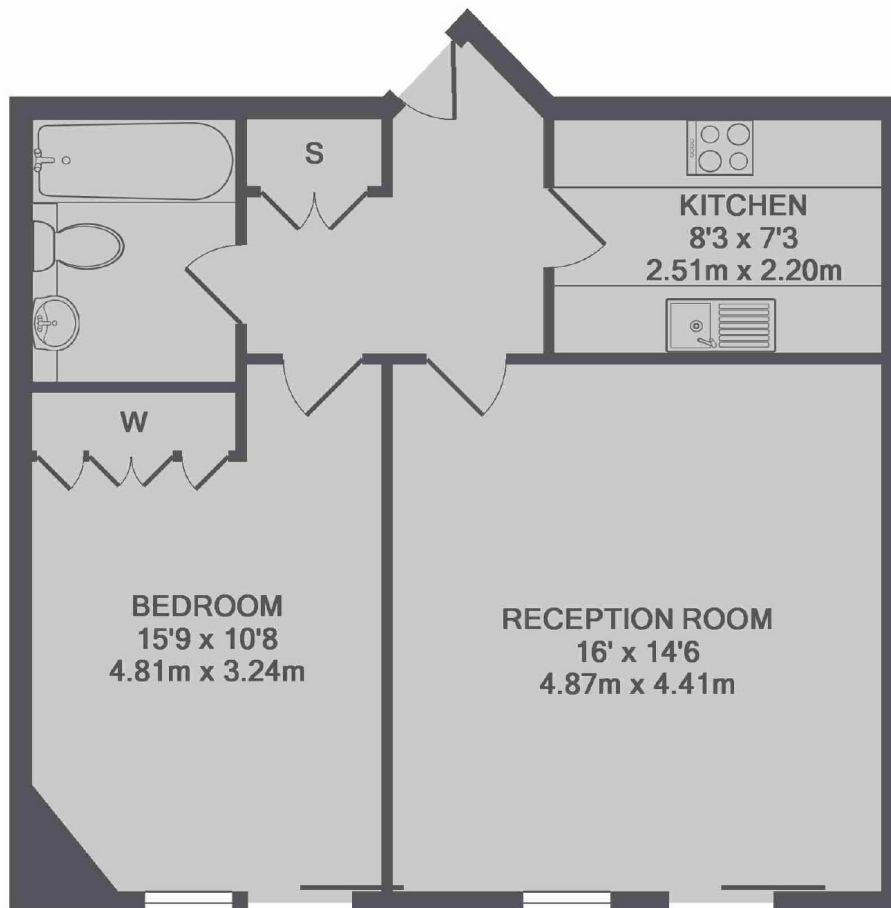
A well-proportioned one bedroom apartment situated on the second floor (with lift) of a portered building. The apartment has wood flooring throughout, a separate kitchen and ample storage.

The property is situated just under one mile from Gloucester Road Station and offers convenient access to local shops, including Waitrose and Sainsbury's, while also being close to Hyde Park.

### Features

- One Bedroom
- Separate Kitchen
- Patio
- Second Floor (Lift Access)
- Concierge
- Gloucester Road Station

# Cromwell Road, London, SW7



TOTAL APPROX. FLOOR AREA 589 SQ.FT. (54.7 SQ.M.)