



DANIEL ARCHER

exp[®] UK

@ daniel.archer@exp.uk.com

🌐 danielarcher.exp.uk.com

☎ 07792 947 756

Carlton Park Avenue, Raynes Park, SW20

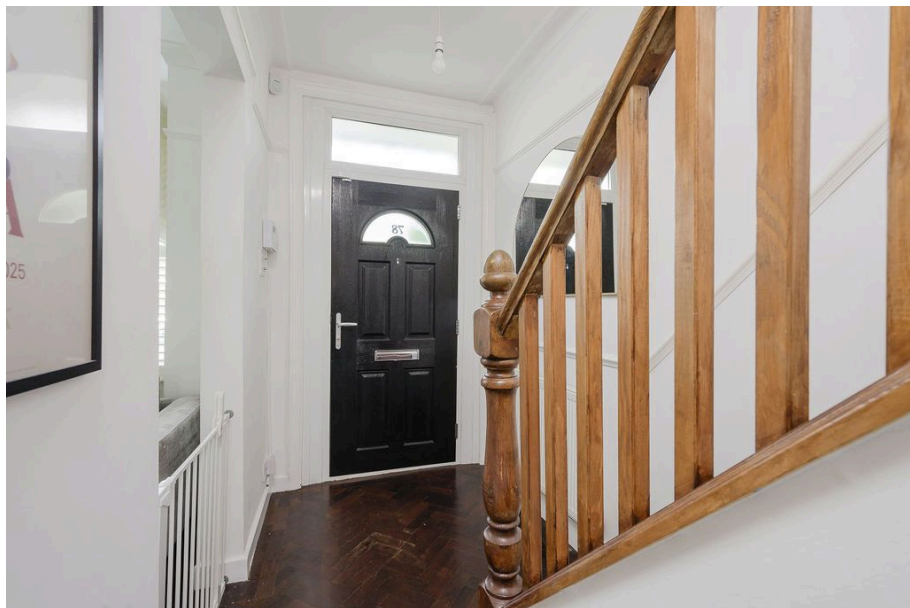
£850,000

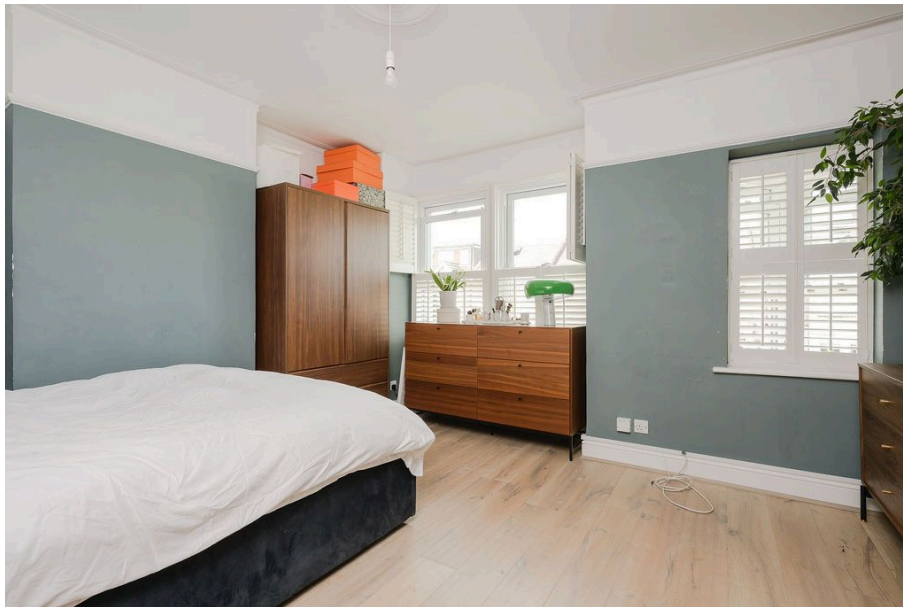
🛏️ 2 🚿 1 🚗 2

- Stunning Two Bedroom Terraced Edwardian House (870 Sq.Ft)
- Extended Living Space with Modern Elegance
- Beautiful Extended Kitchen/ Diner and Separate Utility
- Gorgeous Private Garden
- Close to Raynes Park Station, Schools and Amenities
- Sought After West Wimbledon Location
- Double Length Through Reception
- Upstairs Family Bathroom
- Off Street Parking
- Property Ref: DA0587



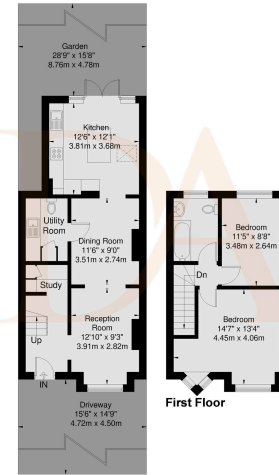
Stunning two bedroom Edwardian terraced house (870 Sq.Ft) with off street parking and delightful private garden, enviably situated in a sought after West Wimbledon location, just a short walk from Raynes Park station and amenities. The property offers bright and spacious, extended accommodation, with stylish interiors, modern elegance and period appeal – the perfect space for a modern lifestyle. Features include two interconnecting reception rooms, a stunning extended kitchen/ diner, separate utility, upstairs family bathroom, gas central heating, double glazing, quality floor coverings and neutral decor.





Carlton Park Avenue

Approx Gross Internal Area
 Ground Floor = 47.3 Sq. m / 509 Sq Ft
 First Floor = 33.6 Sq. m / 361 Sq Ft
 Total = 80.9 Sq. m / 870 Sq Ft



Viewmedia © 2020
 Viewmedia.co.uk
 Whilst every attempt has been made to ensure the accuracy of this floor plan, measurements of doors, windows and rooms are approximate and no responsibility is taken for any error or omission. This illustration is for identification purposes only. Not drawn to scale. Dimensions shown are to the nearest 3" and are to the points indicated by the arrow heads.

