



CHELSEA MANOR GARDENS, SW3

£1,185,000

Porter and two lifts
Two bedrooms
Long lease
South-facing
Communal garden
Balcony

@marshandparsons
marshandparsons.co.uk

MARSH &
PARSONS



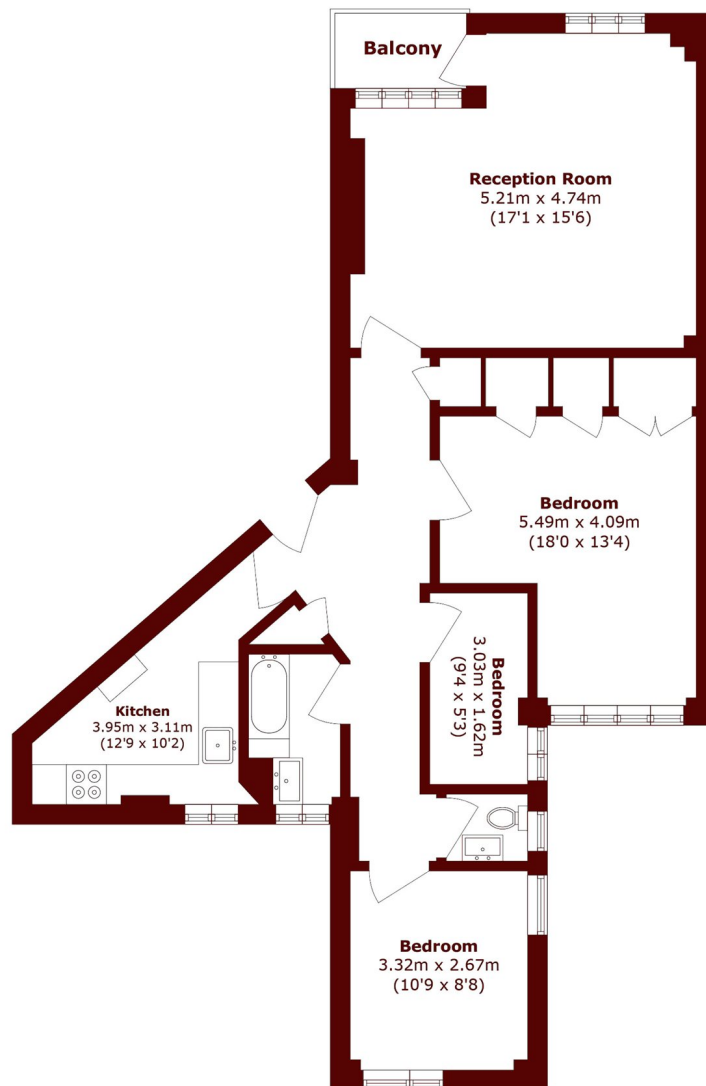
ABOUT THE PROPERTY

An exceptional three-bedroom apartment in one of Chelsea's most sought-after portered mansion blocks, with two lifts and a communal garden, moments from the King's Road. Situated within the prestigious Kings Court South on Chelsea Manor Gardens, this homely and recently refurbished three bedroom residence (or two bedrooms with study) offers generous lateral living space, excellent natural light, and portorage in the heart of SW3.

The accommodation comprises a spacious south facing reception room ideal for both entertaining and everyday living, a separate fully fitted kitchen, three bedrooms, and a family bathroom. Large windows throughout flood the apartment with light and provide attractive outlooks over



STEP INSIDE CHELSEA MANOR GARDENS



Total area (approx.): 87.9 sq. m (947.0 sq. ft)
Balcony area (approx.): 2.9 sq. m (32.0 sq. ft)

Chelsea
020 7591 5580

Energy Rating: C We aim to make our particulars both accurate and reliable. However, they are not guaranteed; nor do they form part of an offer or contract. If you require clarification on any points then please contact us, especially if you're traveling some distance to view. Please note that appliances and heating systems have not been tested and therefore no warranties can be given as to their good working order

MARSH &
PARSONS