



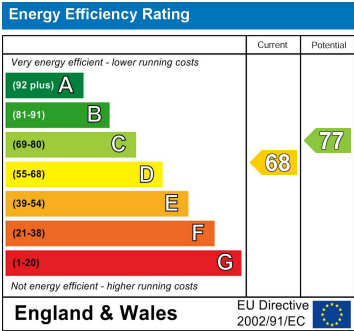
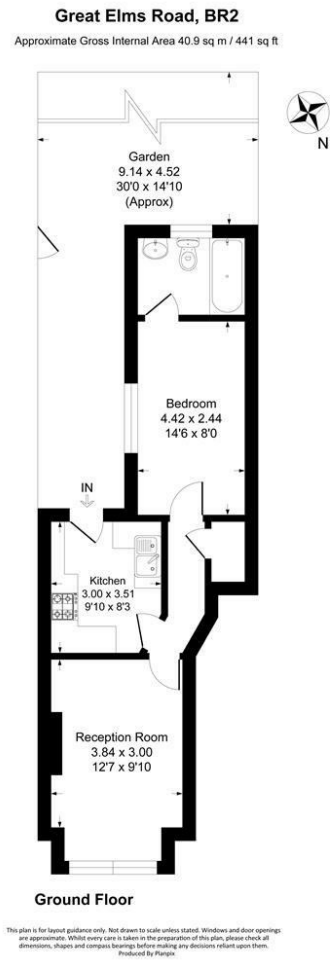
ASKING PRICE

£300,000

Great Elms Road

Bromley, BR2 9NF

EPC RATING: D COUNCIL TAX BAND: C



Agents Note: Whilst every care has been taken to prepare these particulars, they are for guidance purposes only. All measurements are approximate and are for general guidance purposes only and whilst every care has been taken to ensure their accuracy, they should not be relied upon and potential buyers/tenants are advised to recheck the measurements



OFFICE ADDRESS
23 High Street
Bromley
Kent
BR1 1LG

OFFICE DETAILS
0208 464 5566
info@sinclairhammelton.co.uk