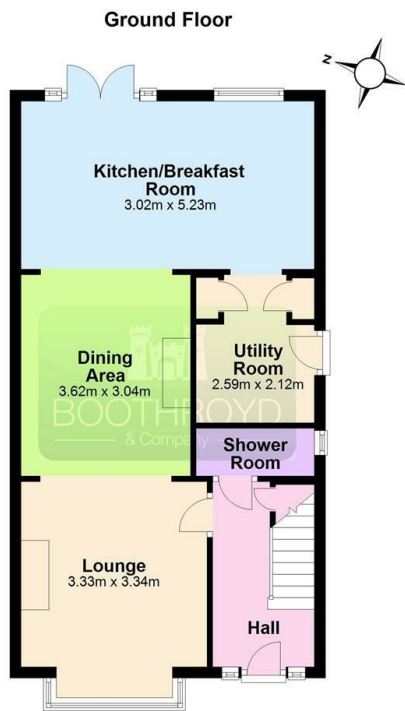




2 Bertie Road, Kenilworth, CV8 1JP

£575,000

- Four Bedroom Detached House
- Energy Rating E - 44
- Luxury Refitted Open Plan Kitchen
- Warwick District Council Tax Band E
- Convenient Town Centre Location
- Through Extended Lounge/Dining Room
- Attractive Rear Garden & Driveway Parking
- Offered For Sale With No Onward Chain
- Four Bedrooms & Three Bathrooms On Three Floors
- Gas Central Heating & Double Glazing



Total area: approx. 111.7 sq. metres



Directions

Viewings

Viewings by arrangement only. Call 01926 857244 to make an appointment.

Council Tax Band

E

EPC Rating:

E

Energy Efficiency Rating		Current	Potential
<i>Very energy efficient - lower running costs</i>			
(92 plus)	A		
(81-91)	B		
(69-80)	C		79
(55-68)	D		
(39-54)	E	44	
(21-38)	F		
(1-20)	G		
<i>Not energy efficient - higher running costs</i>			
England & Wales		EU Directive 2002/91/EC	