



39, Wingfield Gardens, Shrewsbury, SY1 4BT
£850 Per Month



39, Wingfield Gardens, Shrewsbury, SY1 4BT

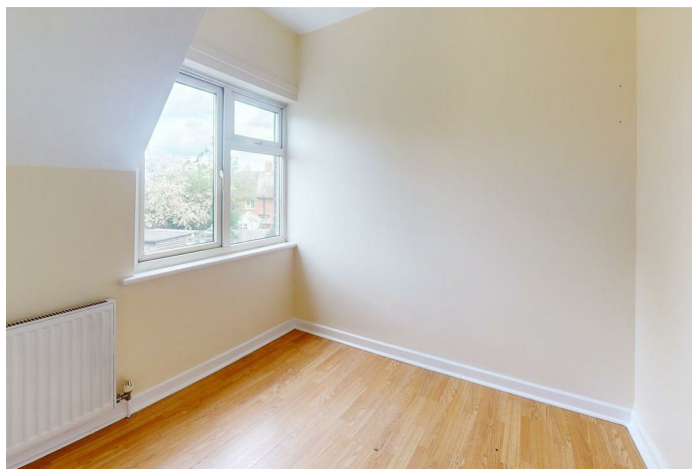
£850 Per Month

VIRTUAL TOUR AVAILABLE - Occupying a pleasant position, this is a deceptively spacious and improved three bedroom mid-terrace house. The property has a generous sized bay fronted lounge, modern kitchen / breakfast room, modern bathroom, large rear gardens and a pleasing outlook towards the local green. The property is conveniently situated for access to a variety of local amenities and within walking distance to the Shrewsbury town centre.

Available: 11/05/2026

Description

Entrance hallway, bay fronted lounge, inner hallway, re-fitted kitchen / breakfast room with integrated oven/hob and space for appliances, re-fitted ground floor bathroom with shower over bath. Stairs to first floor landing, three bedrooms, WC. Large gardens, a substantial detached timber workshop with adjoining shed. UPVC double glazing, gas fired central heating. EPC C



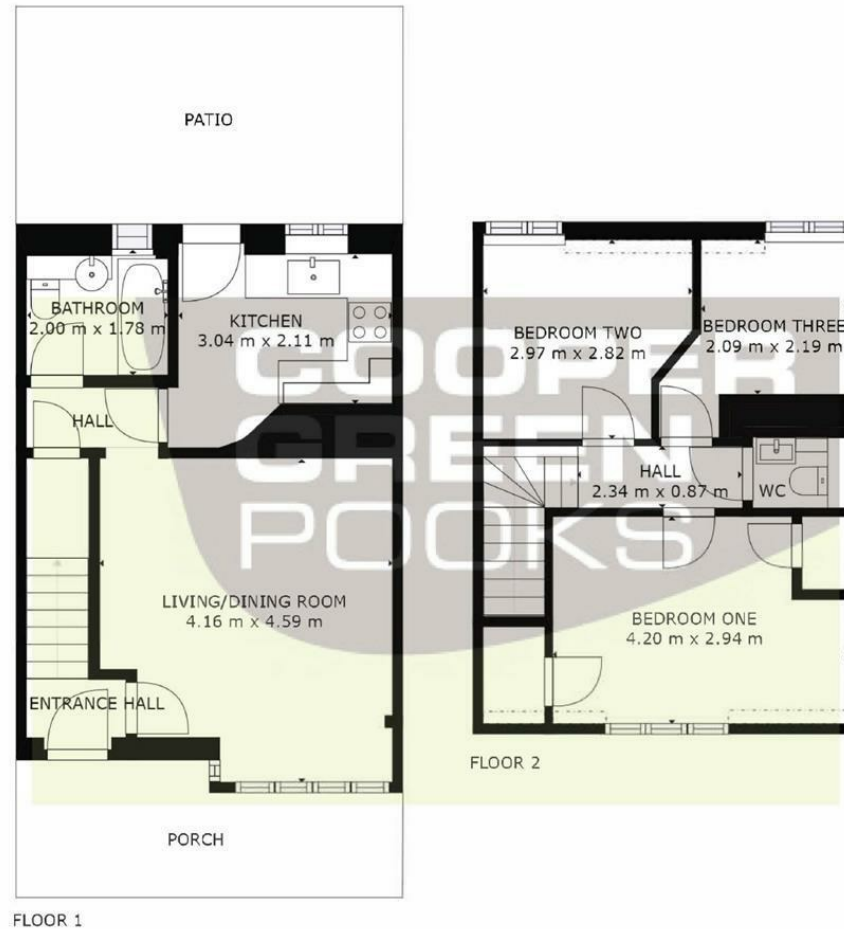
Unfurnished

Council Tax Band: B

Available: 11th May 2026

EPC: C

Floor Plans



GROSS INTERNAL AREA
FLOOR 1: 38 m², FLOOR 2: 35 m²
EXCLUDED AREAS: , REDUCED HEADROOM BELOW 1.5M: 1 m²
TOTAL: 73 m²
SIZES AND DIMENSIONS ARE APPROXIMATE, ACTUAL MAY VARY.



These particulars, whilst believed to be accurate are set out as a general outline only for guidance and do not constitute any part of an offer or contract. Intending purchasers should not rely on them as statements of representation of fact, but must satisfy themselves by inspection or otherwise as to their accuracy. No person in this firm's employment has the authority to make or give any representation or warranty in respect of the property.