

Chestnut House, Knighton Drive, Stoneygate

£130,000

Located on the tree-lined Knighton Drive is this purpose-built SECOND FLOOR apartment in Chestnut House. The property is offered to the market with NO UPWARD CHAIN and includes ONE BEDROOM.

Council Tax band: A

Tenure: Leasehold

EPC Energy Efficiency Rating: E



0116 274 5544





Communal Entrance Hall

With intercom, stairs.

Entrance Hall

With built-in cupboard.

Lounge

14' 4" x 11' 4" (4.38m x 3.46m)

With double glazed window to the front elevation, ceiling coving, electric heater.

Kitchen

8' 10" x 6' 9" (2.68m x 2.07m)

With double glazed window to the side elevation, ceramic tiled floor, a range of wall and base units with work surface over, stainless steel sink and drainer, electric cooker point, space for fridge, space for freezer, space for washing machine, part tiled walls.



Bedroom

10' 10" x 11' 6" (3.30m x 3.51m)

With double glazed window to the front elevation, electric heater.

Bathroom

6' 5" x 6' 2" (1.96m x 1.89m)

With corner bath, shower over and shower screen, low-level WC, wash hand basin with storage below, part tiled walls, electric warm air heater.

Communal Garden

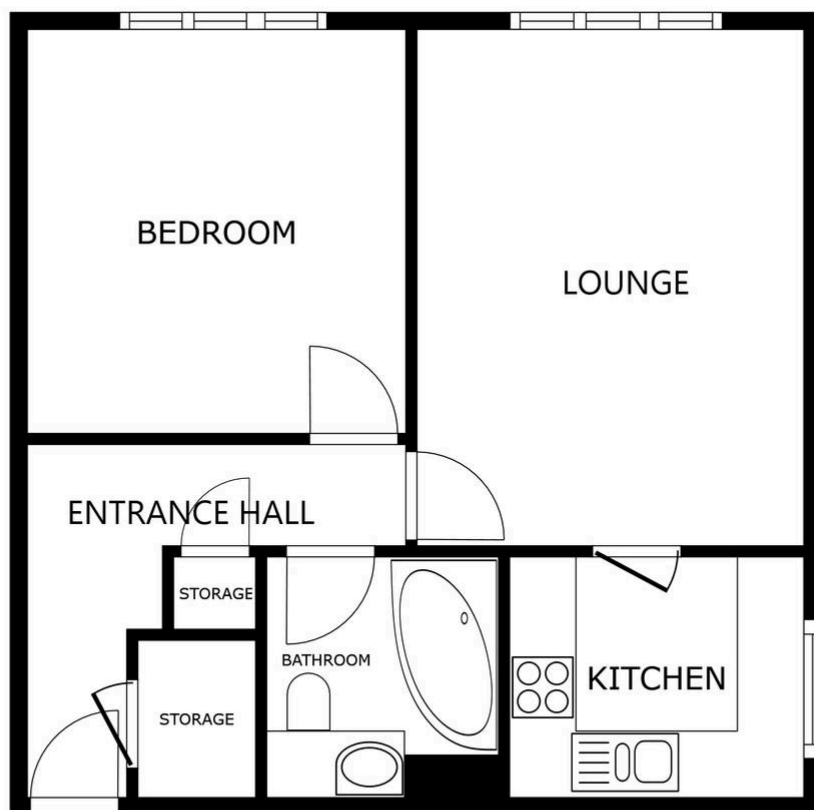
Communal grounds with a dedicated brick storage shed within the garden.

Communal Parking

Lease Details

Current Service Charge: £97 per month

Length of Lease: 89 years remaining



FLOOR PLAN

SIZES AND DIMENSIONS ARE APPROXIMATE, ACTUAL MAY VARY.



We'll keep you moving...



We must inform all prospective purchasers that the measurements are taken by an electronic tape and are provided as a guide only and they should not be used as accurate measurements. We have not tested any mains services, gas or electric appliances, or fixtures and fittings mentioned in these details, therefore, prospective purchasers should satisfy themselves before committing to purchase. Intending purchasers must satisfy themselves by inspection or otherwise to the correctness of the statements contained in these particulars. Knightsbridge Estate Agents & valuers (nor any person in their employment) has any authority to make any representation or warranty in relation to the property. The floor plans are not to scale, and are intended for use as a guide to the layout of the property only. They should not be used for any other purpose. Similarly, the plans are not designed to represent the actual décor found at the property in respect of flooring, wall coverings or fixtures and fittings.