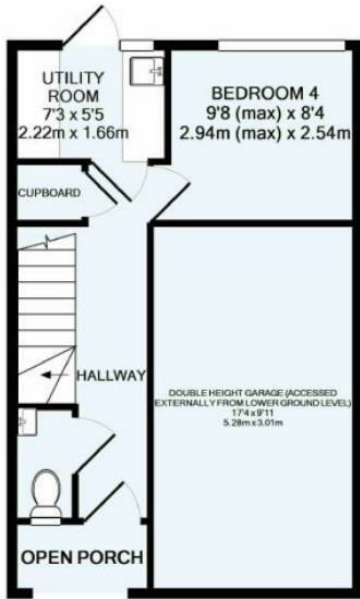


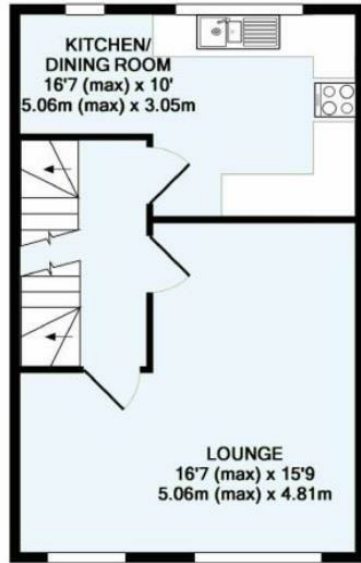
11 Spindlewood Gardens, Croydon, CR0 5SE

Offers In Excess Of £520,000

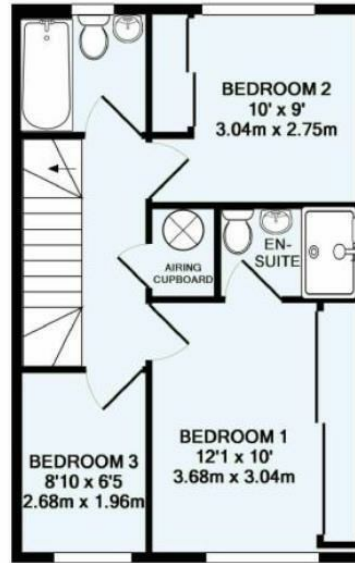
- 4 Bedrooms
- Great Location
- Within Easy Reach Of Lloyd Park
- NO CHAIN
- Garage
- En - Suite to Master Bedroom
- Set Over 3 Floors
- Off Street Parking
- Close To East Croydon BR
- Cloakroom



GROUND FLOOR
APPROX. FLOOR
AREA 414 SQ.FT.
(38.5 SQ.M.)

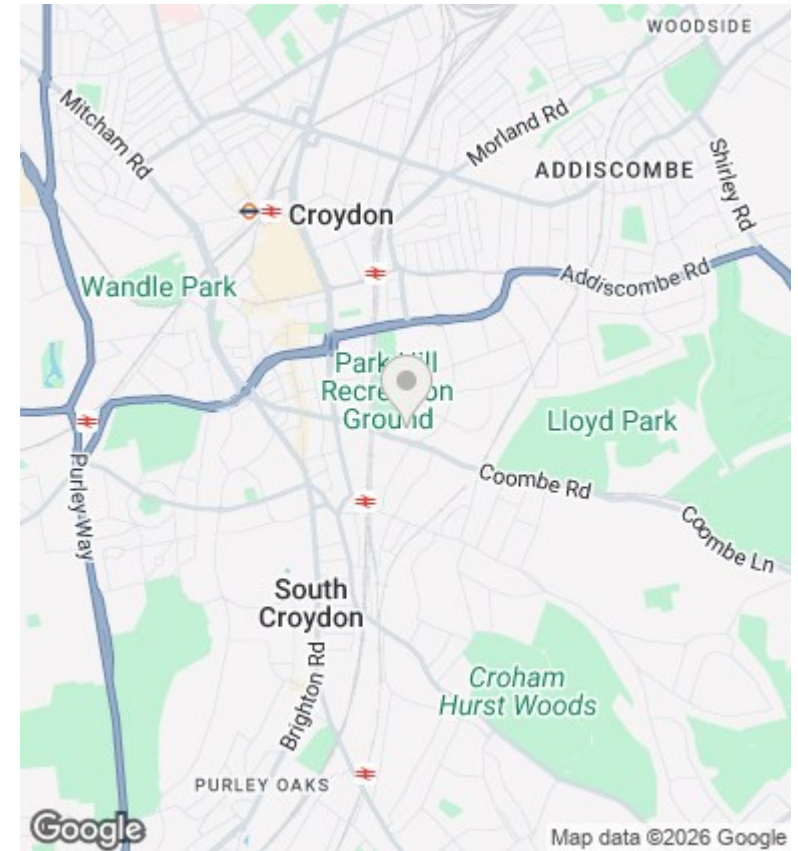


1ST FLOOR
APPROX. FLOOR
AREA 414 SQ.FT.
(38.5 SQ.M.)



2ND FLOOR
APPROX. FLOOR
AREA 413 SQ.FT.
(38.4 SQ.M.)

TOTAL APPROX. FLOOR AREA 1241 SQ.FT. (115.3 SQ.M.)



Directions

Viewings

Viewings by arrangement only. Call 0208 681 8133 to make an appointment.

Council Tax Band

E

EPC Rating:

D

Energy Efficiency Rating		
	Current	Potential
<i>Very energy efficient - lower running costs</i>		
(92 plus) A		
(81-91) B		
(69-80) C		
(55-68) D	68	
(39-54) E		
(21-38) F		
(1-20) G		
<i>Not energy efficient - higher running costs</i>		
England & Wales	EU Directive 2002/91/EC	