



Price

£200,000

Leasehold

1x  1x  1x 

**Batworth Park House,
Crossbush, Arundel,
West Sussex BN18**

cubitt&west
Helping you move forwards

Accommodation

SECOND FLOOR

Entrance Hall

Lounge/ Diner : 19'1 x 14'3 (5.82m x 4.35m)

Cloakroom

Kitchen : 11'6 x 9'0 (3.51m x 2.75m)

Bedroom : 16'9 maximum x 12'6 (5.11m x 3.81m)

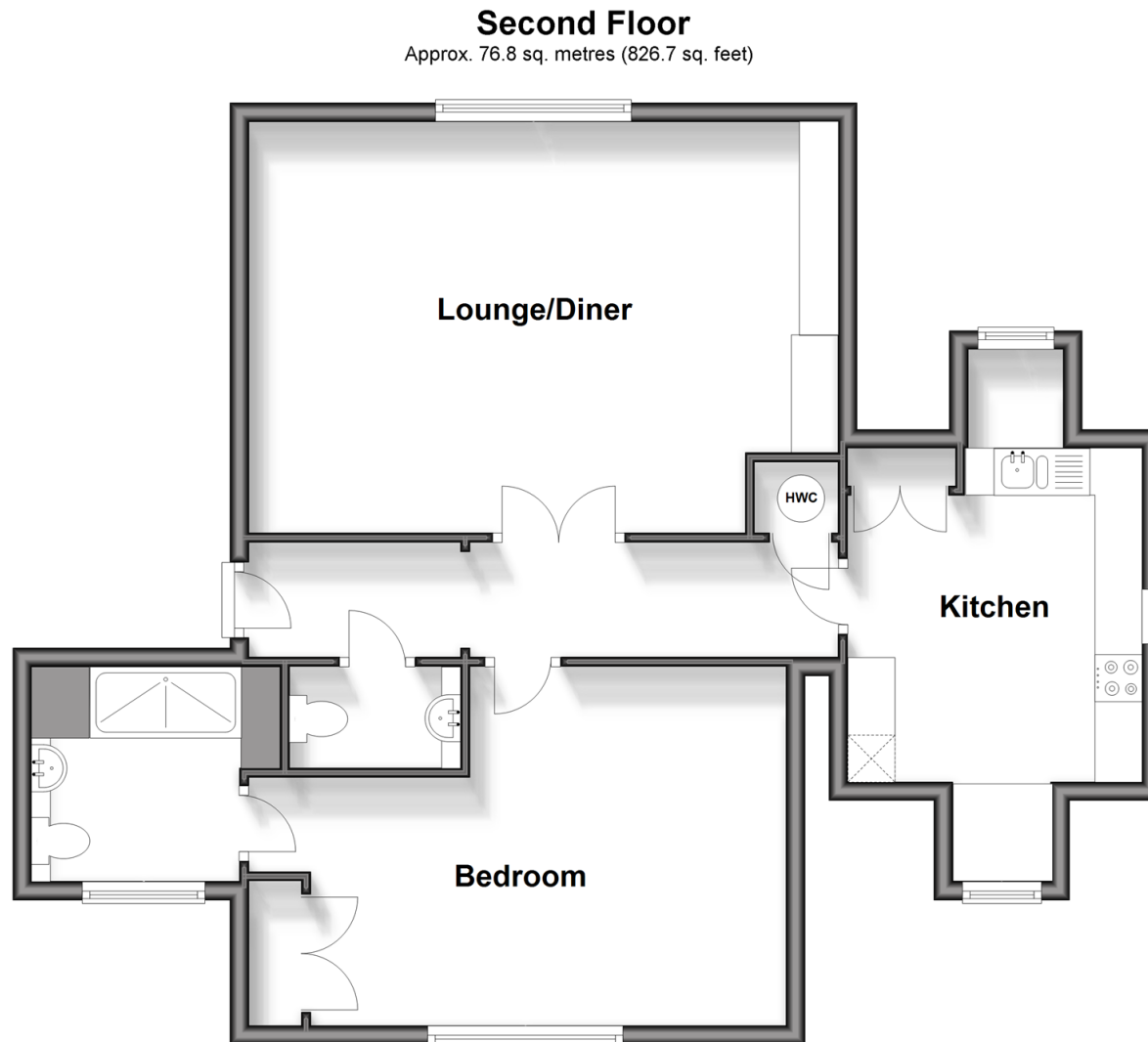
En Suite Shower Room : 7'5 x 7'2 (2.26m x 2.19m)

OUTSIDE

Communal Grounds

Residents and Visitors Parking

Garage





Main features

- Stunning age restricted 2nd floor apartment in elegant converted Victorian Manor House
- Panoramic views of rolling verdant countryside
- Generous lounge/ diner with high ceilings and a bright aspect
- Set in elevated position in beautiful managed grounds in a quiet semi-rural spot
- Just outside the historic market town of Arundel



Nearest Schools

Further Education: West Dean Arts, Design and Craft College, Northbrook College, Chichester University all close by



Transport Information

Train Stations: Arundel 0.5 miles, Ford 3.1 miles, Littlehampton 3.4 miles



Address

Batworth Park House, Crossbush, Arundel, West Sussex BN18



Directions

For directions to this property please contact us.



cubitt&west
Helping you move forwards

Call Arundel Branch 01903 884420 ■ cubittandwest.co.uk



■ Legal advice should be taken to verify fixtures/fittings, planning, alterations and/or lease details ■ Appliances & services are untested, dimensions are approximate and floor plans are not to scale



23217704/20250807/RH/DW