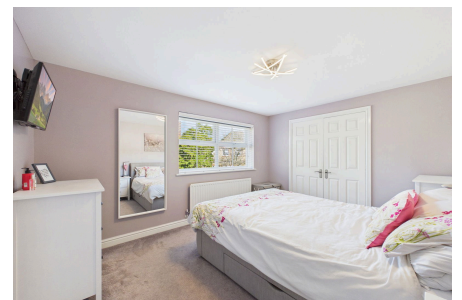


## Hazel Close, Southwater

£775,000

🛏 4 🚿 2 🚗 2

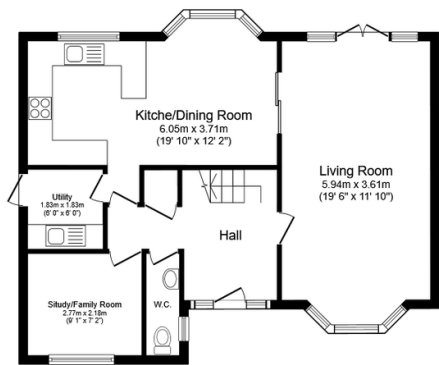


A beautifully presented Detached Family Home located towards the end of a Small Cul De Sac, boasting a 19ft Refitted Kitchen Dining Area an En Suite to Principal Bedroom and a Double Garage.

Tenure: Freehold  
Council Tax Band: F  
EPC: Current D - Potential B

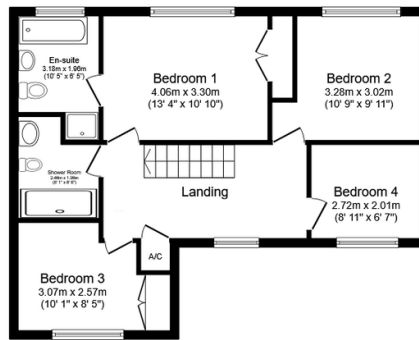
## Key Features

- Watch Our Video Tour
- Open Plan Living
- Beautifully Presented Throughout
- Popular Village Location
- Detached Double Garage
- 19'10 Kitchen/ Dining Room
- Four Generous Bedrooms
- En Suite to Main Bedroom
- 19'6 Separate Living Room
- Close to Popular Schools



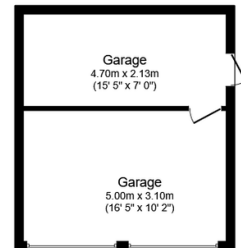
**Ground Floor**

Floor area 68.2 sq.m. (734 sq.ft.)



**First Floor**

Floor area 60.8 sq.m. (654 sq.ft.)



**Garage**

Floor area 27.0 sq.m. (291 sq.ft.)

**Total floor area: 156.0 sq.m. (1,679 sq.ft.)**

This floor plan is for illustrative purposes only. It is not drawn to scale. Any measurements, floor areas (including any total floor area), openings and orientations are approximate. No details are guaranteed, they cannot be relied upon for any purpose and do not form any part of any agreement. No liability is taken for any error, omission or misstatement. A party must rely upon its own inspection(s). Powered by [www.Propertybox.io](http://www.Propertybox.io)