

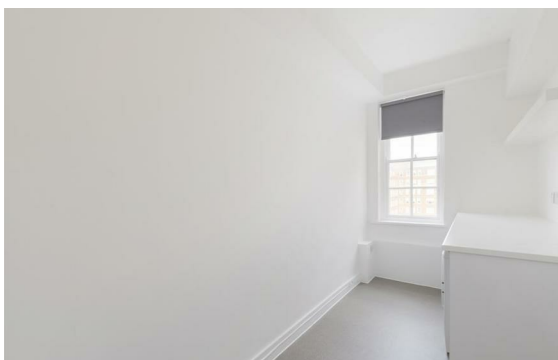
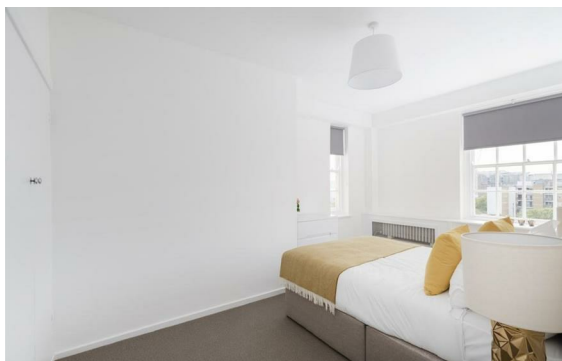


Edgware Road, Paddington, London, W2

Rent £1,500 Per Month

4 Bed | 3 Bath | 1 Reception

Please call us on 020 7724 2233 or email us info@newingtonstates.com to book a viewing.



60 Upper Montagu Street

London

W1H 1SN

020 7724 2233

info@newingtonstates.com

A spacious four-bedroom apartment comprises a generous reception room, a separate fully fitted kitchen, and four well-proportioned double bedrooms. There is a family bathroom, an additional shower room, and an en-suite shower room, providing flexible and practical accommodation for families or sharers. The apartment further benefits from a private balcony and a clean, contemporary finish throughout.

Residents enjoy the convenience of a 24-hour concierge service, while the property is ideally located close to the open green spaces of Hyde Park and within easy reach of Marble Arch Station, offering excellent connectivity across London.

EPC rating: C

Energy Efficiency Rating: C

Agents Note: Whilst every care has been taken to prepare these particulars, they are for guidance purposes only. All measurements are approximate and are for general guidance purposes only and whilst every care has been taken to ensure their accuracy, they should not be relied upon and potential buyers/tenants are advised to recheck the measurements.

<http://www.newingtonstates.com>