



35 Tutbury Hollow , Ashbourne, DE6 1TD

Situated within a desirable cul-de-sac location in the sought-after area of Tutbury Hollow, this exceptional five-bedroom detached family home offers spacious and versatile accommodation arranged over three floors, complemented by ample off-road parking, a detached double garage, and beautifully landscaped rear gardens.

Finished to a high standard throughout, the property benefits from UPVC double glazing and gas central heating, and briefly comprises a welcoming entrance hallway, guest cloakroom/WC, spacious dual-aspect lounge, separate study ideal for remote working, and an impressive open-plan living dining kitchen forming the heart of the home. The contemporary kitchen is fitted with granite work surfaces, breakfast bar, and a full range of integrated appliances including double oven, microwave, dishwasher, wine cooler, fridge and freezer. A separate utility room provides additional storage and appliance space.

To the first floor are four well-proportioned bedrooms, including two generous doubles with stylish en suite shower rooms, together with a modern four-piece family bathroom featuring a separate double shower. The second floor is dedicated to the luxurious master suite, boasting a spacious dual-aspect bedroom, bespoke fitted dressing area, and an elegant four-piece en suite bathroom with twin vanity basins, bath, and separate

£600,000

35 Tutbury Hollow

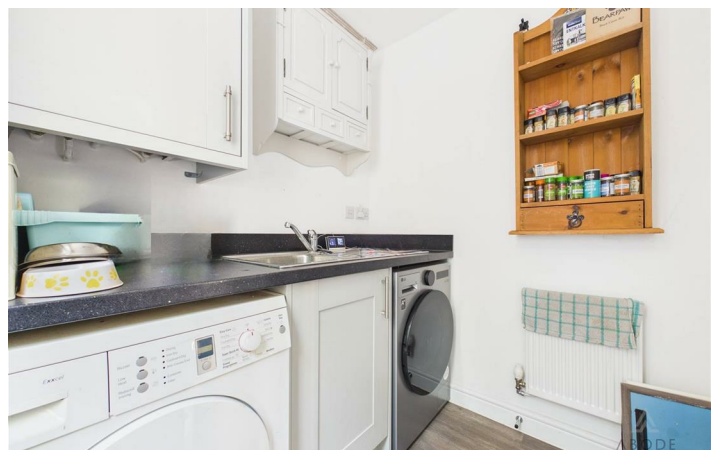
, Ashbourne, DE6 1TD



- | | |
|-----------------------|----------------------|
| Hallway | Bedroom Four |
| Study | Bedroom Five |
| Lounge | Family Bathroom |
| Cloakroom/W.C. | Second Floor Landing |
| Living/Dining Kitchen | Bedroom One |
| Utility Room | En-suite |
| Landing | |
| Bedroom Two | |
| En-suite | |
| Bedroom Three | |
| En-suite | |



[Directions](#)



Floor Plan



These particulars, whilst believed to be accurate are set out as a general outline only for guidance and do not constitute any part of an offer or contract. Intending purchasers should not rely on them as statements of representation of fact, but must satisfy themselves by inspection or otherwise as to their accuracy. No person in this firm's employment has the authority to make or give any representation or warranty in respect of the property.

