



Windrush, Highworth, SN6 7ED

£220,000
(Subject to Contract)

Hanley's

Windrush Highworth SN6 7ED

Situated in a popular location, a short walk from the High Street this three bedroom semi-detached house is offered for sale with NO ONWARD CHAIN. Offering scope to update/improve, the accommodation comprises, entrance hall with stairs to the first floor, living/dining room, kitchen with fitted electric oven, fridge and washing machine. Door from the kitchen opens to the rear garden. To the first floor: landing with airing cupboard housing gas fired boiler, access to the loft space, three bedrooms and bathroom with shower over. Outside to the rear is an enclosed garden and a covered side access leading to the front with garden and path to the front door. A single garage is located in a block close-by with some work required. The property benefits from double glazing and gas radiator central heating.



1 Bathroom



3 Bedrooms



2 Receptions

EPC: TBA

Council Tax Band: B

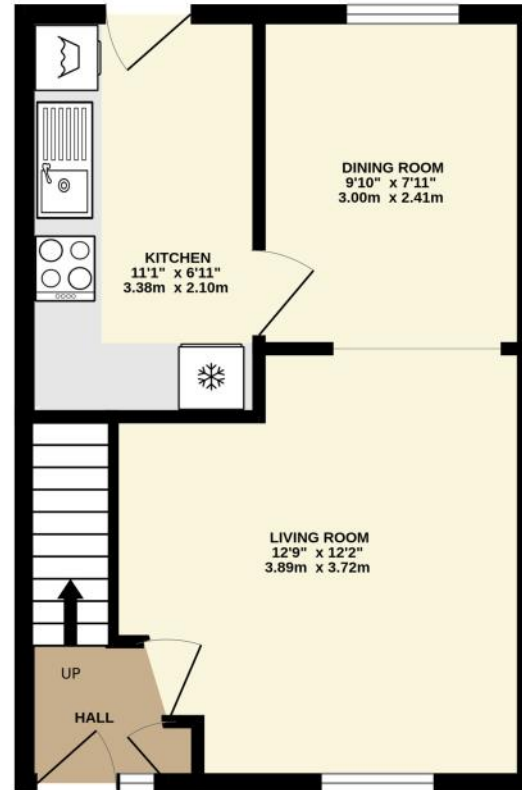
Tenure: Freehold



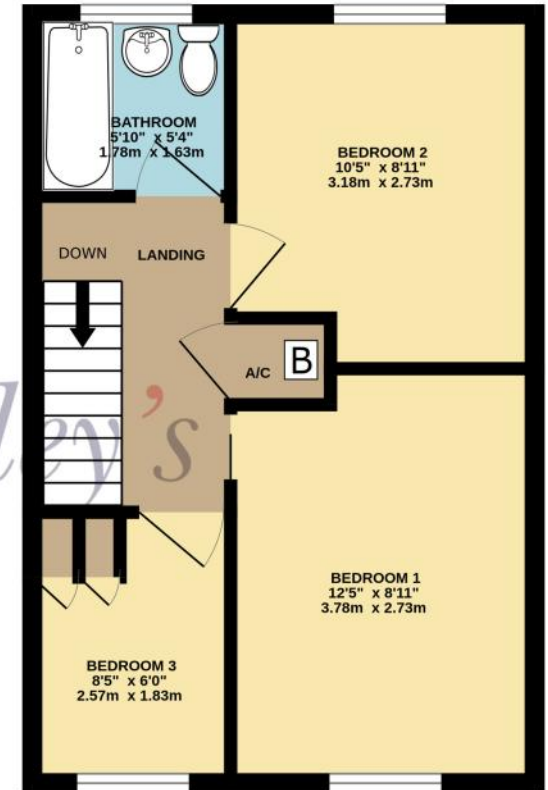
DISCLAIMER. These particulars, whilst believed to be accurate are set out as a general outline for guidance and do not constitute any part of an offer or contract. Intending purchasers should not rely on them as statements or representation of fact, but must satisfy themselves by inspection or otherwise as to their accuracy. No person in this firm's employment has the authority to make or give any representation or warranty in respect of the property. Floor plan measurements and distances are approximate only. We have not carried out a detailed survey nor tested the services, appliances or specific fittings. Your home is at risk if you do not keep up repayments on a mortgage or other loan secured on it.



GROUND FLOOR
335 sq.ft. (31.1 sq.m.) approx.



1ST FLOOR
335 sq.ft. (31.1 sq.m.) approx.



TOTAL FLOOR AREA : 669 sq.ft. (62.2 sq.m.) approx.

Whilst every attempt has been made to ensure the accuracy of the floorplan contained here, measurements of doors, windows, rooms and any other items are approximate and no responsibility is taken for any error, omission or mis-statement. This plan is for illustrative purposes only and should be used as such by any prospective purchaser. The services, systems and appliances shown have not been tested and no guarantee as to their operability or efficiency can be given.
Made with Metropix ©2026

Hanley's Estate Agents
25 High Street, Highworth, SN6 7AG
Tel: 01793 762005 mail@hanleys.co.uk

