



20 Waterpark Road Doveridge, DE6 5NU

A well-presented two-bedroom semi-detached house situated in the sought-after village of Doveridge, conveniently located near Ashbourne and offering comfortable accommodation throughout.

The property comprises an entrance hallway leading to a fitted kitchen and a spacious living room featuring an attractive open fireplace, creating a warm and welcoming focal point.

To the first floor are two bedrooms, including one double bedroom and one single bedroom, together with a family bathroom.

Additional benefits include electric room heaters, double glazing throughout, off-road parking, and an enclosed, secure rear garden, ideal for outdoor relaxation and suitable for families.

Located in the popular village of Doveridge, the property enjoys easy access to local amenities, transport links, and the surrounding Derbyshire countryside.

£875 PCM

20 Waterpark Road

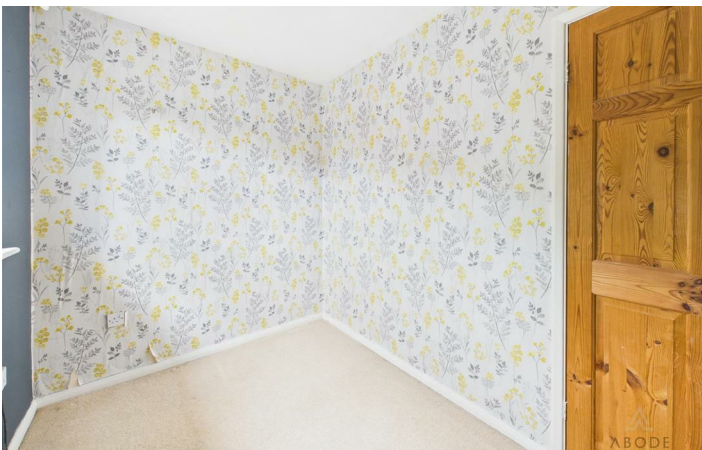
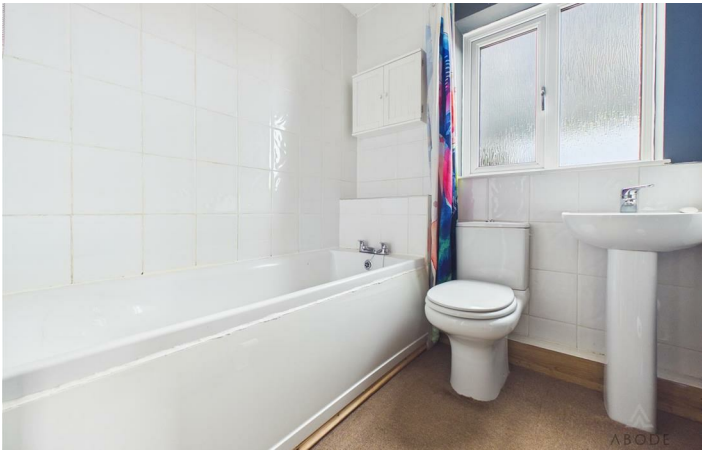
Doveridge, DE6 5NU



- Semi-detached house
- Fitted kitchen
- Electric room heaters & Double glazing
- Popular village location in Doveridge, near Ashbourne
- Two bedrooms (one double, one single)
- Living room with open fire
- Off-road parking
- Entrance hallway
- Family bathroom
- Enclosed and secure rear garden



[Directions](#)



Floor Plan



These particulars, whilst believed to be accurate are set out as a general outline only for guidance and do not constitute any part of an offer or contract. Intending purchasers should not rely on them as statements of representation of fact, but must satisfy themselves by inspection or otherwise as to their accuracy. No person in this firm's employment has the authority to make or give any representation or warranty in respect of the property.

2 Market Place, Ashbourne, Derbyshire, DE6 1ES
Tel: 01283 845888 Email: lettings@abodemidlands.co.uk

