



Brindley Place, Uxbridge, UB8 2FA

- EPC Rating - B
- Parking offered
- Underfloor heating
- Ideal for professionals
- Corner apartment
- Stunningly furnished
- 7am - 7pm concierge
- Available mid July 2026
- Canal-side unit
- Largest unit in the development

£1,495 PCM

Cameron Estate Agents
195 High Street,
Middlesex, Uxbridge, UB8 1LB

E: uxbridge@cameron.co
T: 01895252000

www.cameron.co

arla | propertymark

PROTECTED

naea | propertymark

PROTECTED

Whilst every care has been taken to ensure the accuracy of these particulars, none of the statements contained herein are to be relied upon as representations of fact. These particulars do not constitute an offer or contract.

Description

Cameron are delighted to bring to the market to this TRULY STUNNING, one bedroom apartment located in very popular Jessop Court building.

The accommodation on offer briefly comprises, entrance hall with storage cupboard home to the washing machine, spacious open plan reception room leading to a balcony giving superb views of the canal, the kitchen is fitted with a range of storage units with all integrated appliances and stone work surfaces. The spacious bedroom has a large built-in wardrobe and there is also a separate shower-room with heated towel rail.

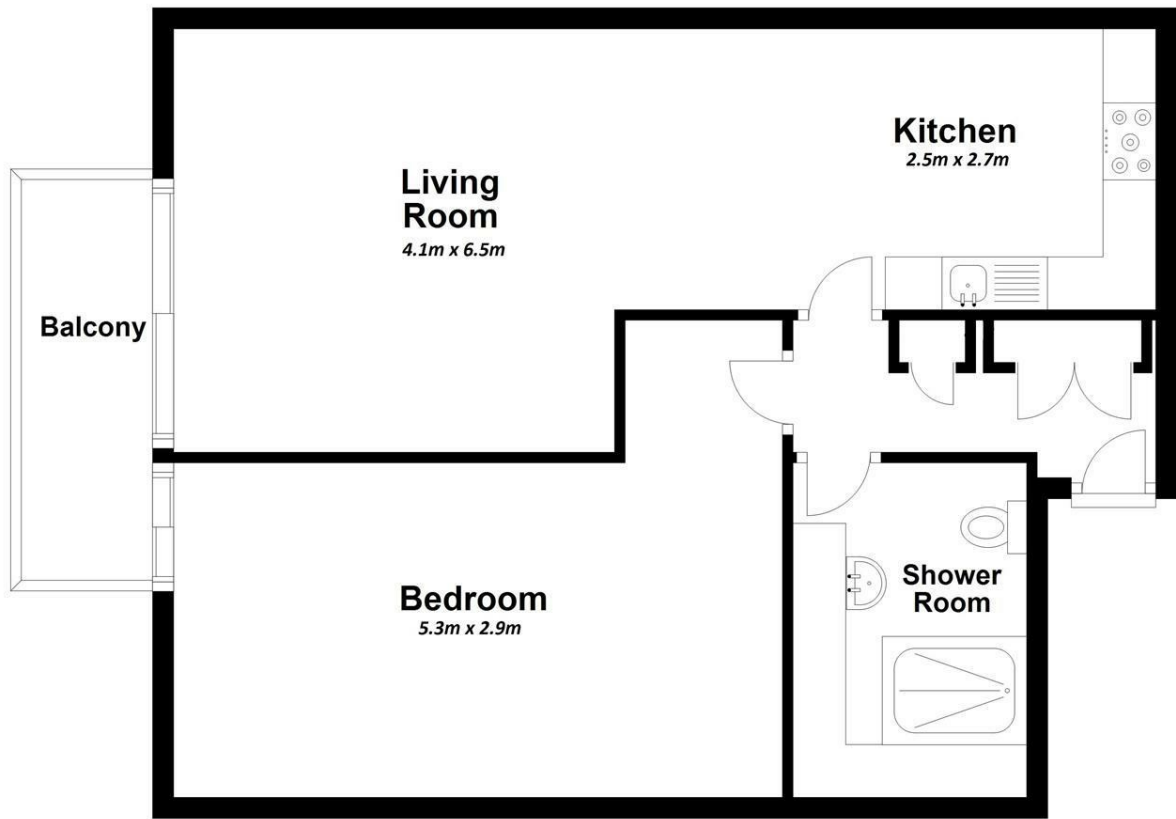
This apartment is immaculately presented throughout and furnished to a very high standard.. this is one not to be missed. Located moments from bus stops, local supermarkets, major road links, Heathrow airport and West Drayton Station offering the Elizabeth Line into central London in 21 minutes. Available to move-in Mid July 2026, suitable for professionals or students, furnished.

IMPORTANT NOTICE

These particulars have been prepared upon information supplied by the Vendor and should be verified by your surveyors and solicitors. In accordance with the Property Misdescriptions Act 1991 we have prepared these sales particulars as a general guide to give a broad description of the property. They are not intended to constitute part of an offer or contract. We have not carried out a structural survey and the services, appliances and specific fittings have not been tested. All photographs, measurements, floor plans and distances referred to are given as a guide only and should not be relied upon for the purchase of carpets or any other fixtures or fittings. Lease details service charge and ground rent (where applicable) are given as a guide only and should be checked and confirmed by your solicitor prior to exchange of contract

First Floor

Approx. 59.3 sq. metres (638.3 sq. feet)



Total area: approx. 59.3 sq. metres (638.3 sq. feet)

Cameron



Whilst every care has been taken to ensure the accuracy of these particulars, none of the statements contained herein are to be relied upon as representations of fact. These particulars do not constitute an offer or contract.