

Ditton Lawn, Portsmouth Road, Thames Ditton, KT7

£380,000 Share of Freehold

2 Bedrooms | 1 Bathrooms | 1 Reception

IVY GATE™



Summary:

Ground floor maisonette. Positioned well in a quiet location in the highly regarded development of Ditton Lawn. This light and spacious flat comprises, private front door, long entrance hallway, large reception room with relaxing views over the well-manicured communal gardens. The kitchen boasts lovely viewings and direct access to the gardens, family bathroom newly done with large walk-in shower. large master bedroom, further smaller double bedroom. beautifully maintained communal gardens. parking in development.

Two double bedroomed Maisonette

Well maintained Development

Share of Freehold over 900years left on lease

Close to Village and Thames Ditton Station

Ground floor with direct access to garden

Parking in development

Ditton Lawn, Portsmouth Road, Thames Ditton, KT7

£380,000 Share of Freehold

2 Bedrooms | 1 Bathrooms | 1 Reception

IVY GATE™

Two double bedroomed Maisonette

Well maintained Development

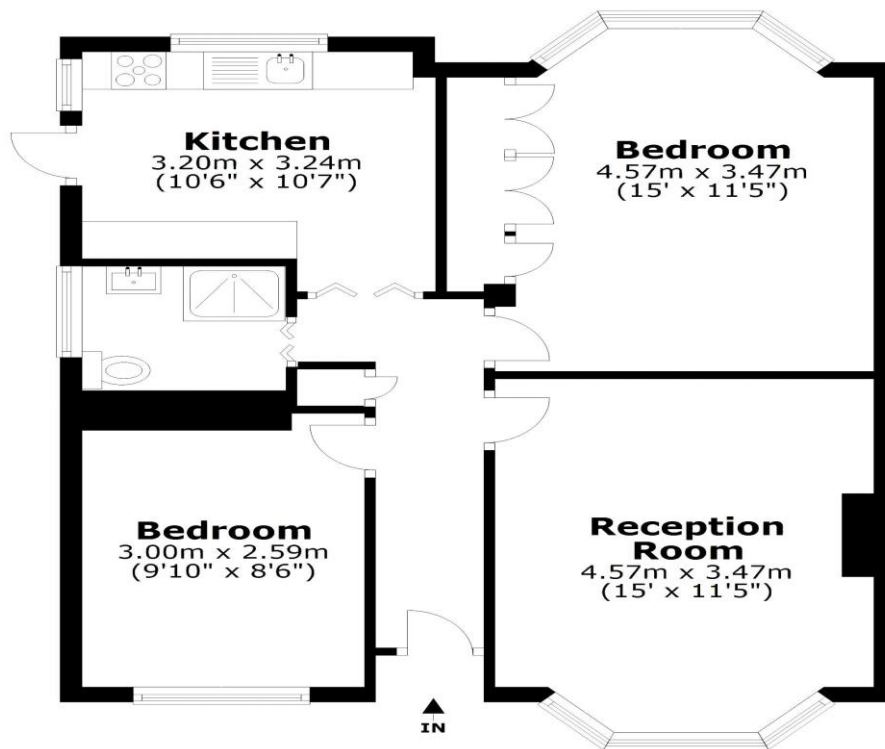
Share of Freehold over 900years left on lease

Close to Village and Thames Ditton Station

Ground floor with direct access to garden

Parking in development

Ground Floor



Total area: approx. 61.8 sq. metres (665.1 sq. feet)

Tenure: Share of Freehold

Council Tax: D

Local Authority:

EPC Rating: D

MONEY LAUNDERING REGULATIONS 2003

Intending purchasers will be asked to produce identification and proof of financial status when an offer is received. We would ask for your co-operation in order that there will be no delay in the offer process.

THE PROPERTY MISDESCRIPTIONS ACT 1991

The agent has not tested any apparatus, equipment, fixtures and fittings or services and so cannot verify that they are in working order or fit for the purpose. A Buyer is advised to obtain verification from their Solicitor or Surveyor. References to the Tenure of a Property are based on information supplied by the Seller. The Agent has not had sight of the title documents. The mention of any appliances and services within these details does not imply that they are in full and efficient working order. These particulars are intended as a guide and act as information to prospective buyers. They are not an offer or contract, or part of one. All details, areas, measurements floorplans and distances referred to are given as a guide only and should not be relied upon, they are approximate and illustrative only and **not to scale**. Lease details, service charges and ground rent (where applicable) are given as a guide only and the agent has not had sight of the original documentation, they should be checked by your solicitor prior to exchange of contracts.