

SNELLERS

ESTATE AGENTS



Heatherdale Close, KT2

£3,195 PCM

Overlooking Richmond Park, this spacious family home with over 1,500 sq.ft of living accommodation has a fitted kitchen/breakfast room with doors to private garden, master bedroom with en suite shower room, three further bedrooms, off street parking and a garage.



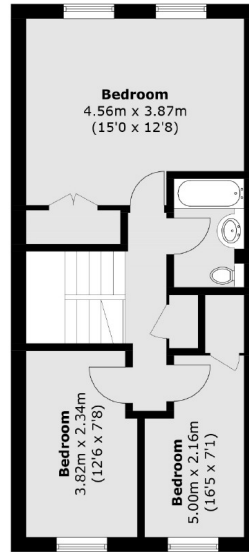
A town house on the slopes of Kingston Hill backing onto Richmond Park, with easy access to Norbiton train station and high street.

- Four Bedrooms • Two Bathrooms • Downstairs W/C •
- Private Garage • Close To Richmond Park • Driveway •

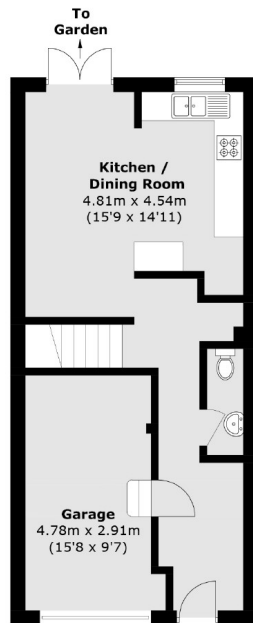


SNELLERS

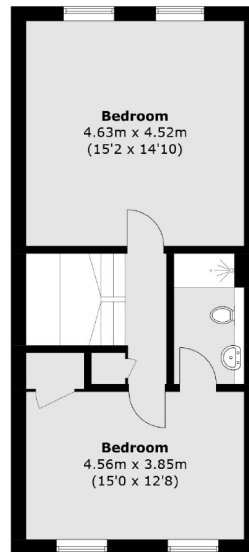
ESTATE AGENTS



Second Floor



Ground Floor



First Floor

Total area (approx.): 144.7 sq. m (1,557.4 sq. ft)

Snellers Kingston Lettings
17-21 Richmond Road
Kingston
KT2 5BW
020 8546 0505
kingstonlettings@snellers.co.uk

Energy Rating: D We aim to make our particulars both accurate and reliable. However they are not guaranteed; nor do they form part of an offer or contract. If you require clarification on any points then please contact us, especially if you're traveling some distance to view. Please note that appliances and heating systems have not been tested and therefore no warranties can be given as to their good working order