



Connells

Roxeth Green Avenue
HARROW



Property Description

Extended Three-Bedroom Semi-Detached | Sought-After Harrow Location | Further Potential (STPP)

A beautifully extended three-bedroom semi-detached family home, offering bright, spacious interiors and superb potential to grow further (STPP), set within a highly desirable Harrow location.

The ground floor boasts two generous reception rooms, perfect for modern family living and entertaining, alongside a well-designed kitchen with direct access to a private rear garden—ideal for summer dining and relaxation.

Upstairs features three well-proportioned bedrooms and a stylish family bathroom, all enhanced by excellent natural light throughout.

Externally, the property benefits from a secluded rear garden, off-street parking, and a garage, adding both practicality and future scope.

Perfectly positioned close to popular schools, local amenities, and excellent transport links, this is a fantastic opportunity to secure a home with space, location, and clear potential to add further value.

Early viewing advised.

Extended Three-Bedroom Semi-Detached | Sought-After Harrow Location | Further Potential (STPP)

A beautifully extended three-bedroom semi-detached family home, offering bright, spacious interiors and superb potential to grow further (STPP), set within a highly desirable Harrow location.

The ground floor boasts two generous reception rooms, perfect for modern family living and entertaining, alongside a well-designed kitchen with direct access to a private rear garden—ideal for summer dining and relaxation.

Upstairs features three well-proportioned

bedrooms and a stylish family bathroom, all enhanced by excellent natural light throughout.

Externally, the property benefits from a secluded rear garden, off-street parking, and a garage, adding both practicality and future scope.

Perfectly positioned close to popular schools, local amenities, and excellent transport links, this is a fantastic opportunity to secure a home with space, location, and clear potential to add further value.

Early viewing advised.

Extended Three-Bedroom Semi-Detached | Sought-After Harrow Location | Further Potential (STPP)

A beautifully extended three-bedroom semi-detached family home, offering bright, spacious interiors and superb potential to grow further (STPP), set within a highly desirable Harrow location.

The ground floor boasts two generous reception rooms, perfect for modern family living and entertaining, alongside a well-designed kitchen with direct access to a private rear garden—ideal for summer dining and relaxation.

Upstairs features three well-proportioned bedrooms and a stylish family bathroom, all enhanced by excellent natural light throughout.

Externally, the property benefits from a secluded rear garden, off-street parking, and a garage, adding both practicality and future scope.

Perfectly positioned close to popular schools, local amenities, and excellent transport links, this is a fantastic opportunity to secure a home with space, location, and clear potential to add further value.

Early viewing advised.

Extended Three-Bedroom Semi-Detached |
Sought-After Harrow Location | Further
Potential (STPP)

A beautifully extended three-bedroom semi-detached family home, offering bright, spacious interiors and superb potential to grow further (STPP), set within a highly desirable Harrow location.

The ground floor boasts two generous reception rooms, perfect for modern family living and entertaining, alongside a well-designed kitchen with direct access to a private rear garden—ideal for summer dining and relaxation.

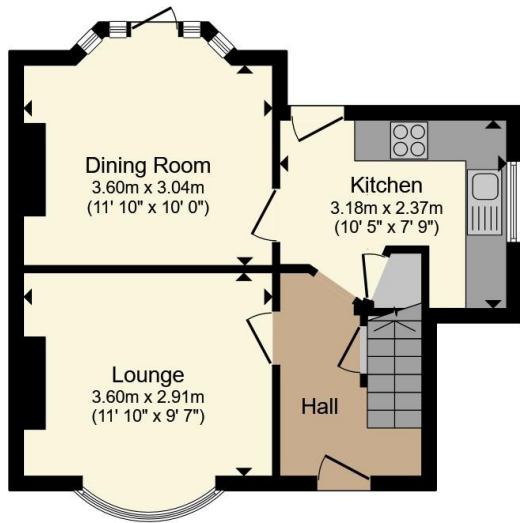
Upstairs features three well-proportioned bedrooms and a stylish family bathroom, all enhanced by excellent natural light throughout.

Externally, the property benefits from a secluded rear garden, off-street parking, and a garage, adding both practicality and future scope.

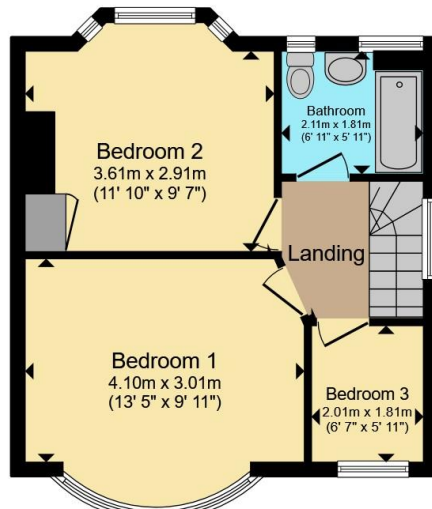
Perfectly positioned close to popular schools, local amenities, and excellent transport links, this is a fantastic opportunity to secure a home with space, location, and clear potential to add further value.

Early viewing advised.

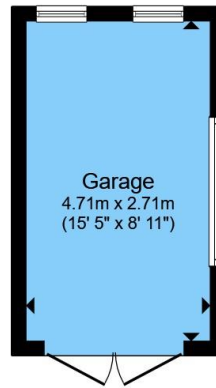




Ground Floor



First Floor



Garage



Total floor area 88.9 m² (957 sq.ft.) approx

This floor plan is for illustrative purposes only. It is not drawn to scale. Any measurements, floor areas (including any total floor area), openings and orientation are approximate. No details are guaranteed, they cannot be relied upon for any purpose and they do not form part of any agreement. No liability is taken for any error, omission or misstatement. A party must rely upon its own inspection(s). Powered by www.propertybox.io



To view this property please contact Connells on

T 020 8427 4321
E harrow@connells.co.uk

182 Station Road
 HARROW HA1 2RH

EPC Rating: D Council Tax
 Band: D

view this property online connells.co.uk/Property/HRW312463

Tenure: Freehold



1. MONEY LAUNDERING REGULATIONS Intending purchasers will be asked to produce identification documentation at a later stage and we would ask for your co-operation in order that there will be no delay in agreeing the sale. 2. These particulars do not constitute part or all of an offer or contract. 3. The measurements indicated are supplied for guidance only and as such must be considered incorrect. Potential buyers are advised to recheck measurements before committing to any expense. 4. We have not tested any apparatus, equipment, fixtures, fittings or services and it is in the buyers interest to check the working condition of any appliances.

Connells Residential is registered in England and Wales under company number 1489613, Registered Office is Cumbria House, 16-20 Hockliffe Street, Leighton Buzzard, Bedfordshire, LU7 1GN. VAT Registration Number is 500 2481 05.

See all our properties at www.connells.co.uk | www.rightmove.co.uk | www.zoopla.co.uk

Property Ref: HRW312463 - 0009