



AWARDED FOR
MARKETING | SERVICE | RESULTS



15 Hoylake Gardens, Watford

Fixed Price £475,000



 fairfieldestates



15 Hoylake Gardens

Watford, Watford

BEAUTIFULLY RENOVATED FAMILY HOME - A MUST SEE!

THIS STUNNING 3 BEDROOM BISF house has been recently renovated to offer stylish, modern living in a highly sought-after location.

From the porch, step inside to find an inviting entrance hall area leading to a spacious family lounge, seamlessly connected to a sleek open-plan kitchen/diner, perfect for entertaining. French doors open onto a newly landscaped rear garden, creating a wonderful space to relax and enjoy.

Upstairs, you'll discover three generously sized bedrooms, complemented by a modern family bathroom off the landing. Additional features include gas central heating and double glazing, ensuring year-round comfort and efficiency.

Situated in a prime location, this home is within easy walking distance of schools, shops, a supermarket, sporting facilities, and Carpenders Park Overground Station, providing direct links to Watford Junction and London Euston. OFFERED WITH NO CHAIN!

Council Tax band: C

Tenure: Freehold

EPC Energy Efficiency Rating: C

EPC Environmental Impact Rating: I



- BISF HOUSE
- 3 BEDROOM SEMI DETACHED
- RECENTLY REFURBISHED THROUGHOUT



Fairfield Estate Agents



Fairfield Estate Agents



Fairfield Estate Agents



Fairfield Estate Agents





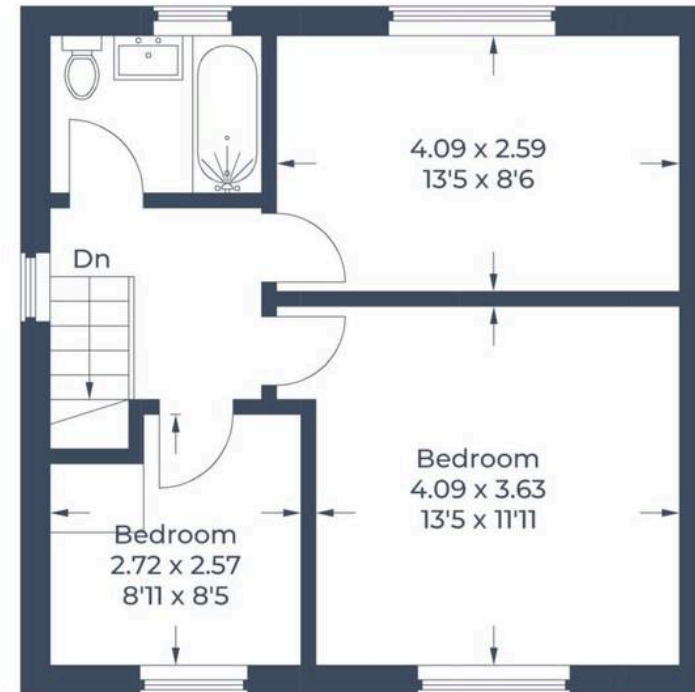


Fairfield Estate Agents

Approximate Gross Internal Area
Ground Floor = 44.1 sq m / 475 sq ft
First Floor = 41 sq m / 441 sq ft
Total = 85.1 sq m / 916 sq ft



Ground Floor



First Floor

Illustration for identification purposes only,
measurements are approximate, not to scale.

© CJ Property Marketing Produced for Fairfield Estates

