

# Fords.

SALES | LETTINGS | NEW HOMES



## 231 Chairborough Road, High Wycombe, HP12 3UL

A recently renovated two double bedroom ground floor apartment situated in a purpose-built apartment building on the north-west side of High Wycombe's Town Centre.

The accommodation consists of two double bedrooms, a bright and airy reception room, a stylish kitchen with appliances, modern family bathroom and ample storage.

RESERVE YOUR NEW HOME NOW! NB: The photos are of the Show Apartment.

- Recently Renovated - Ground Floor Apartment
- Blinds & Appliances Included
- Two Double Bedrooms
- Residents Parking
- Bright & Airy
- Modern Electric Heating
- New UPVC Double Glazed Windows
- Council Tax Band - B
- Available July 2026

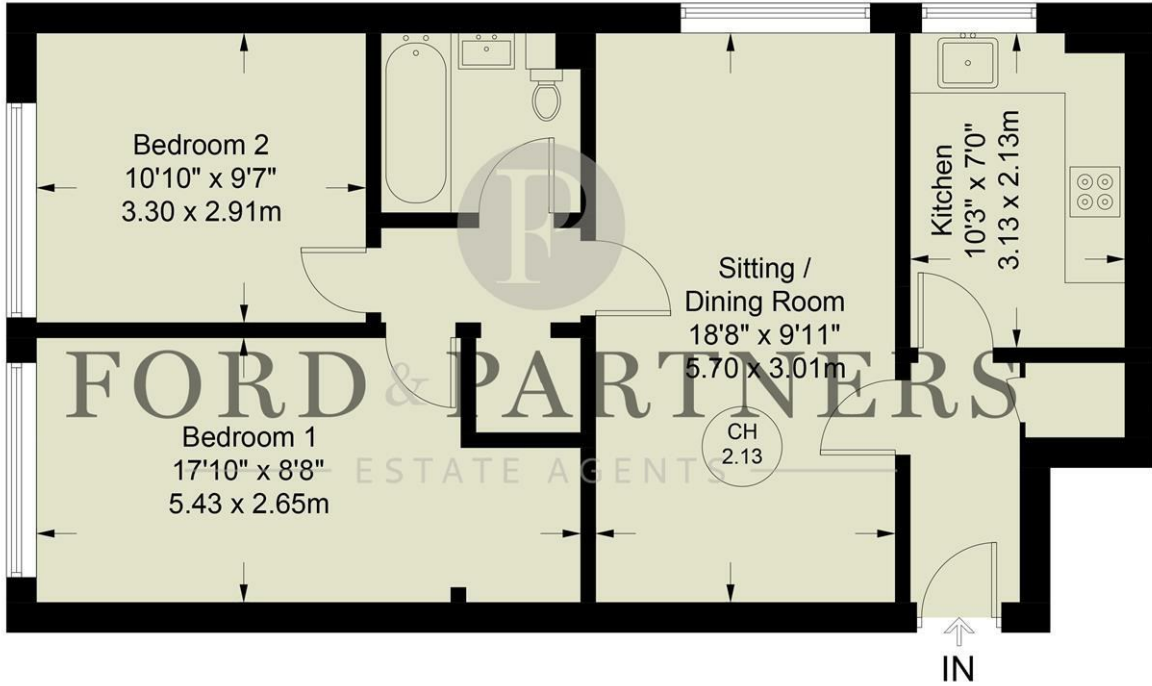
**£1,350 Per month**

# Chairborough Road, HP12 3UL

Approximate Gross Internal Area = 651 sq ft / 60.5 sq m



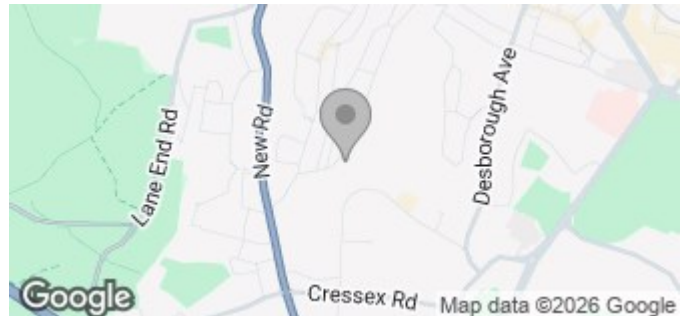
CH 2.13 = Ceiling Height



Floor Plan produced for Ford & Partners by Media Arcade ©.  
Illustration for identification purposes only. Window and door openings are approximate. Whilst every attempt is made to assure accuracy in the preparation of this plan, please check all dimensions, shapes and compass bearings before making any decisions reliant upon them.

Energy Efficiency Rating	
Current	Potential
Very energy efficient - lower running costs	
(92 plus) <b>A</b>	
(81-91) <b>B</b>	
(69-80) <b>C</b>	<b>79</b>
(55-68) <b>D</b>	
(39-54) <b>E</b>	<b>56</b>
(21-38) <b>F</b>	
(1-20) <b>G</b>	
Not energy efficient - higher running costs	
England & Wales	
EU Directive 2002/91/EC	

Environmental Impact (CO <sub>2</sub> ) Rating	
Current	Potential
Very environmentally friendly - lower CO <sub>2</sub> emissions	
(92 plus) <b>A</b>	
(81-91) <b>B</b>	
(69-80) <b>C</b>	
(55-68) <b>D</b>	
(39-54) <b>E</b>	
(21-38) <b>F</b>	
(1-20) <b>G</b>	
Not environmentally friendly - higher CO <sub>2</sub> emissions	
England & Wales	
EU Directive 2002/91/EC	



18 Crendon Street, High Wycombe, HP13 6LS

Tel: 01494 840 600 Email: sales@fordandpartners.com www.fordandpartners.com