



## Boston Road, W7

£325,000

This is a well presented one bedroom ground floor flat that comes with communal gardens and a garage.

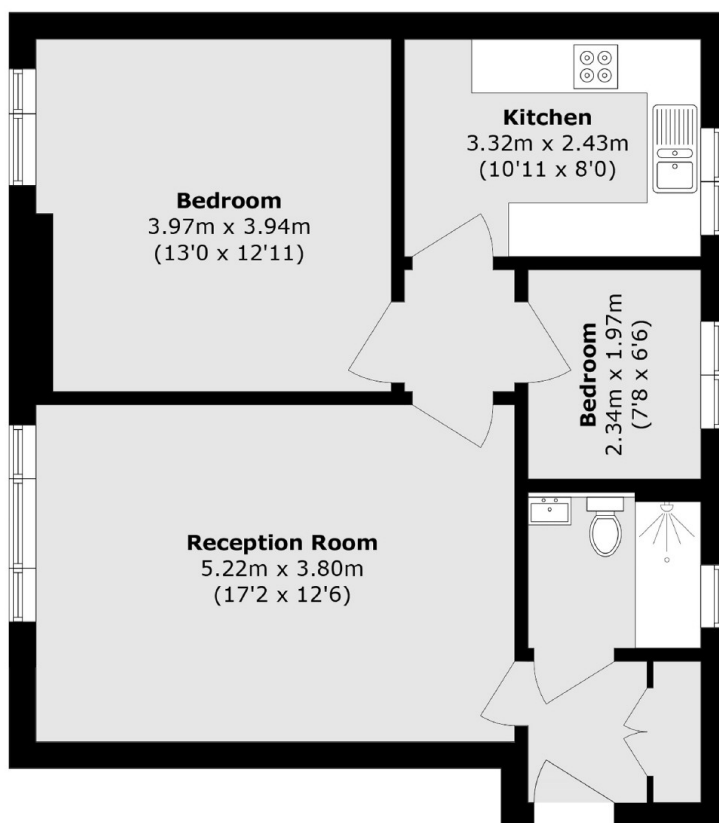
Wyndham Court is a small, private development just moments from Boston Manor Station (Piccadilly line), with Elthorne Park and local shops on your doorstep.

Offered with no onward chain, in turnkey condition and additional study room. Viewing is recommended.

### Features

- Two Bedrooms
- Ground Floor
- Excellent Condition
- Garage
- Adjacent to Tube
- No Onward Chain

Boston Road,  
London, W7



Total area (approx.): 59.7 sq. m (642.6 sq. ft)

**Dexters**

Northfields  
140 Northfield Avenue  
London  
W13 9SB  
Sales  
020 8545 8588

Energy Rating: C. We aim to make our particulars both accurate and reliable. However they are not guaranteed; nor do they form part of an offer or contract. If you require clarification on any points then please contact us, especially if you're traveling some distance to view. Please note that appliances and heating systems have not been tested and therefore no warranties can be given as to their good working order.

 **RICS** | Regulated  
Estate Agent  
and Letting Agent

[dexters.co.uk](http://dexters.co.uk)