



West Hampstead Central, West End Lane, NW6

Monthly Rental Of £3,450



800 Finchley Road, Hampstead Garden Suburb, London, NW11 7TJ

020 8458 5000

sales@litchfields.com

www.litchfields.com

Offices also in Highgate



 litchfields

Be the first to rent this striking, oversized two bedroom apartment, set on the 3rd floor of the brand new West Hampstead Central development, with lift, concierge (12 hours) & security. Use of Gymnasium and the communal roof gardens. Extending to approximately 894 sq ft (83 sq m), this apartment is one of the larger two bedroom layouts within the development, offering excellent space throughout. The accommodation comprises a bright open plan reception with sleek modern kitchen, two generous fitted double bedrooms and two luxury bathrooms, including an en-suite. A large private balcony provides valuable outdoor space, ideal for relaxing or entertaining. Finished to a high standard with wooden flooring, refined detailing and calm contemporary interiors. Perfectly located moments from West Hampstead's cafés, restaurants and outstanding transport links, including the Jubilee line, Overground and Thameslink. An exceptional opportunity for refined lifestyle living in one of North West London's most desirable neighbourhoods. Unfurnished. EPC – B.



 litchfields



2



2



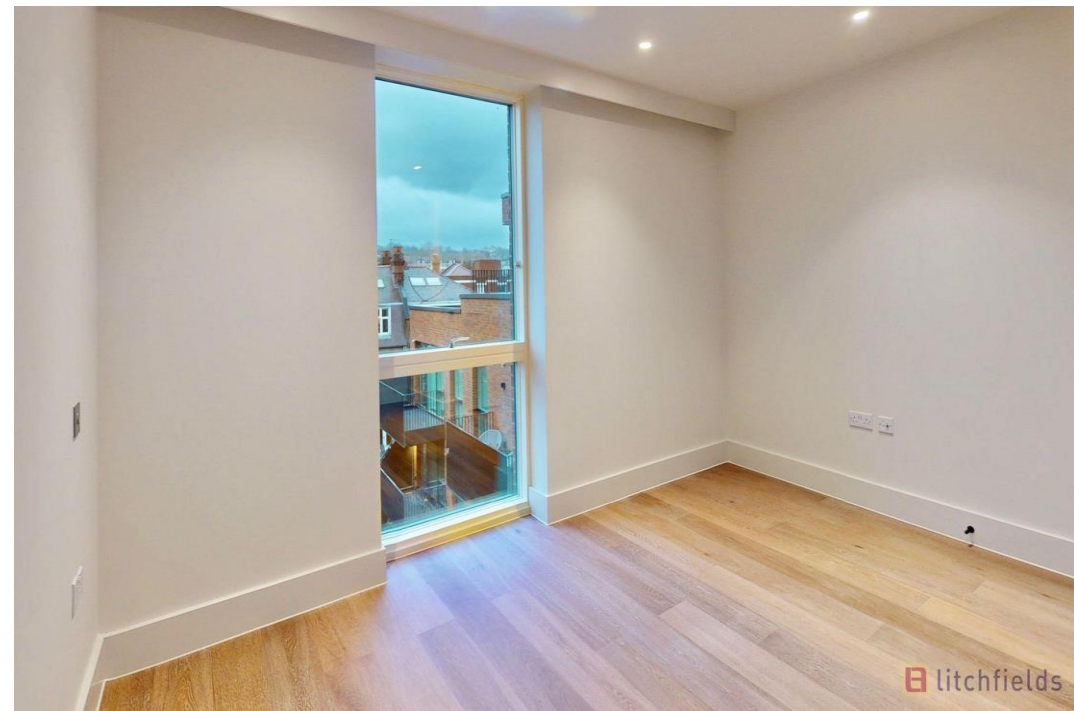
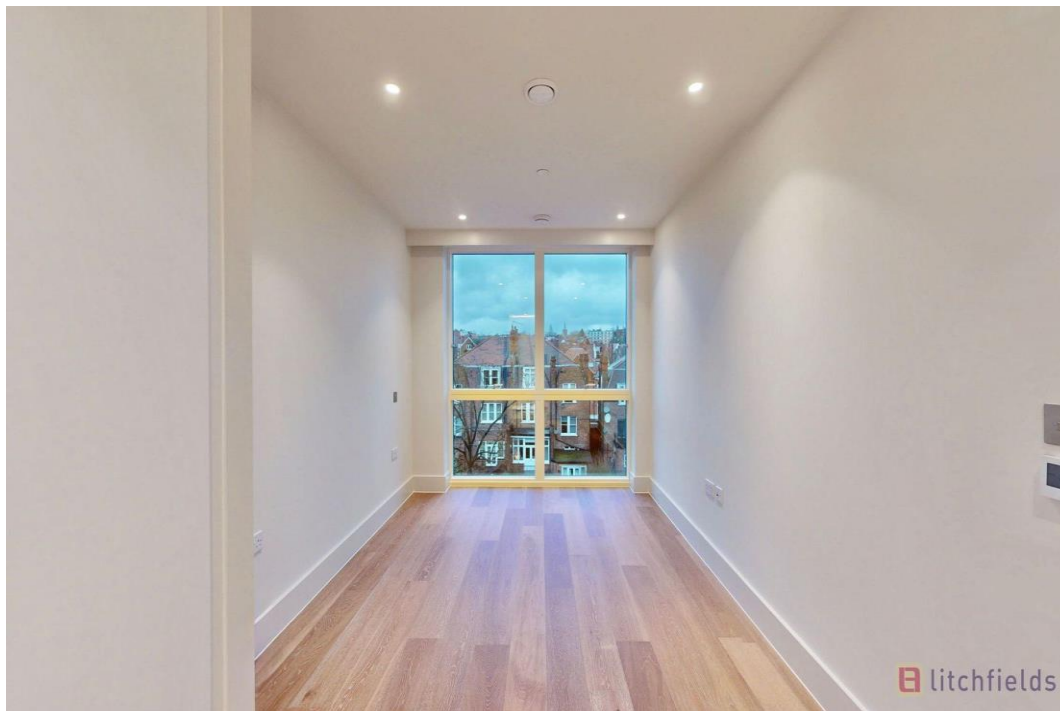
1

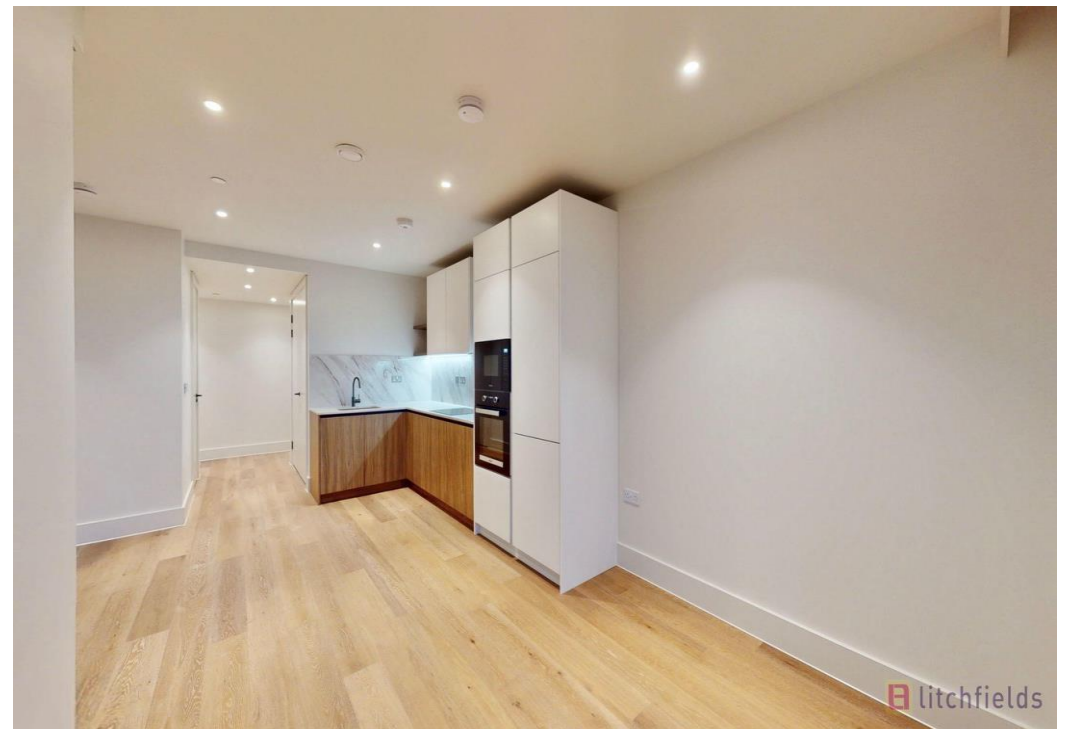
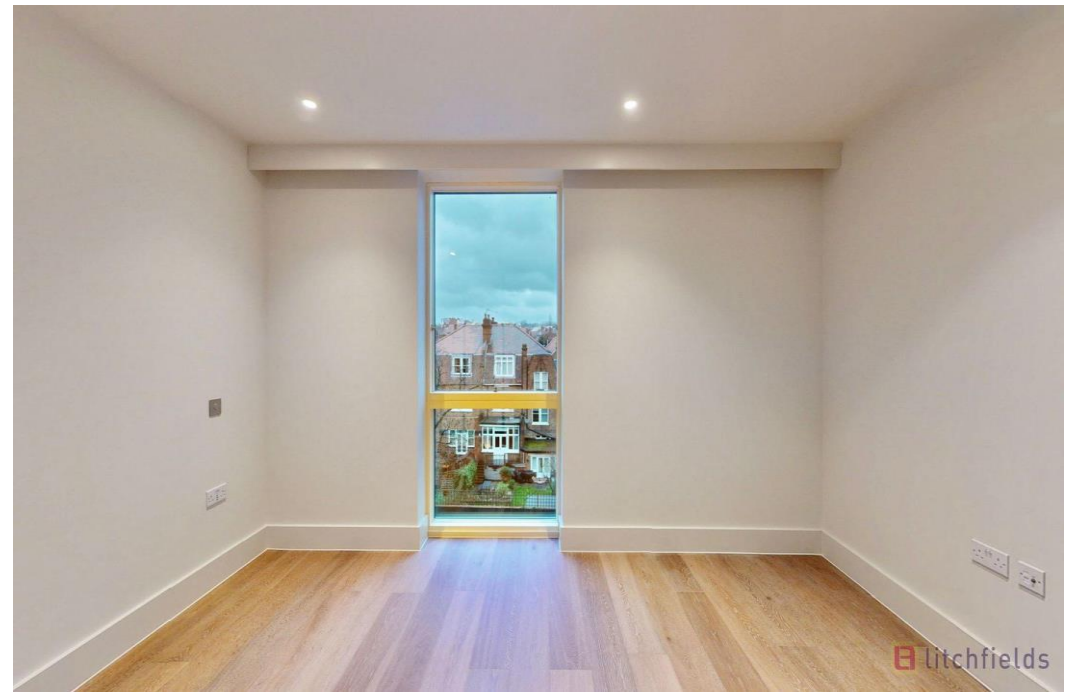
EPC

B

- Brand New Development in the heart of West Hampstead with Lift & Concierge (12 hours)
- Oversized Two Double Bedroom 3rd floor Apartment
- Two Luxurious Bathrooms (1 en-suite)
- Open Plan Reception
- Stunning Modern Kitchen
- Large Balcony
- Wood flooring
- Moments from West Hampstead's main restaurants, cafes & bars
- Jubilee line, Thameslink & Overground also moments away
- Gym & communal roof garden
- Unfurnished

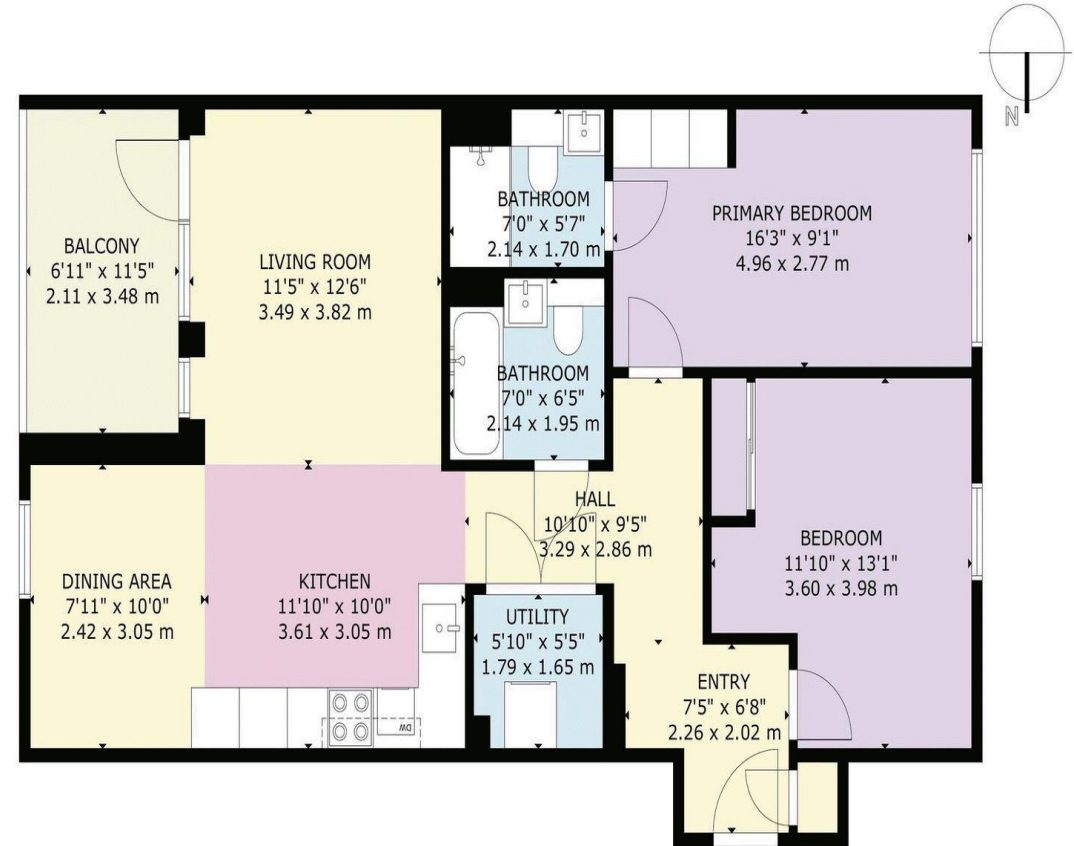








THIRD FLOOR



GROSS INTERNAL AREA
TOTAL: 83 m²/894 sq ft
THIRD FLOOR: 83 m²/894 sq ft
EXCLUDED AREAS: BALCONY: 7 m²/79 sq ft
SIZE AND DIMENSIONS ARE APPROXIMATE, ACTUAL MAY VARY.