



## Ronver Road, SE12

£350,000

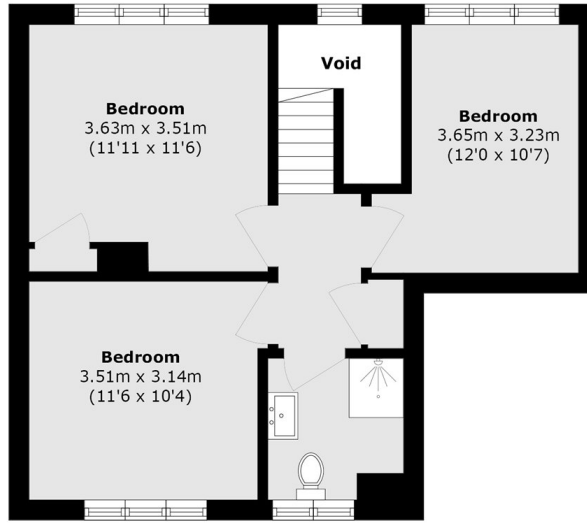
A spacious three-bedroom split-level flat situated on the popular Ronver Road in Lee, offering well-balanced accommodation across two floors. Requiring modernisation throughout, the property presents an excellent opportunity for buyers looking to create a home to their own specification or for investors seeking a value-add project. The flat benefits from a generous reception room, separate kitchen, three well-proportioned bedrooms and good storage space. Conveniently located within easy reach of Lee Station, local shops, parks and amenities.

Ronver road is 0.6 miles away from Lee station, Offering direct links into London Bridge, Waterloo East, Cannon Street & Charing Cross. Changes are possible at Lewisham for the DLR and New Cross for the East London line. Within the immediate area there is a variety of local shops. You are also within walking distance to Northbrook Park. Further into Lee there are some locally renowned restaurants and

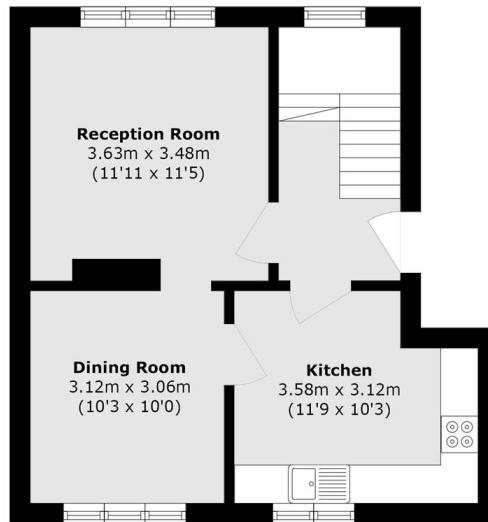
### Features

- Three Bedrooms
- Split Level
- In Need Of Modernisation
- Easy Reach of Lee Station
- Close to Local Amenities
- Popular Location

Ronver Road,  
London, SE12



**Third Floor**



**Second Floor**

Total area (approx.): 85.6 sq. m (921.3 sq. ft)  
(Excluding Void)