

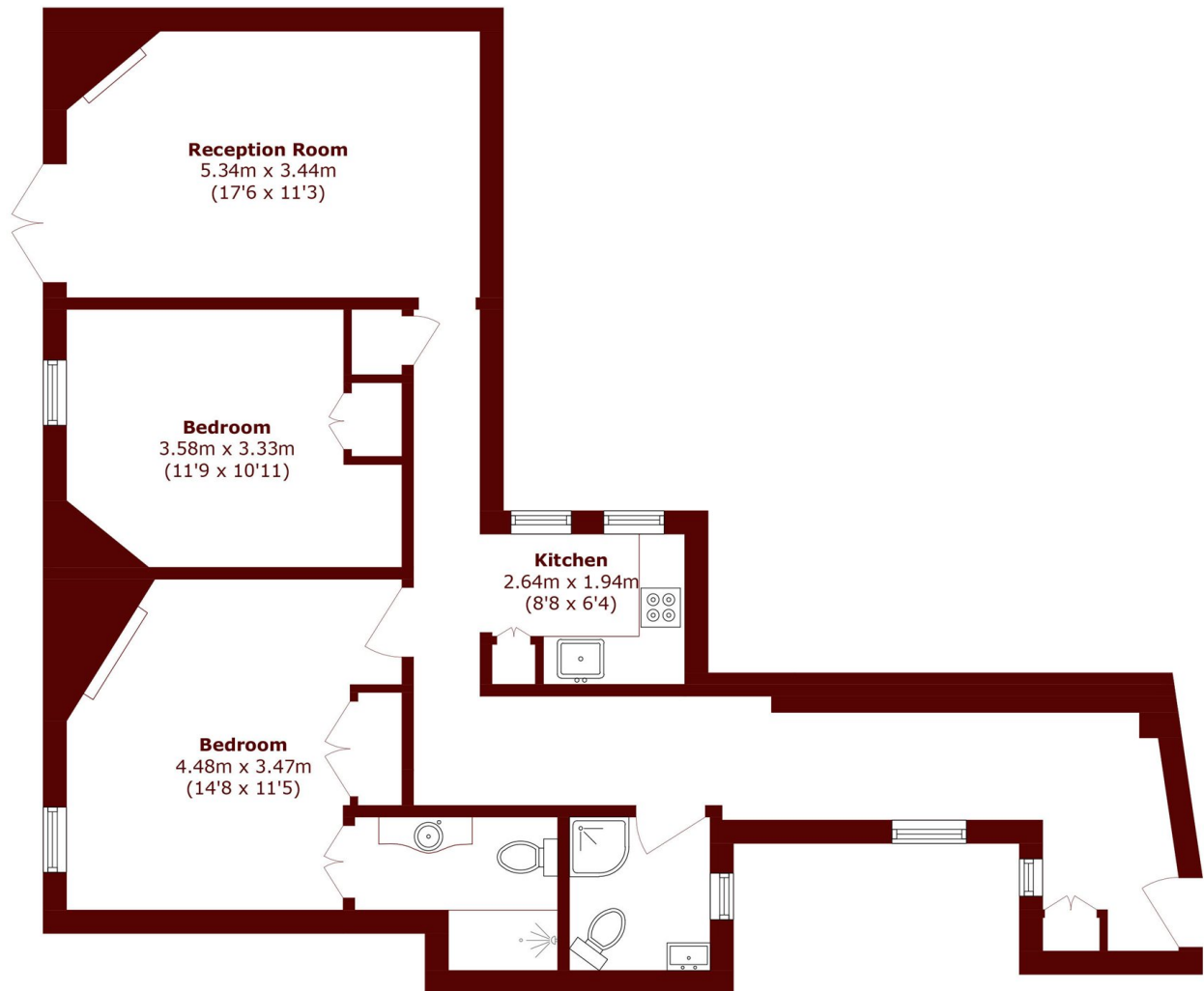


West End Lane, NW6

£3,250 pcm



- Two Double Bedroom
- Two Bathroom
- High Ceilings
- Mansion Block
- Communal Garden
- Heart of West Hampstead



Total area (approx.): 88.0 sq. m (947.2 sq. ft)

Marsh & Parsons Queens Park

56 Salusbury Road, London,
NW6 6NN
020 7624 4513