



BRITISH
PROPERTY
AWARDS

2021
2024



GOLD WINNER

ESTATE AGENT
IN BARNET



Mantlestates.com



estatestates.com



£739,950

TENURE : FREEHOLD

Farm Close, High Barnet, EN5

Bedrooms : 3

Bathrooms : 3

Reception Rooms : 2

3 BEDROOM HOUSE

PLUS ONE BEDROOM SELF-CONTAINED ANNEX to side

OVERLOOKING FIELDS

QUIET LOCATION

EASY ACCESS TO BARNET GENERAL HOSPITAL

Mantlestates

2A Church Hill Road, East Barnet, EN4 8TB

office@mantlestates.com | 0208 275 1555

Website: <https://mantlestates.com/>



Situated in High Barnet, this End of Terrace property at Farm Close presents a unique opportunity with its three bedrooms, two bathrooms, and two reception rooms. The house includes a self-contained one-bedroom granny annex, perfect for accommodating guests or family members seeking privacy. The property is positioned in a quiet location, offering picturesque views overlooking fields, enhancing the tranquil living experience.

The main house features a spacious layout with a modern Kitchen/Diner equipped with essential appliances, including a gas hob and oven, Lounge & Bedroom. The kitchen's design allows for efficient use of space, making meal preparation a breeze. The reception rooms provide ample space for relaxation and entertainment, with large windows allowing natural light to flood the interiors.

The bedrooms are well-sized, providing comfortable living spaces for family members. The bathrooms are modern, with quality fittings ensuring convenience and comfort. Both properties also boasts a garden, offering a private outdoor space for leisure and recreation. This area is perfect for enjoying the peaceful surroundings and engaging in outdoor activities.

The self-contained granny annex includes a bedroom, bathroom, and a small kitchenette, providing a fully independent living space. This addition is ideal for extended family living or as a guest suite, offering privacy and convenience.

The location in Barnet provides access to local amenities, schools, and transport links, making it a practical choice for families and professionals alike.

Overall, this end terrace property combines modern living with a peaceful setting, making it a desirable choice for those seeking a home in Barnet.

ENTRANCE: 6' 02" x 2' 10" (1.88m x 0.86m)

Double-glazed front door, laminated flooring.

BATHROOM: 6' 07" x 5' 02" (2.01m x 1.57m)

panel bath, low-level flush water closet, wash hand basin, tiled flooring & walls.

FRONT RECEPTION: 10' 07" x 10' 02" (3.23m x 3.10m)

Double-glazed window to front aspect, laminated flooring.

HALL: 5' 09" x 3' 06" (1.75m x 1.07m)

Under-stair storage cupboard.

KITCHEN/DINER: 17' 00" x 05' 09" (5.18m x 1.75m)

Double-glazed doors & windows to rear aspect, wall and floor standing kitchen units, tiled flooring.

LANDING: 9' 04" x 3' 00" (2.84m x 0.91m)

FRONT BEDROOM: 10' 00" x 10' 03" (3.05m x 3.12m)

Double-glazed window to front aspect.

REAR BEDROOM: 7' 06" x 8' 03" (2.29m x 2.51m)

Double-glazed window to the rear aspect.

REAR BEDROOM: 8' 00" x 7' 04" (2.44m x 2.24m)

Double-glazed window to the rear aspect.

GARDEN: 44' 00" x 17' 08" (13.41m x 5.38m)

ANNEX - LOUNGE/DINER: 21' 08" x 9' 02" (6.60m x 2.79m)

Double-glazed door to side aspect, double-glazed window to front & rear aspect, kitchen units.

ANNEX - WATER CLOSET: 5' 08" x 2' 05" (1.73m x 0.74m)

Low level flush water closet, wash hand basin.

ANNEX - LANDING: 11' 03" x 2' 09" (3.43m x 0.84m)

ANNEX - BATHROOM: 8' 10" x 4' 07" (2.69m x 1.40m)

Low-level flush water closet, walk-in shower, wash hand basin, tiled flooring.

ANNEX - BEDROOM: 10' 00" x 9' 00" (3.05m x 2.74m)

Double glazed window to rear aspect.

ANNEX - REAR GARDEN: 55' x 25' (16.76m x 7.62m)

ANNEX - SIDE GARDEN: 36' x 26' (10.97m x 7.92m)

Mantlestates

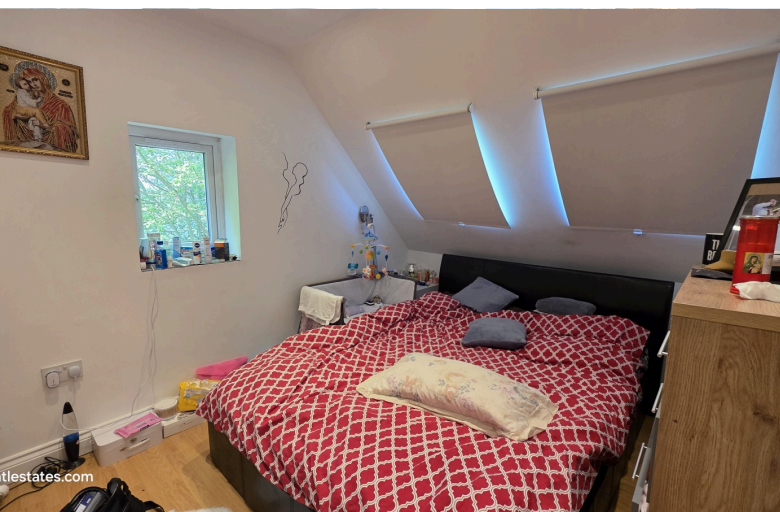
2A Church Hill Road, East Barnet, EN4 8TB
office@mantlestates.com | 0208 275 1555

Website: <https://mantlestates.com/>



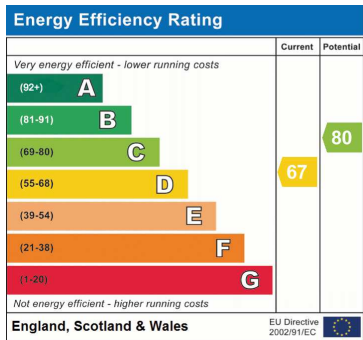
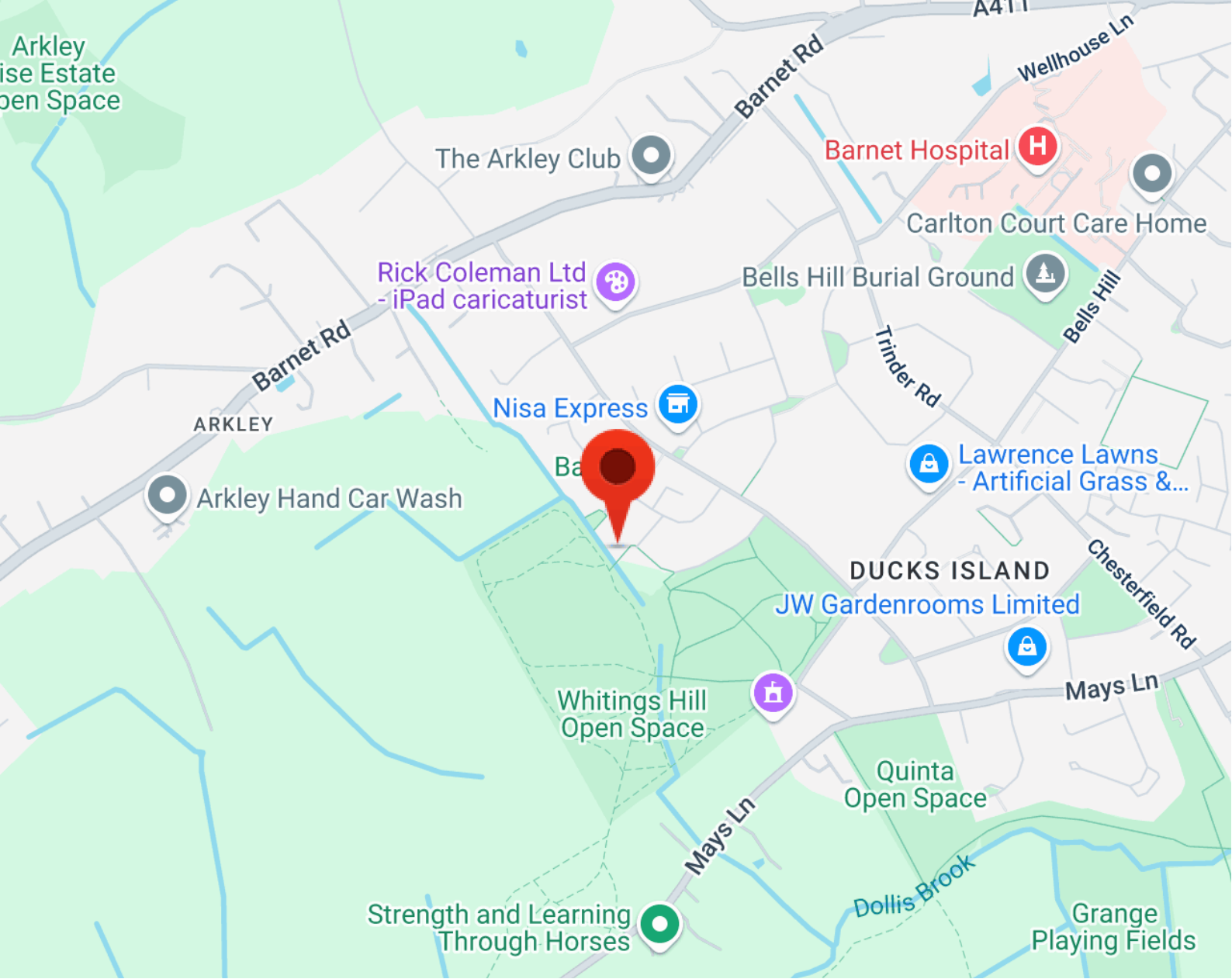


com



Mantlestates
2A Church Hill Road, East Barnet, EN4 8TB
office@mantlestates.com | 0208 275 1555
Website: <https://mantlestates.com/>





Address: Farm Close, High Barnet, EN5



