



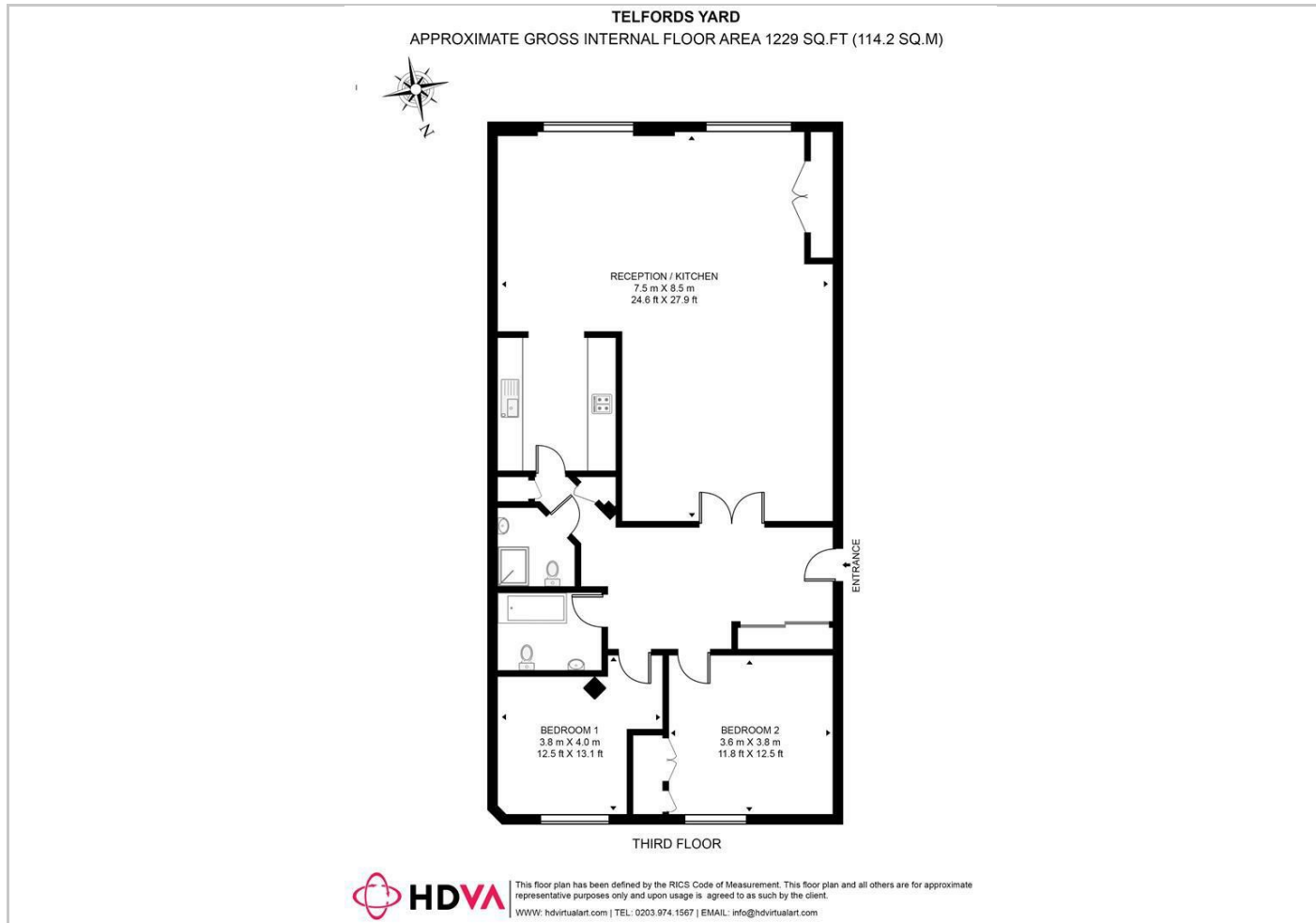
Telfords Yard London, E1W 2BQ
Offer In Excess Of £850,000

FOR SALE

Gray's
RESIDENTIAL

- Highly sought-after, 2-bed apartment
- Third floor
- Fully equipped kitchen with integrated appliances
- Allocated underground parking

- Within the popular Telfords Yard warehouse conversion
- Generous open-plan reception room
- 24-hour concierge service
- Excellent transport links



A highly sought-after two-bedroom apartment in the popular Telfords Yard warehouse conversion in West Wapping, London. This 1,299 sq. ft apartment is set on the third floor and features high ceilings, and exposed brick walls, perfectly combining industrial character with contemporary living.

The apartment offers a generous reception room ideal for living, dining, and home office space, seamlessly connected to a fully equipped kitchen with integrated appliances, creating a perfect entertaining area. There are two spacious double bedrooms, one shower room, and an additional family bathroom

Additional benefits include 24-hour concierge service, allocated underground parking, and access to secure communal spaces.

Located in West Wapping, this apartment is well-connected to London transport links, including Tower Hill, Tower Gateway, Aldgate, and Aldgate East stations, offering easy access to the City and Canary Wharf. Enjoy nearby amenities with St Katharine Docks' restaurants, cafes, and bars, plus Waitrose supermarket just 0.3 miles away.

This 2-bedroom apartment for sale in West Wapping is ideal for professionals, investors, or families looking for a spacious, stylish, and well-located London home.