



16 Western Close Penton Park Chertsey Surrey KT16 8QB

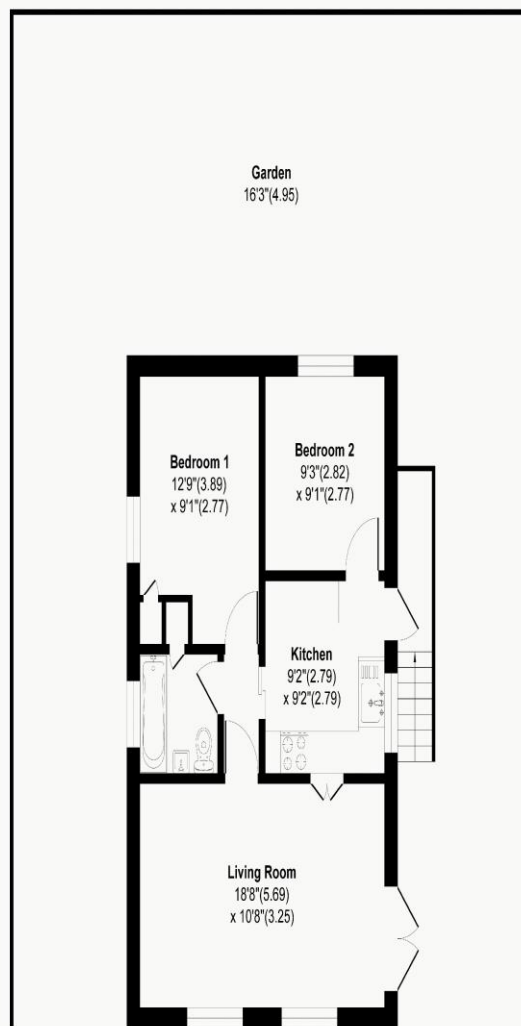
Guide Price £100,000



Western Close, Penton Park, Chertsey, KT16

Approximate Area = 562 sq ft / 52.1 sq m

For Identification Only - Not to scale



Ground Floor

Floor plan Produced in accordance with RICS Property Measurement 2nd Edition, Incorporating International Property Measurement Standards (IPMS2 - Residential). Produced for James Neave Estate Agents.



For sale with no onward chain, this two-bedroom detached park home is situated on a well-positioned plot within the popular Penton Park development in Chertsey. Exclusively for the over 50's, this property is offered to the market as a project, requiring full renovation throughout to bring it up to modern standards. The home occupies an excellent position within the park and benefits from good parking facilities, including access to a large communal car park on-site. Penton Park is a pet-friendly community, typically limited to one dog or one cat per household, and is well-regarded for its active social club and strong resident community. Located on Mixnams Lane, the site is ideally placed near the River Thames and Penton Hook Marina, offering a quiet environment for retirement or semi-retirement. While the setting is peaceful, the property remains within easy reach of the local shops and amenities in Thorpe, Laleham, Staines, and Chertsey.



AGENTS NOTES: These details do not constitute any part of an offer or contract. In issuing them we do not have any authority to give any warranty or representation whatsoever in respect of this property. These details are provided without any responsibility on our part or the part of the vendors. No statements in these details are to be relied upon as representations of fact and purchasers should satisfy themselves by inspection or otherwise as to the accuracy of the statements contained therein.

Equipment: We have not tested the equipment or central heating system mentioned in these particulars and purchasers are advised to satisfy themselves as to their working order and condition.

Measurements: Great care is taken when measuring but measurements should not be relied upon for ordering carpets, equipment, etc.